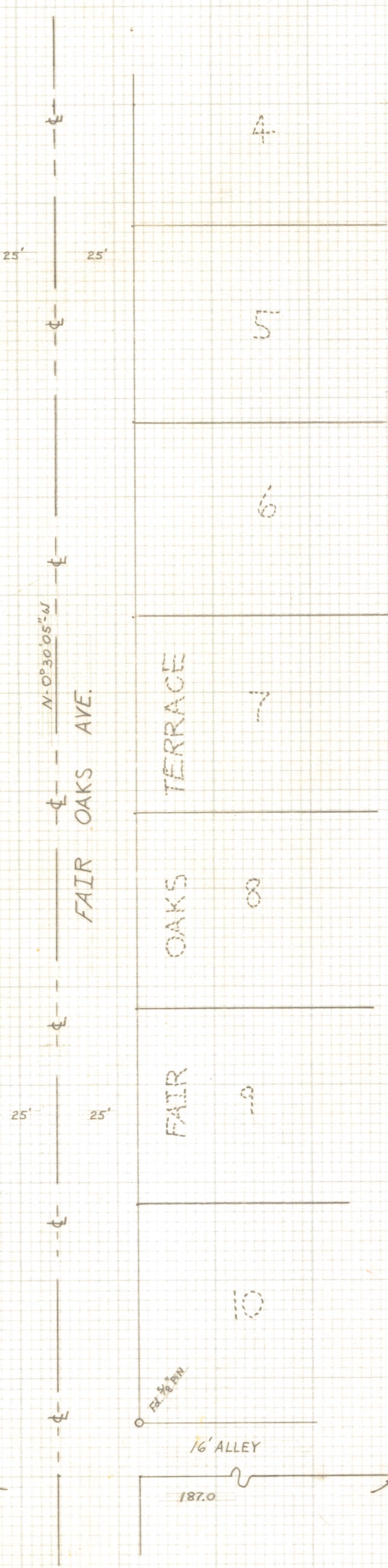
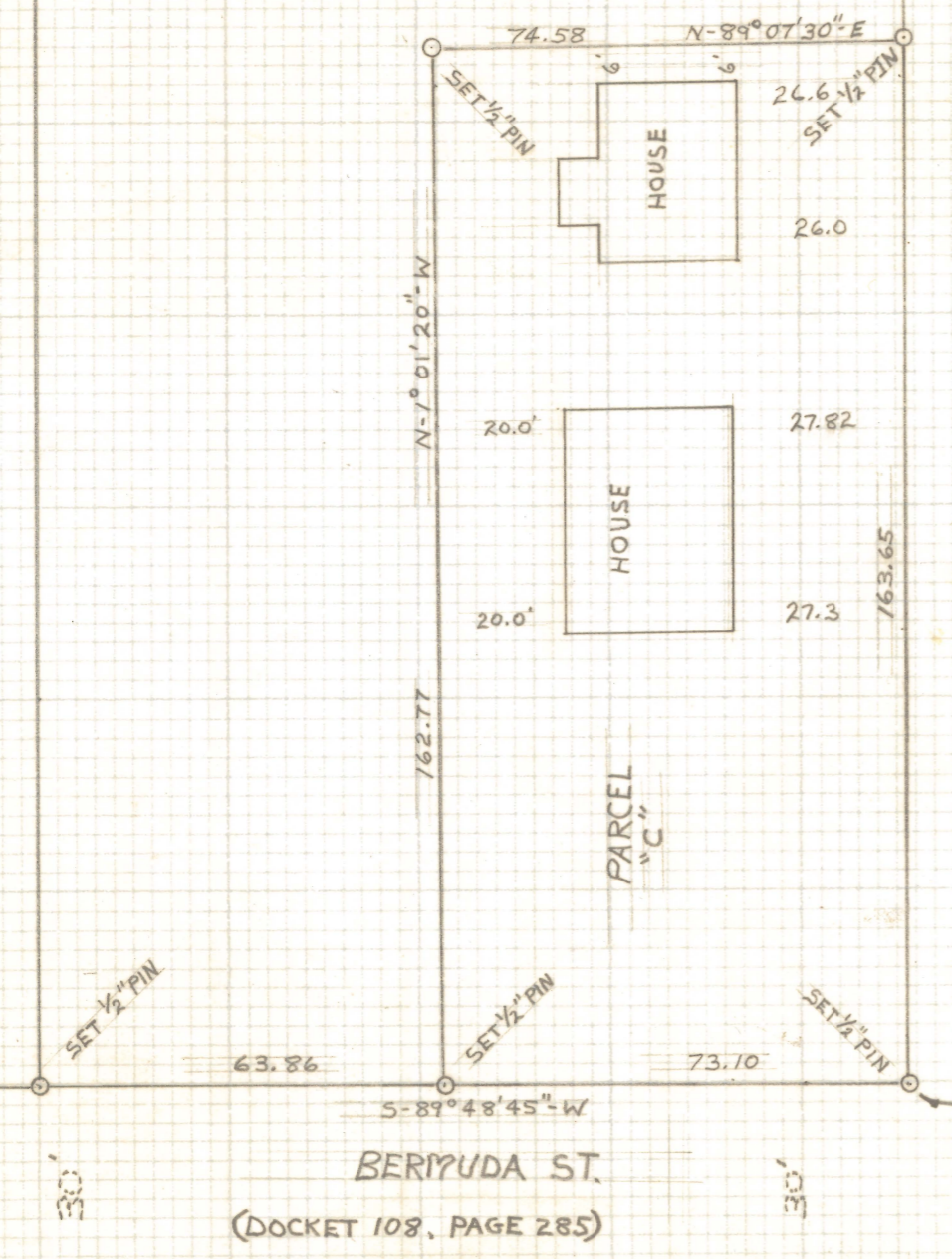
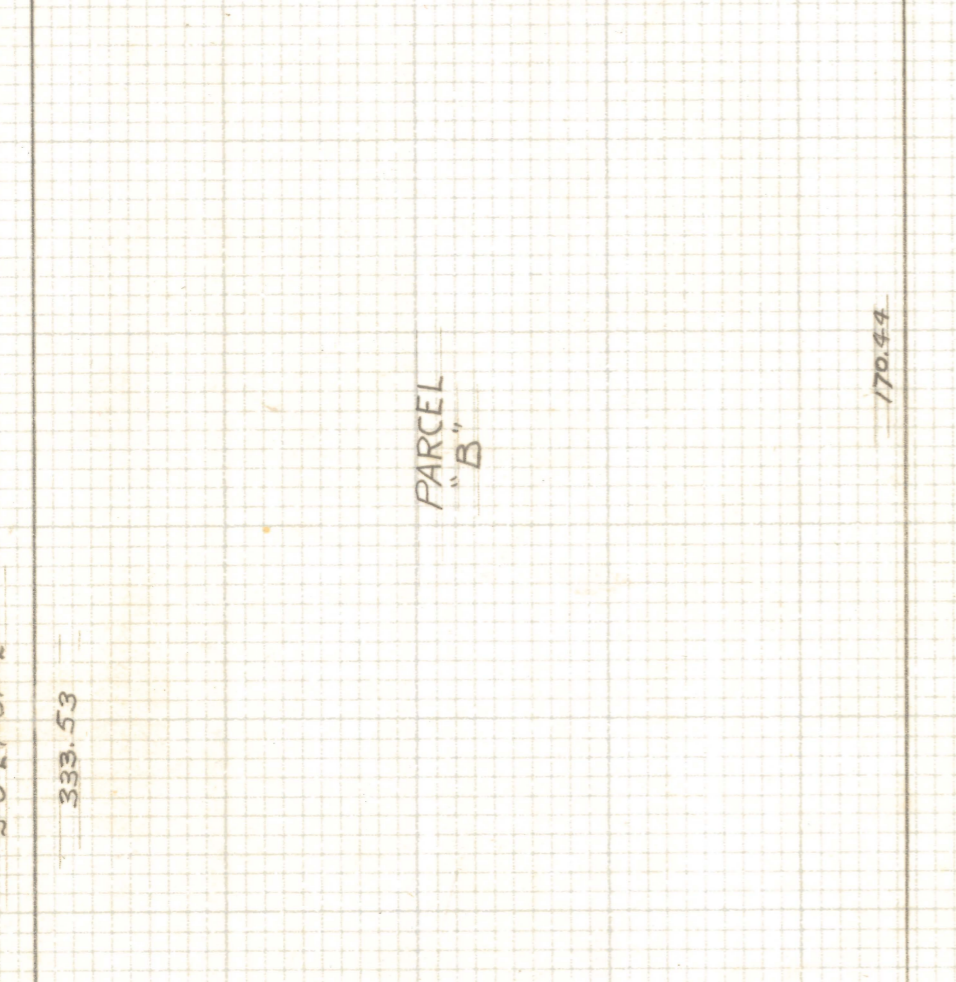
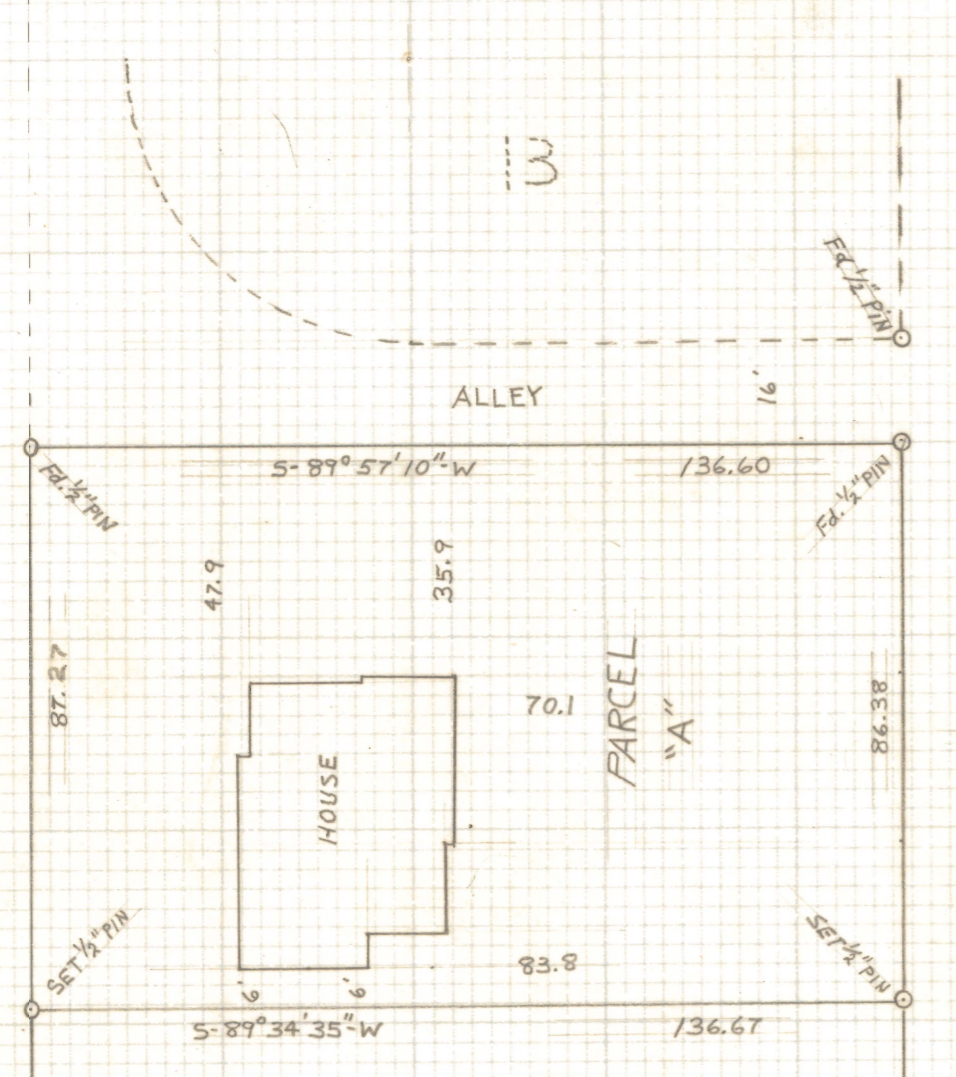
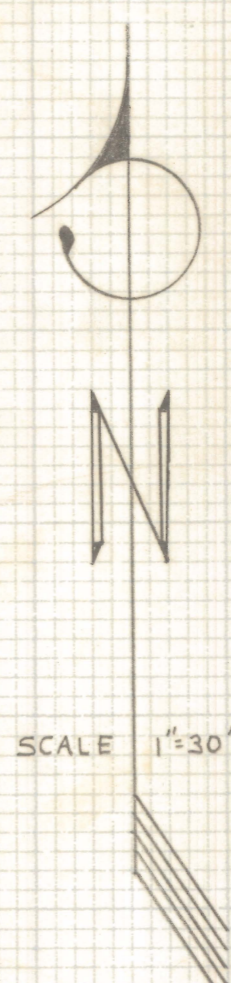


DISCLAIMER:

This unrecorded Record of Survey was donated to the City of Tucson. The City of Tucson provides this data for your personal use "as is." Additionally, the City of Tucson provides this information with the understanding that it is not guaranteed to be accurate, correct or complete and conclusions drawn from such information are the responsibility of the user.



RESULTS OF SURVEY:
 OF LOT 2 OF CATILINA FARMS ADD., PIMA COUNTY, ARIZ., AS SHOWN BY MAP ON FILE IN BOOK 4 OF MAPS & PLATS AT Pg. 36 EXCEPTING THEREFROM; THAT PORTION THEREOF INCLUDED IN "FAIR OAKS TERRACE", A SUBDIVISION RECORDED IN BOOK 21 OF MAPS & PLATS AT PAGE 4, IN THE OFFICE OF THE PIMA COUNTY RECORDER, PIMA COUNTY, ARIZONA. MARKED NOT A PART

AREAS:
 PARCEL "A" = 11,863 FT² ±
 PARCEL "B" = 33,621 FT² ±
 PARCEL "C" = 12,050 FT² ±
 TOTAL = 57,534 FT² ±



ROBERT F. MELLEN
 REGISTERED LAND SURVEYOR
 TUCSON ARIZONA
 JOB# 76-112
 SEPT. 1976

B.K.

Z-2020-593