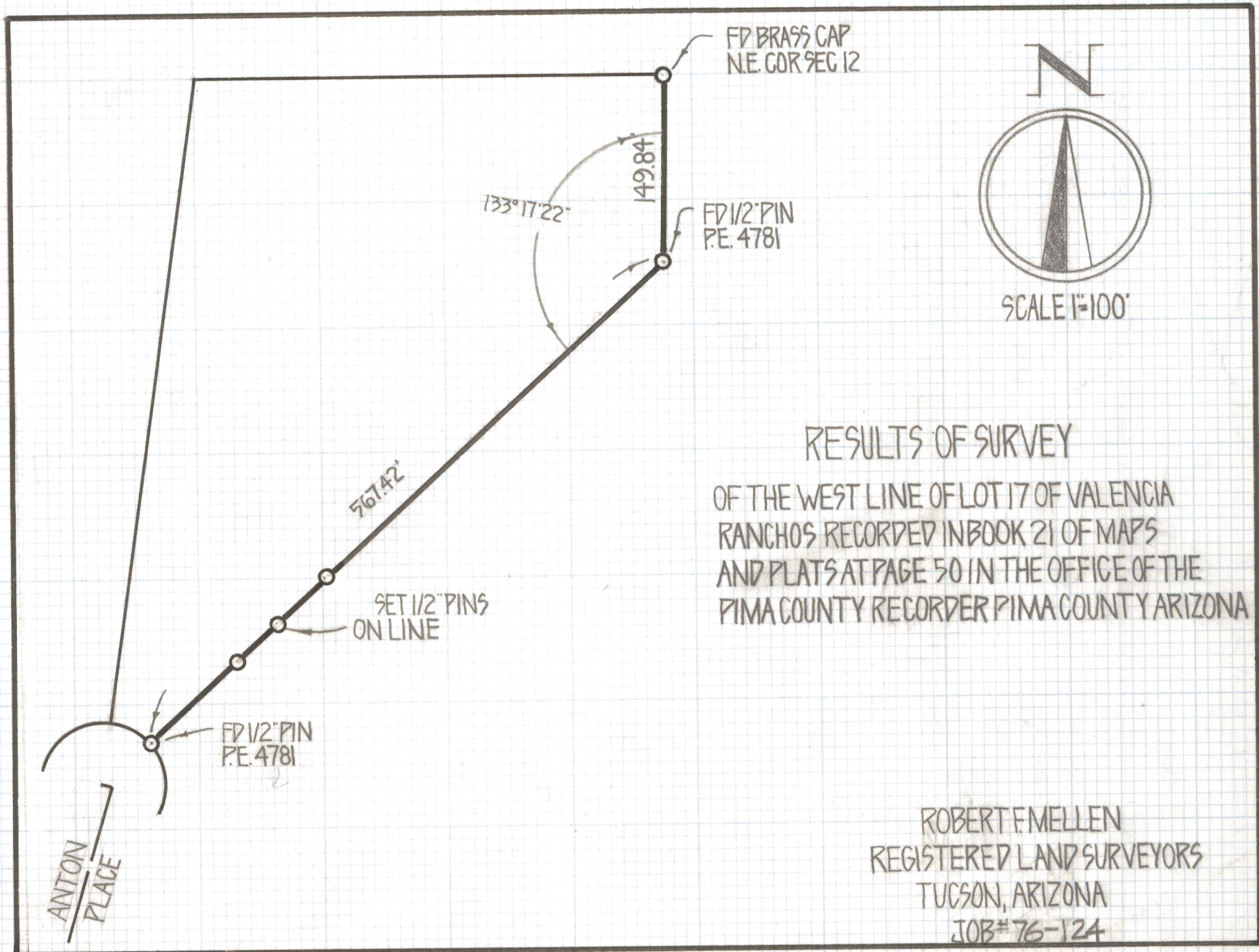
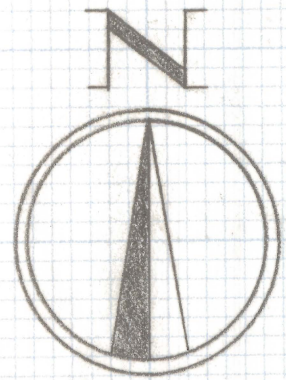


DISCLAIMER:

This unrecorded Record of Survey was donated to the City of Tucson. The City of Tucson provides this data for your personal use "as is." Additionally, the City of Tucson provides this information with the understanding that it is not guaranteed to be accurate, correct or complete and conclusions drawn from such information are the responsibility of the user.



FD BRASS CAP
N.E. COR SEC 12



SCALE 1"=100'

133° 17' 22"

149.84'

FD 1/2" PIN
P.E. 4781

567.42'

SET 1/2" PINS
ON LINE

FD 1/2" PIN
P.E. 4781

ANTON
PLACE

RESULTS OF SURVEY

OF THE WEST LINE OF LOT 17 OF VALENCIA
RANCHOS RECORDED IN BOOK 21 OF MAPS
AND PLATS AT PAGE 50 IN THE OFFICE OF THE
PIMA COUNTY RECORDER PIMA COUNTY ARIZONA

ROBERT F. MELLEN
REGISTERED LAND SURVEYORS
TUCSON, ARIZONA
JOB # 76-124

Z-2020-603