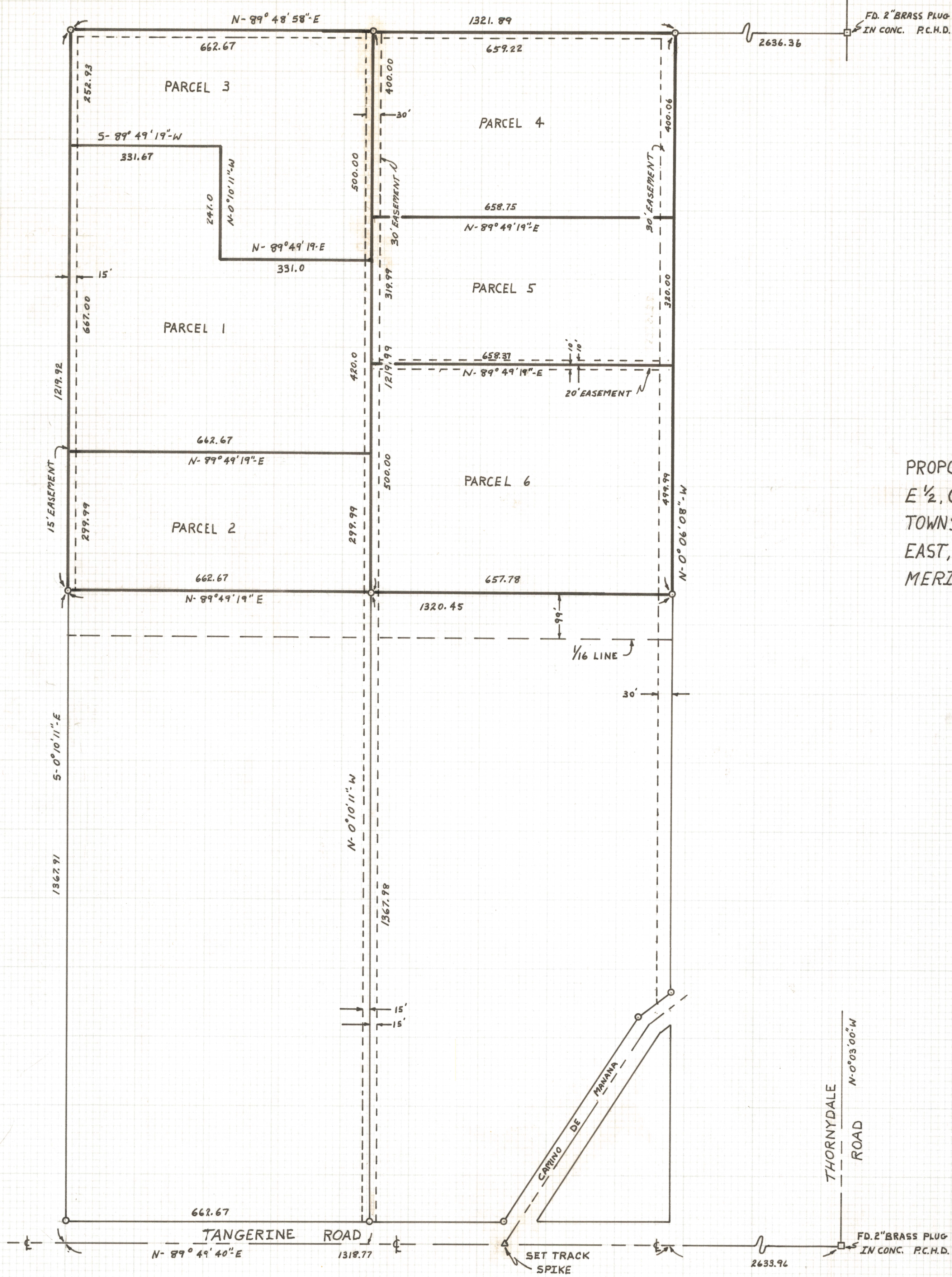


DISCLAIMER:

This unrecorded Record of Survey was donated to the City of Tucson. The City of Tucson provides this data for your personal use "as is." Additionally, the City of Tucson provides this information with the understanding that it is not guaranteed to be accurate, correct or complete and conclusions drawn from such information are the responsibility of the user.



SCALE 1"=150'

RESULTS OF A
 PROPOSED DIVISION OF A PORTION OF
 E 1/2, OF S.W. 1/4 OF SECTION THIRTY-ONE,
 TOWNSHIP ELEVEN SOUTH, OF RANGE THIRTEEN
 EAST, GILA AND SALT RIVER BASE AND
 MERIDIAN, PIMA COUNTY, ARIZONA.

NOTES:

- (1) □ SURVEY MONUMENT.
- (2) ○ SET 5/8" PIN.
- (3) BASIS OF BEARINGS - G.L.O. PLAT 1921 SHOWING EAST SECTION 31 AS N-0°03'-W.
- (4) ALL DISTANCES TO ϕ ALL ROADS UNLESS NOTED.
- (5) THIS MAP DOES NOT REPRESENT A SURVEY.

ROBERT F. MELLEN
 REGISTERED LAND SURVEYOR
 TUCSON, ARIZONA
 JOB # 76-135
 NOVEMBER 1976

SEE JOB # 75-97

B.K.

S-2020-607

5