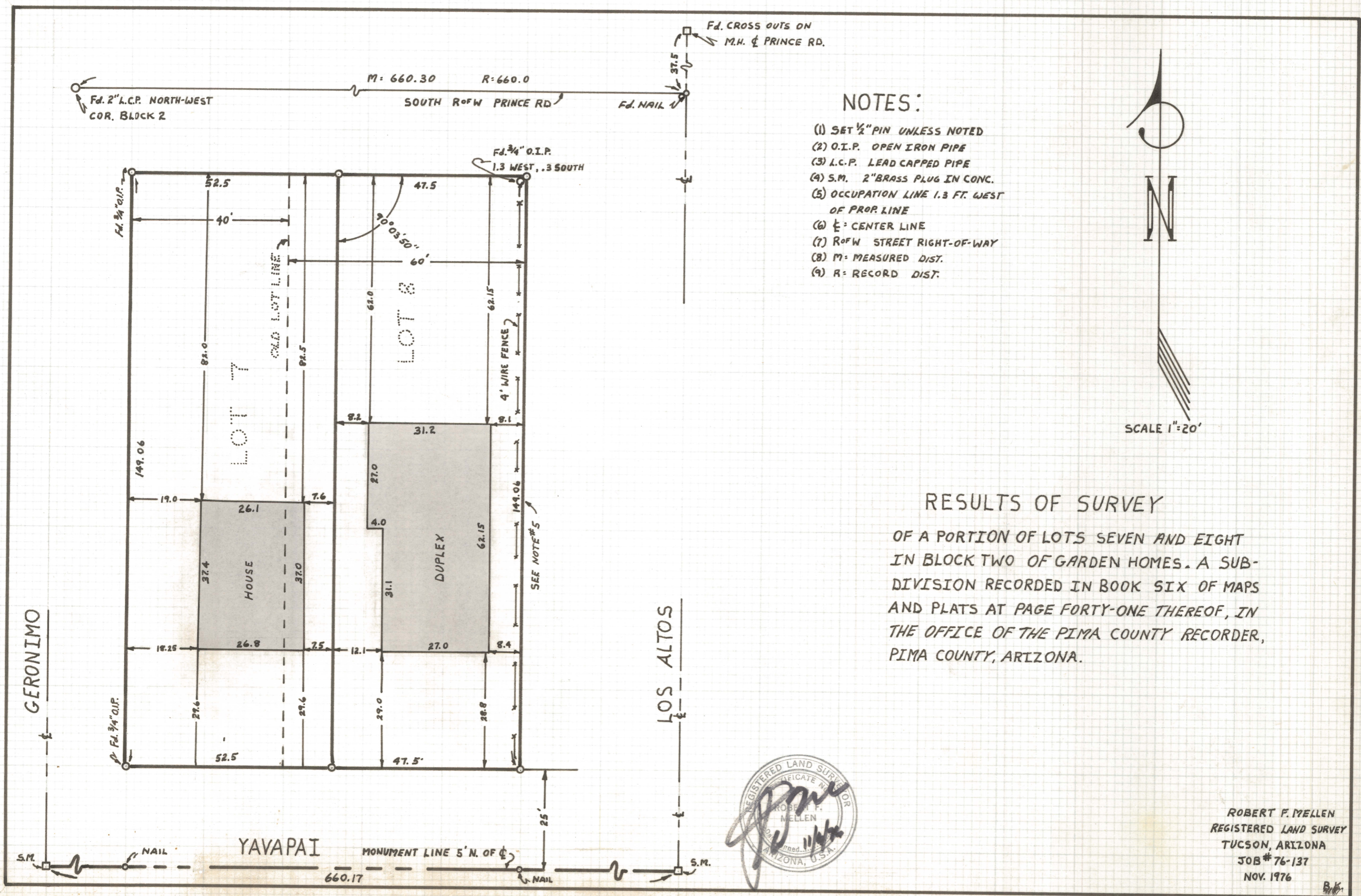
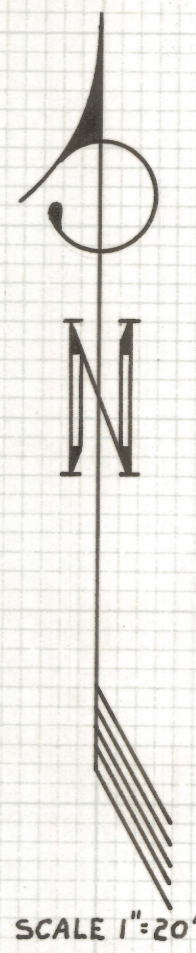


# **DISCLAIMER:**

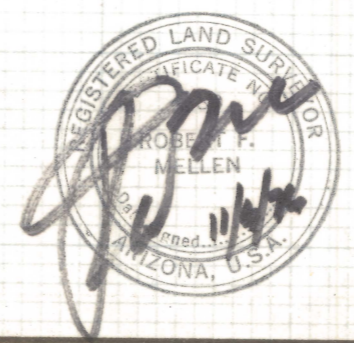
**This unrecorded Record of Survey was donated to the City of Tucson. The City of Tucson provides this data for your personal use "as is." Additionally, the City of Tucson provides this information with the understanding that it is not guaranteed to be accurate, correct or complete and conclusions drawn from such information are the responsibility of the user.**



- NOTES:**
- (1) SET 1/2" PIN UNLESS NOTED
  - (2) O.I.P. OPEN IRON PIPE
  - (3) L.C.P. LEAD CAPPED PIPE
  - (4) S.M. 2" BRASS PLUG IN CONC.
  - (5) OCCUPATION LINE 1.3 FT. WEST OF PROP. LINE
  - (6) CL = CENTER LINE
  - (7) R.O.F.W. STREET RIGHT-OF-WAY
  - (8) M = MEASURED DIST.
  - (9) R = RECORD DIST.



**RESULTS OF SURVEY**  
 OF A PORTION OF LOTS SEVEN AND EIGHT  
 IN BLOCK TWO OF GARDEN HOMES. A SUB-  
 DIVISION RECORDED IN BOOK SIX OF MAPS  
 AND PLATS AT PAGE FORTY-ONE THEREOF, IN  
 THE OFFICE OF THE PIMA COUNTY RECORDER,  
 PIMA COUNTY, ARIZONA.



ROBERT F. MELLEN  
 REGISTERED LAND SURVEY  
 TUCSON, ARIZONA  
 JOB # 76-137  
 NOV. 1976

Z-2020-608