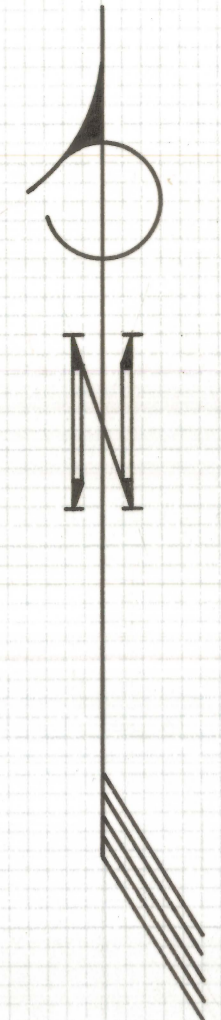


DISCLAIMER:

This unrecorded Record of Survey was donated to the City of Tucson. The City of Tucson provides this data for your personal use "as is." Additionally, the City of Tucson provides this information with the understanding that it is not guaranteed to be accurate, correct or complete and conclusions drawn from such information are the responsibility of the user.



SCALE 1" = 40'



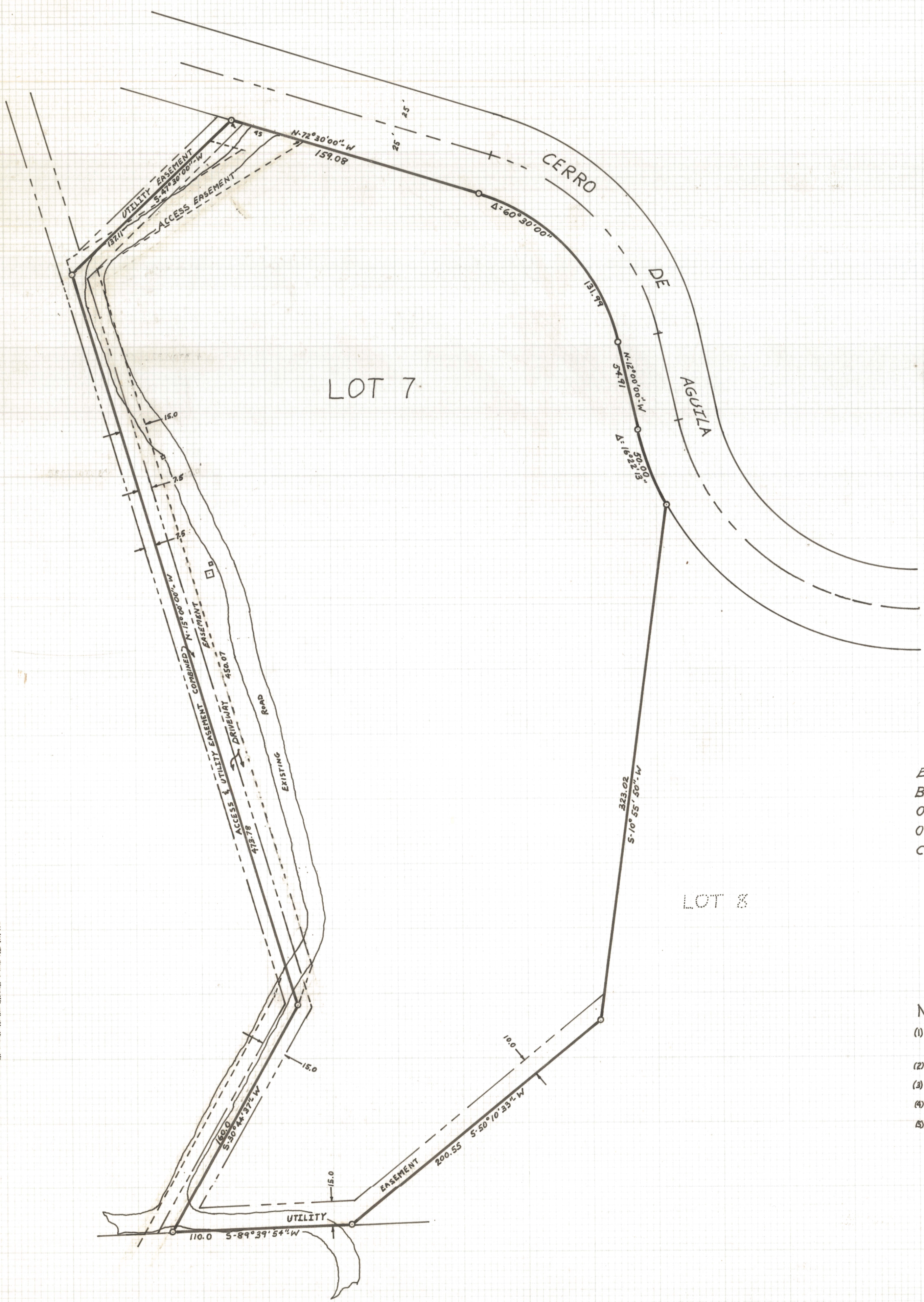
MAP SHOWING

EASEMENTS ON LOT 7 OF CERRO DE AGUILA, BEING A SUBDIVISION RECORDED IN BOOK 21 OF MAPS & PLATS AT PAGE 44 THEREOF, IN THE OFFICE OF THE PIMA COUNTY RECORDER, PIMA COUNTY, ARIZONA

NOTES:

- (1) THIS MAP DOES NOT REPRESENT A SURVEY
- (2) - - - - - ACCESS EASEMENT
- (3) - - - - - UTILITY EASEMENT
- (4) □ TRANSFORMER PAD & TRANSFORMER
- (5) □ TELEPHONE RISER

UNSUBDIVIDED



ROBERT F. MELLEN
 REGISTERED LAND SURVEYOR
 TUCSON, ARIZONA
 JOB # 76-139
 NOVEMBER 1976

B.K.