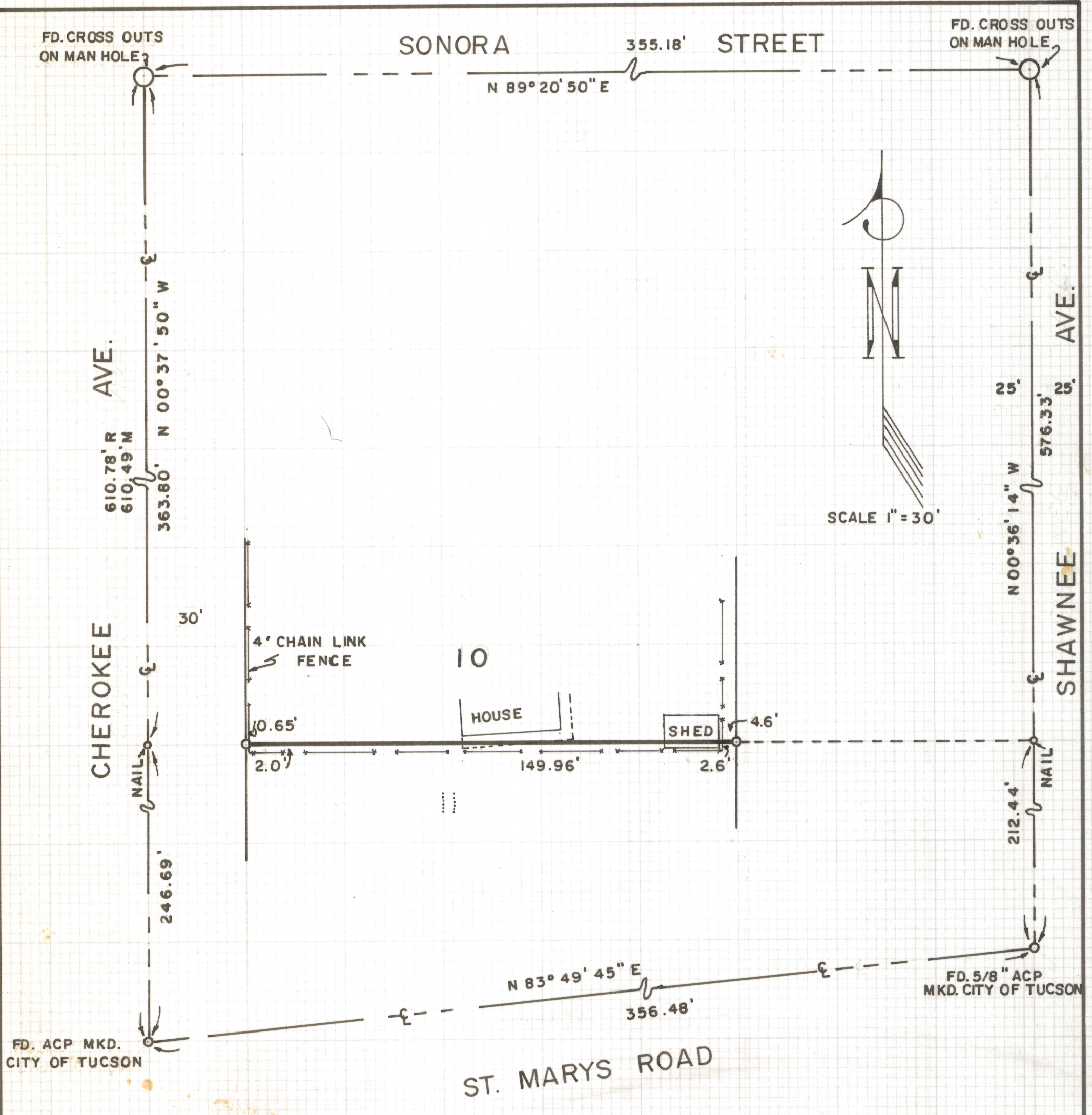


DISCLAIMER:

This unrecorded Record of Survey was donated to the City of Tucson. The City of Tucson provides this data for your personal use "as is." Additionally, the City of Tucson provides this information with the understanding that it is not guaranteed to be accurate, correct or complete and conclusions drawn from such information are the responsibility of the user.



RESULTS OF SURVEY

OF THE SOUTH LINE OF LOT 10 OF EL RIO PARK, BEING A SUBDIVISION RECORDED IN BOOK 6 OF MAPS & PLATS AT PAGE 17 THEREOF IN THE OFFICE OF THE PIMA COUNTY RECORDER, PIMA COUNTY, ARIZONA

NOTES

- (1) INDICATES 1/2" STEEL PIN SET MKD. L.S. 4680 UNLESS OTHERWISE NOTED
- (2) ACP - ALUMINUM CAPPED PIN MKD. CITY OF TUCSON



ROBERT F. MELLEN
REGISTERED LAND SURVEYOR
TUCSON, ARIZONA

JOB # 76-141
NOVEMBER 1976

BK

Z-2020-610