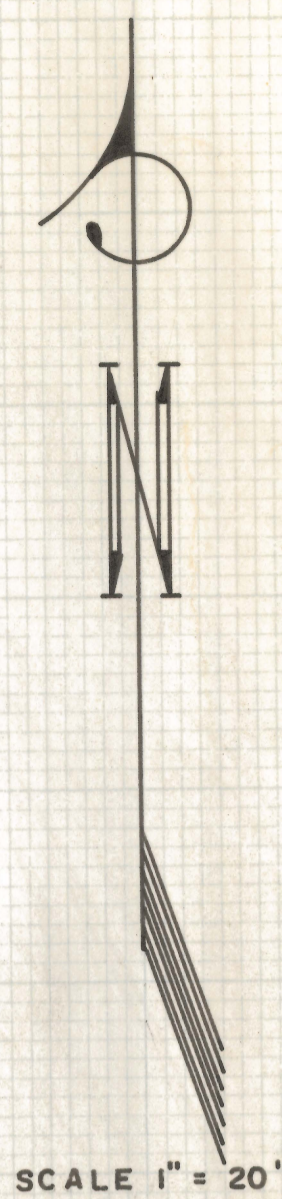
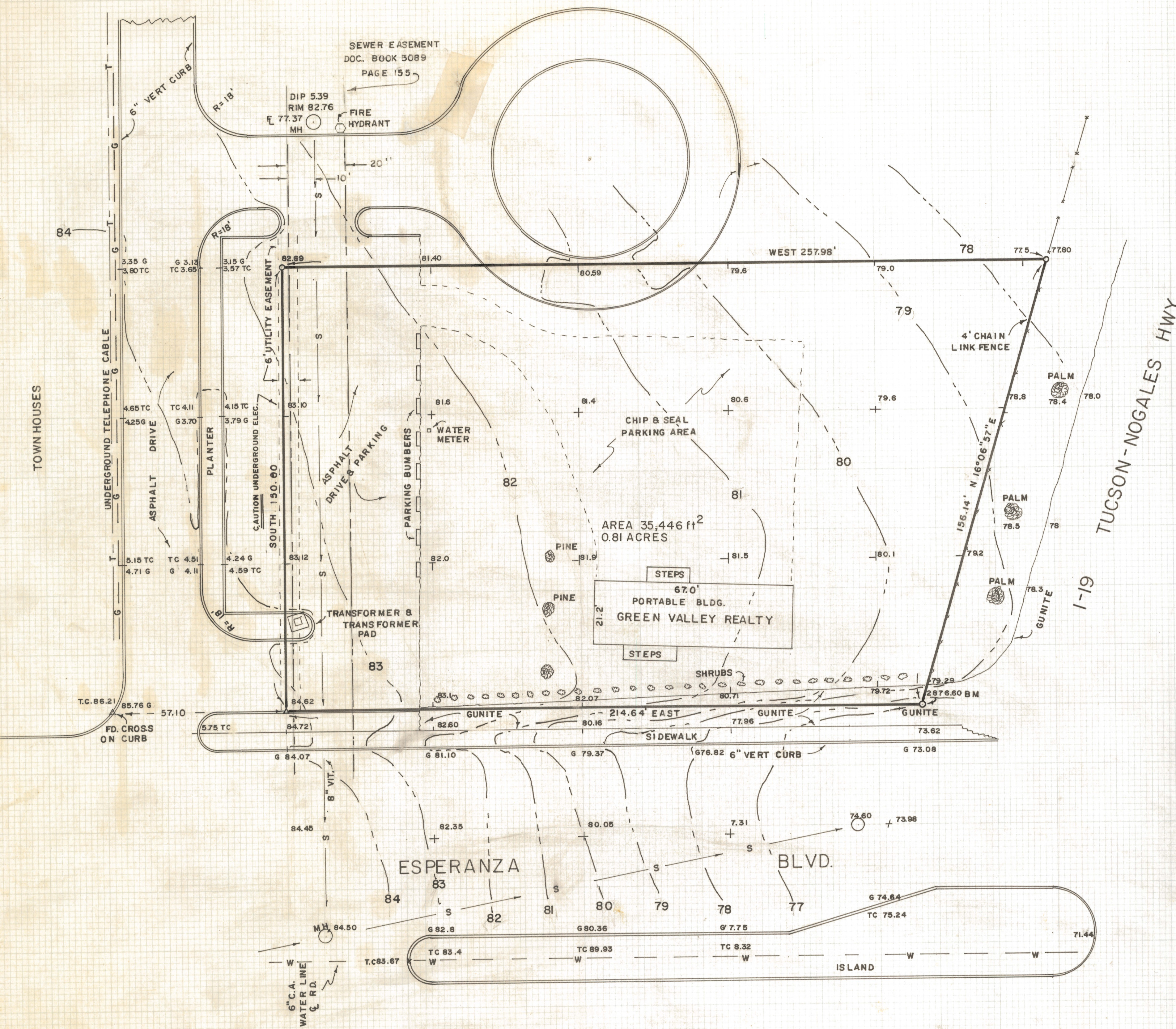


DISCLAIMER:

This unrecorded Record of Survey was donated to the City of Tucson. The City of Tucson provides this data for your personal use "as is." Additionally, the City of Tucson provides this information with the understanding that it is not guaranteed to be accurate, correct or complete and conclusions drawn from such information are the responsibility of the user.



RESULTS OF SURVEY

OF A PORTION OF LOT 1, BLOCK 3 OF TUCSON GREEN VALLEY UNIT NO. 1, BEING A SUBDIVISION ON RECORD IN BOOK 16 OF MAPS AND PLATS AT PAGE 76 THEREOF, IN THE OFFICE OF THE PIMA COUNTY RECORDER, PIMA COUNTY, ARIZONA

NOTES

- (1) SOUTHEAST PROPERTY CORNER IS A 3" BRASS PLUG IN CONCRETE MARKED HIGHWAY RIGHT OF WAY
- (2) SOUTHWEST PROPERTY CORNER IS A "FOUND CROSS" ON CURB
- (3) Δ INDICATES 1/2" STEEL PIN SET MKD. L.S. 4680
- (4) -S- INDICATES SEWER AND DIRECTION OF FLOW
- (5) WE WERE UNABLE TO DETERMINE THE SIZE & LOCATION OF LINE WHICH SERVES THE FIRE HYDRANT
- (6) -G- INDICATES 2" STEEL GAS LINE
- (7) BM SOUTHEAST PROP. COR. ELEV. 2876.60
- (8) -W-W- INDICATES 6" CEMENT ASBESTOS LINE

ROBERT F. MELLEN
 REGISTERED LAND SURVEYOR
 TUCSON, ARIZONA
 JOB # 76-142
 NOVEMBER 1976