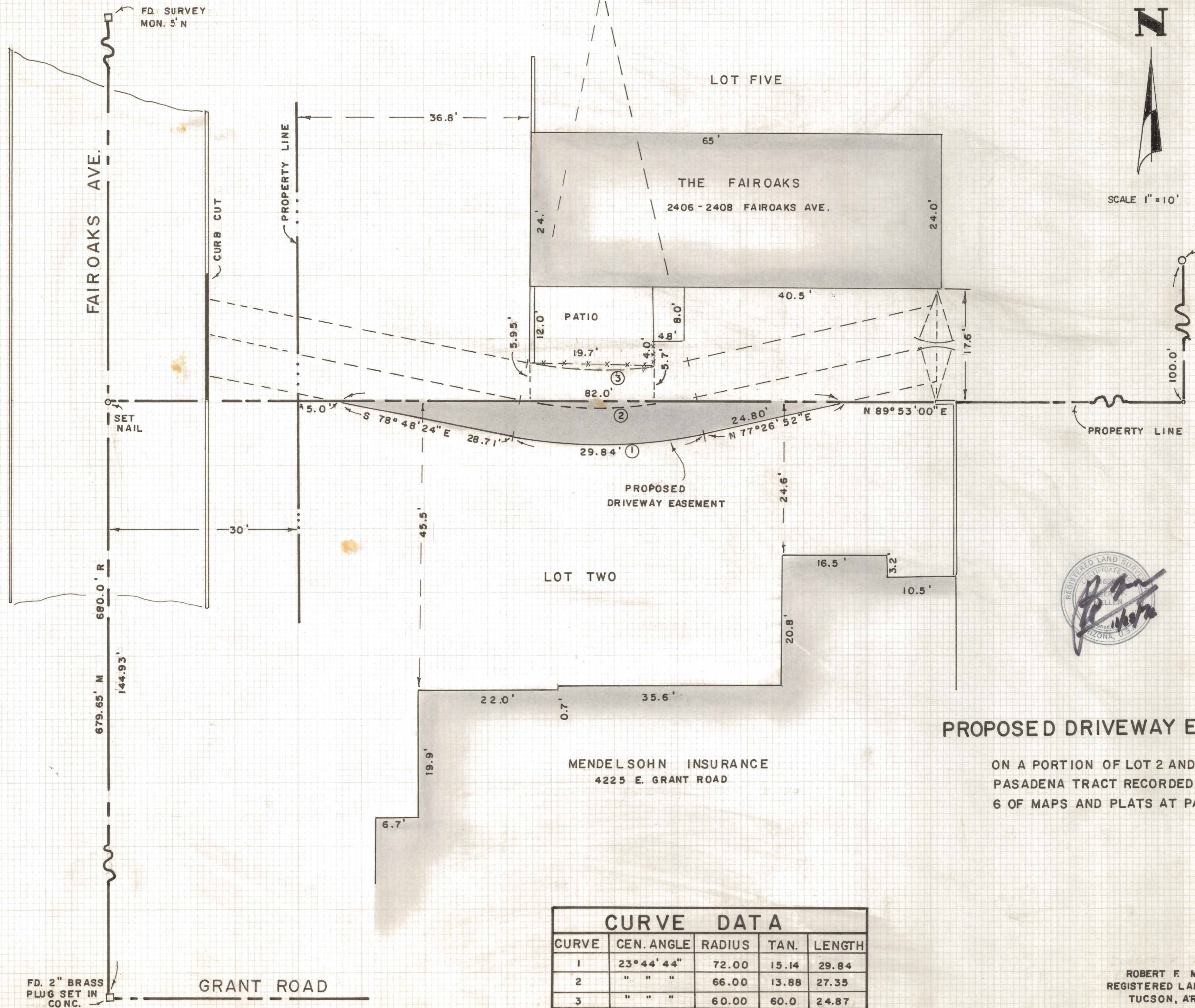


DISCLAIMER:

This unrecorded Record of Survey was donated to the City of Tucson. The City of Tucson provides this data for your personal use "as is." Additionally, the City of Tucson provides this information with the understanding that it is not guaranteed to be accurate, correct or complete and conclusions drawn from such information are the responsibility of the user.



N

SCALE 1" = 10'

FD. 5/8" STEEL
PIN MKD.
PE 5178



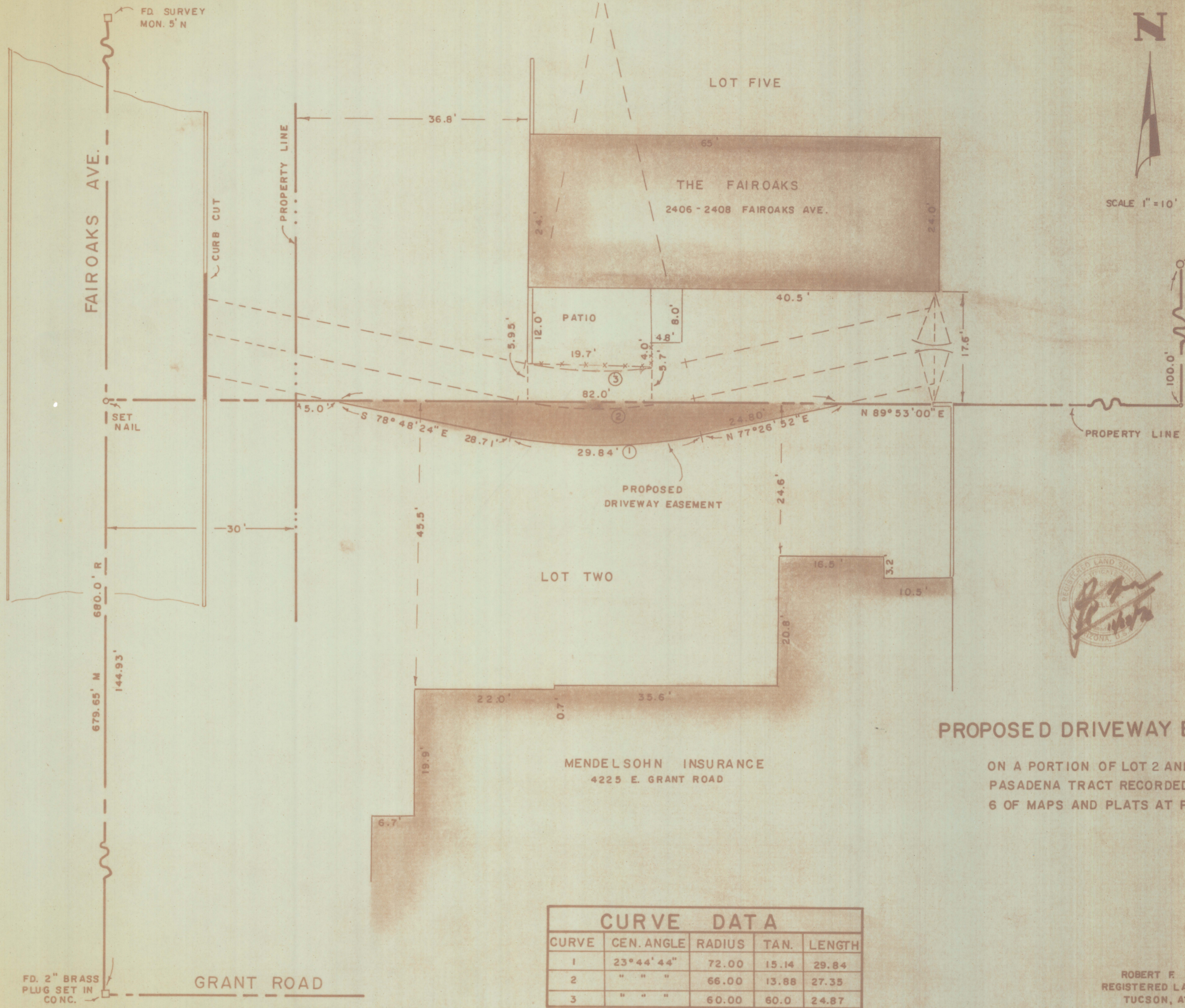
PROPOSED DRIVEWAY EASEMENT

ON A PORTION OF LOT 2 AND 5 OF EL PASADENA TRACT RECORDED IN BOOK 6 OF MAPS AND PLATS AT PAGE 36

CURVE DATA				
CURVE	CEN. ANGLE	RADIUS	TAN.	LENGTH
1	23° 44' 44"	72.00	15.14	29.84
2	" " "	66.00	13.88	27.35
3	" " "	60.00	60.0	24.87

ROBERT F. MELLEN
REGISTERED LAND SURVEYOR
TUCSON, ARIZONA

JOB # 76-145
NOVEMBER 1976



SCALE 1" = 10'

FD. 5/8" STEEL
PIN MKD.
PE 5178



PROPOSED DRIVEWAY EASEMENT

ON A PORTION OF LOT 2 AND 5 OF EL PASADENA TRACT RECORDED IN BOOK 6 OF MAPS AND PLATS AT PAGE 36

CURVE DATA				
CURVE	CEN. ANGLE	RADIUS	TAN.	LENGTH
1	23° 44' 44"	72.00	15.14	29.84
2	" " "	66.00	13.88	27.35
3	" " "	60.00	60.0	24.87

ROBERT F. MELLEN
REGISTERED LAND SURVEYOR
TUCSON, ARIZONA

JOB # 76-145
NOVEMBER 1976