

# **DISCLAIMER:**

**This unrecorded Record of Survey was donated to the City of Tucson. The City of Tucson provides this data for your personal use "as is." Additionally, the City of Tucson provides this information with the understanding that it is not guaranteed to be accurate, correct or complete and conclusions drawn from such information are the responsibility of the user.**

FD. BRASS CAP IN CONC.

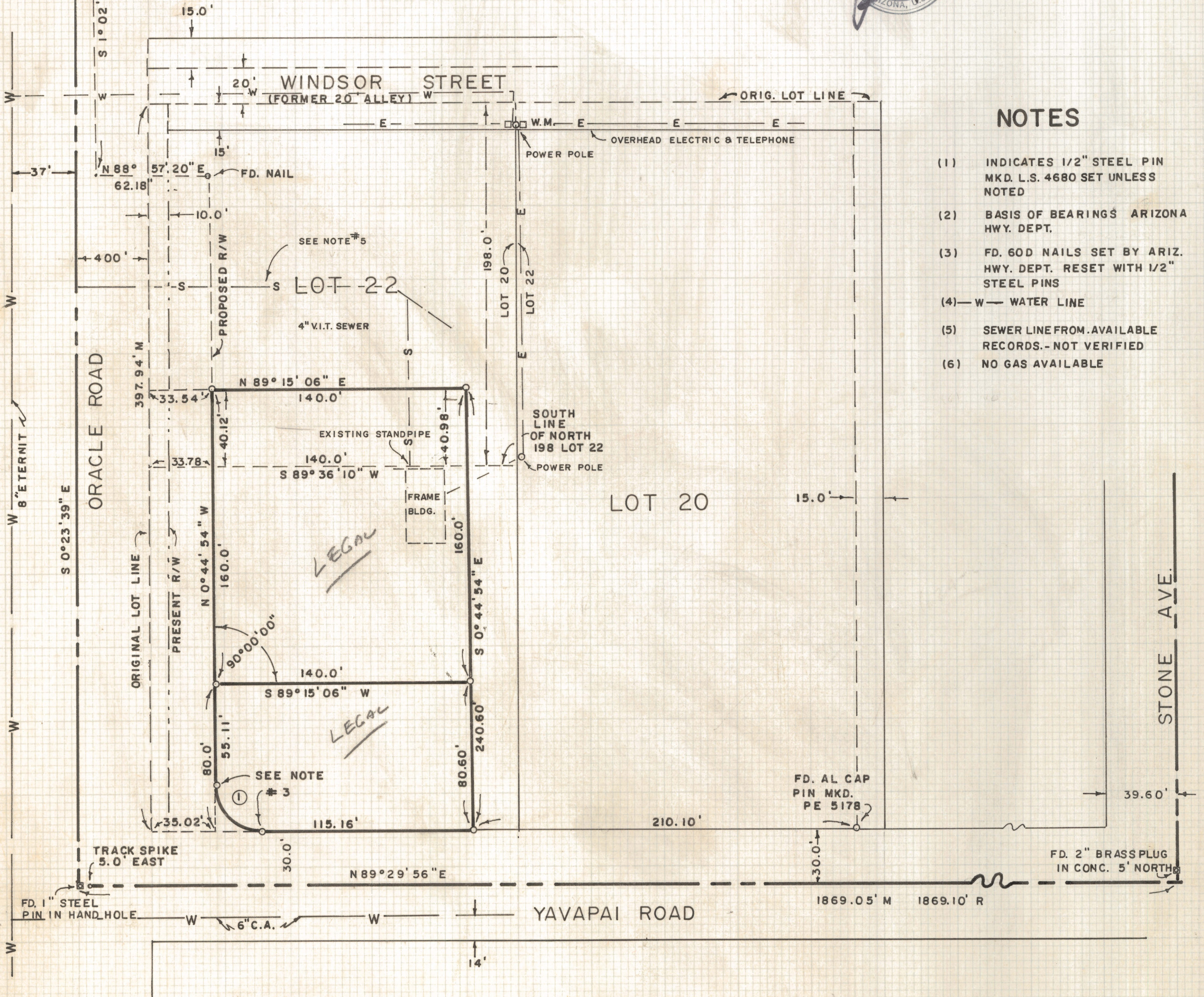
FD. NAIL

PRINCE ROAD



SCALE 1" = 40'

CURVE DATA				
NO.	CEN. ANGLE	RADIUS	TANGENT	LENGTH
1	89° 45' 10"	25.0	24.89	39.16



### NOTES

- (1) INDICATES 1/2" STEEL PIN MKD. L.S. 4680 SET UNLESS NOTED
- (2) BASIS OF BEARINGS ARIZONA HWY. DEPT.
- (3) FD. 60D NAILS SET BY ARIZ. HWY. DEPT. RESET WITH 1/2" STEEL PINS
- (4) — W — WATER LINE
- (5) SEWER LINE FROM AVAILABLE RECORDS.— NOT VERIFIED
- (6) NO GAS AVAILABLE

### RESULTS OF SURVEY

OF A PORTION OF LOT 22 OF SAWTELLE PLACE SUBDIVISION AS RECORDED IN BOOK FOUR OF MAPS AND PLATS AT PAGE SEVENTY-THREE IN THE OFFICE OF THE PIMA COUNTY RECORDER, PIMA COUNTY, ARIZONA

ROBERT F. MELLEN  
REGISTERED LAND SURVEYOR  
TUCSON, ARIZONA

JOB # 76-149  
DEC. 1976

Z-2020-615

MICK HASTON