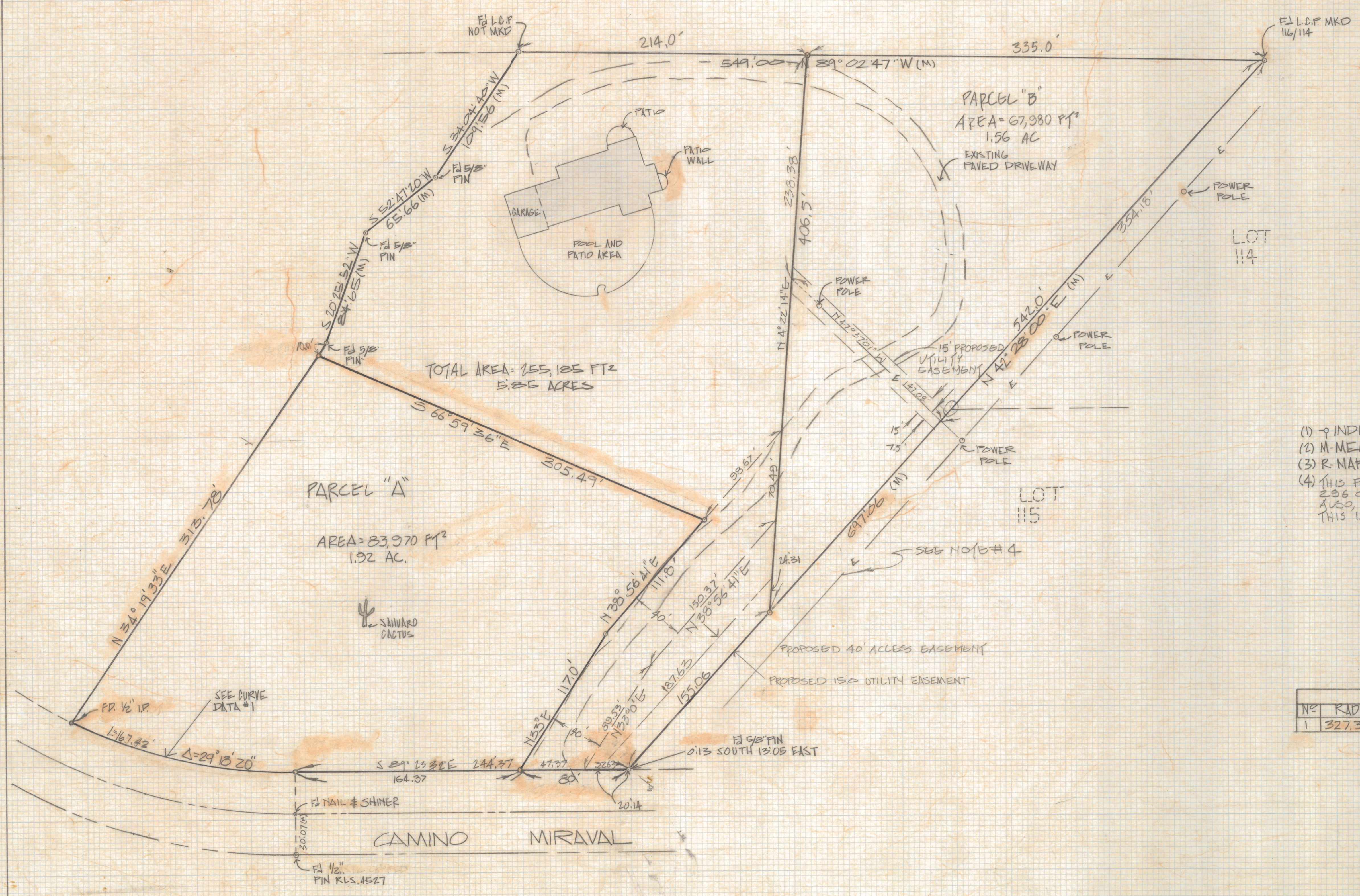
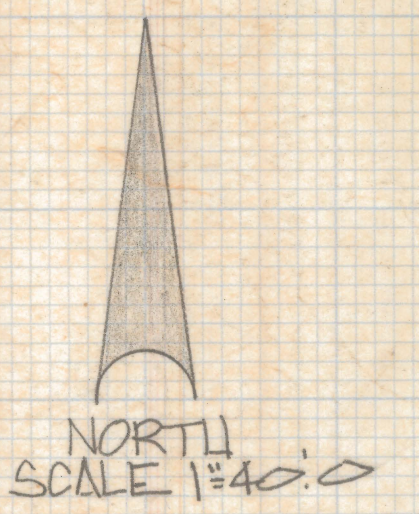


# **DISCLAIMER:**

**This unrecorded Record of Survey was donated to the City of Tucson. The City of Tucson provides this data for your personal use "as is." Additionally, the City of Tucson provides this information with the understanding that it is not guaranteed to be accurate, correct or complete and conclusions drawn from such information are the responsibility of the user.**



**NOTES**

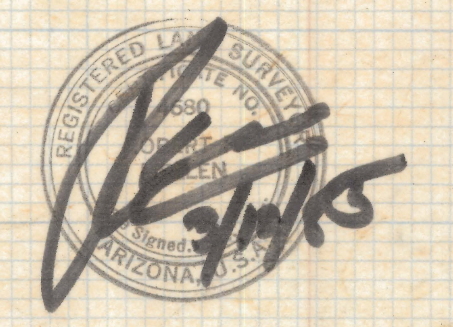
- (1)  $\rightarrow$  INDICATES SET 1/2" PIN MKD L.S. 4680 UNLESS NOTED
- (2) M. MEASURED
- (3) R. MAP OR DEED RECORD
- (4) THIS POWERLINE EASEMENT RECORDED IN BOOK 45 PAGE 286 OF MISCELLANEOUS RECORDS MAY 11, 1931. ALSO, BOOK 41 PAGE 537 MISG. RECORDS. THIS IS A BLANKET EASEMENT - OVER NO DEFINED PROPERTY

CURVE DATA				
NO	RADIUS	DELTA	TANGENT	LENGTH CHORD
1	327.34'	29°18'20"	85.59'	167.43' 165.61'

**RESULTS OF SURVEY**

OF A PORTION OF LOT 116 CATALINA FOOTHILLS ESTATE NO 1 RECORDED IN BOOK 6 OF MAPS AND PLATS AT PAGE 57 IN THE OFFICE OF THE PINA COUNTY RECORDER PINA COUNTY ARIZONA

*ERROR ON THIS PLAT STILL IN FILE P/S. J.D. 3-3-83.*



REVISED 15' UTILITY EAS. 12-85  
 REVISED PARCEL B 9-26-85  
 REVISED 15' 40' ESMNTS 9-30-85 # NOTE # 4

ROBERT F. MELLEN  
 REGISTERED LAND SURVEYOR  
 TUCSON, ARIZONA  
 JOB # 35-31