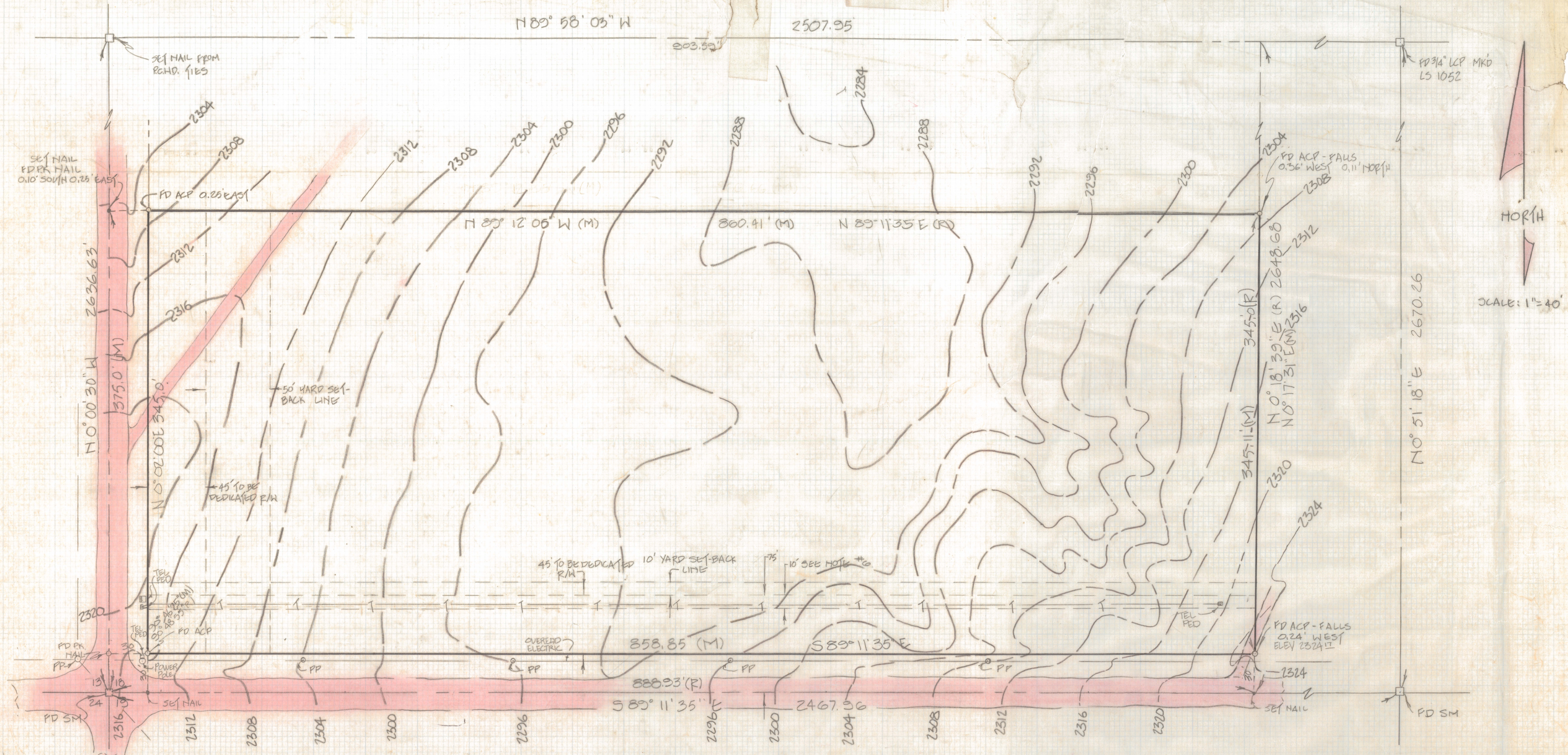


DISCLAIMER:

This unrecorded Record of Survey was donated to the City of Tucson. The City of Tucson provides this data for your personal use "as is." Additionally, the City of Tucson provides this information with the understanding that it is not guaranteed to be accurate, correct or complete and conclusions drawn from such information are the responsibility of the user.

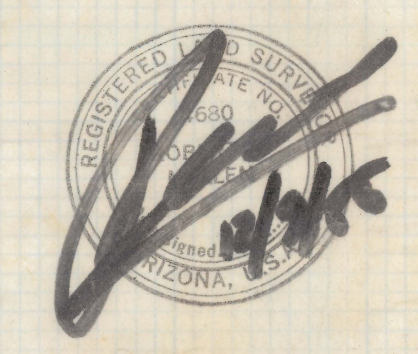


NOTES:

- (1) - INDICATES 1/2" PIN MK'D LS 4680 SET UNLESS NOTED
- (2) - MAP OR DEED RECORD
- (3) - MEASURED
- (4) - CONTOUR INTERVAL: 4'0"
- (5) - BENCHMARK: TOP BRASS CAP SOUTHWEST CORNER SECTION 18 PCHD DATUM - ELEV. = 2316.74
- (6) - TROPIC TIRE POLICY E-432576-02 IS NOT CLEAR AS TO WHETHER DOCKET 4568 PAGE 1089 REFERS TO A DEFINED OR UNDEFINED AREA.

RESULTS OF SURVEY

OF A PORTION OF LOT 4 SECTION EIGHTEEN TOWNSHIP THIRTEEN SOUTH RANGE THIRTEEN EAST, GILA AND SALT FIVE BASE AND MERIDIAN, PIMA COUNTY, ARIZONA.



ROBERT P. MELLEN
REGISTERED LAND SURVEYOR
TUCSON, ARIZONA
JOB # 85-164