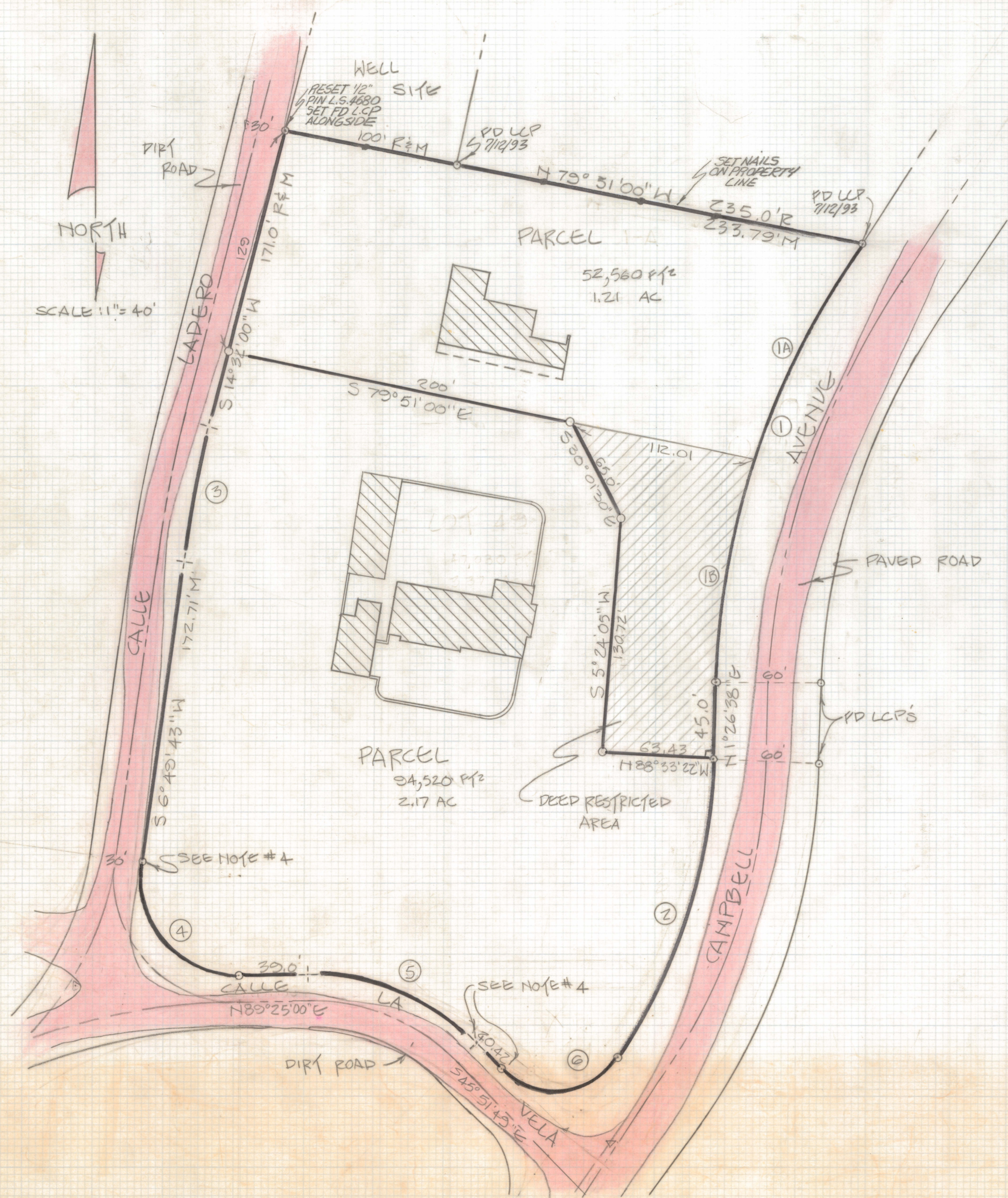
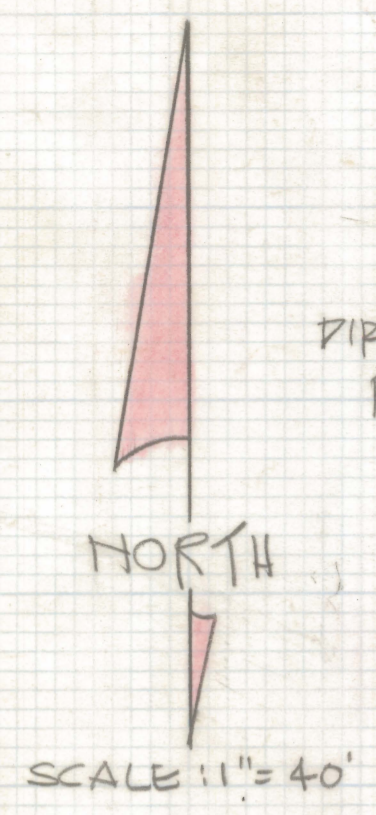


DISCLAIMER:

This unrecorded Record of Survey was donated to the City of Tucson. The City of Tucson provides this data for your personal use "as is." Additionally, the City of Tucson provides this information with the understanding that it is not guaranteed to be accurate, correct or complete and conclusions drawn from such information are the responsibility of the user.



CURVE DATA

#	Δ	R	L	T	C	
1	33° 04' 40"	451.20	260.48	133.98	256.88	1688
2	33° 17' 22"	311.53	181.00	93.14	178.47	
3	7° 42' 17"	572.43	76.98	38.55	76.93	
4	97° 24' 43"	53.97	91.76	61.45	81.11	
5	44° 43' 11"	138.57	108.15	57.00	105.43	
6	99° 24' 11"	42.40	73.56	50.00	64.68	
1A	16° 52' 53"	451.20	132.94	66.95	132.46	219
1B	16° 11' 47"	451.20	127.54	64.20	127.12	193

NOTES:
 (1) - INDICATES 1/2" PIN MKD LS 4680 SET UNLESS NOTED
 (2) - R - MAP OR DEED RECORD
 (3) - M - MEASURED
 (4) - THE EXISTING ROADS WERE USED TO DETERMINE THE LOCATION OF THESE POINTS, AS THE RECORDED SUBDIVISION DID NOT HAVE THE SUFFICIENT DATA.

RESULTS OF SURVEY
 OF LOT 49 OF CATALINA POOTHILLS ESTATES SUBDIVISION AS RECORDED IN BOOK 6 OF MAPS AND PLATS AT PAGE 57 IN THE OFFICE OF THE PIMA COUNTY RECORDER, PIMA COUNTY, ARIZONA.



REVISED MAP SET NAILS ON NORTH PL. 7-12-93 REGISTERED LAND SURVEYOR
 REVISED BLDGS. 2/14/86
 ROBERT P. MELLEM
 TUCSON, ARIZONA
 JOB 86-13(20)