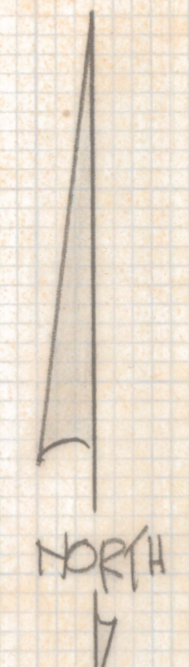


DISCLAIMER:

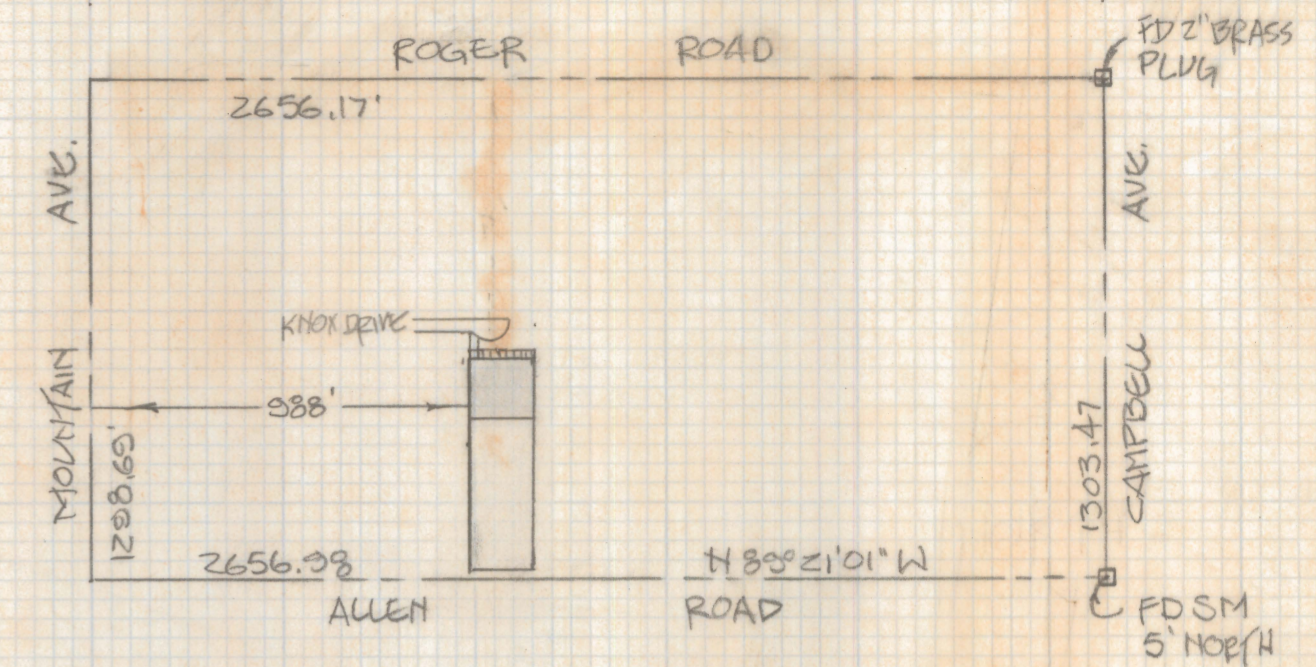
This unrecorded Record of Survey was donated to the City of Tucson. The City of Tucson provides this data for your personal use "as is." Additionally, the City of Tucson provides this information with the understanding that it is not guaranteed to be accurate, correct or complete and conclusions drawn from such information are the responsibility of the user.

CURVE DATA

NO	DELTA	RADIUS	LENGTH	TANGENT	CHORD
1	18°38'14"	50.0'	16.26'	8.20'	16.10'
2	22°46'21"	50.0'	19.87'	10.07'	19.74'
3	9°45'00"	50.0'	8.51'	4.26'	8.50'

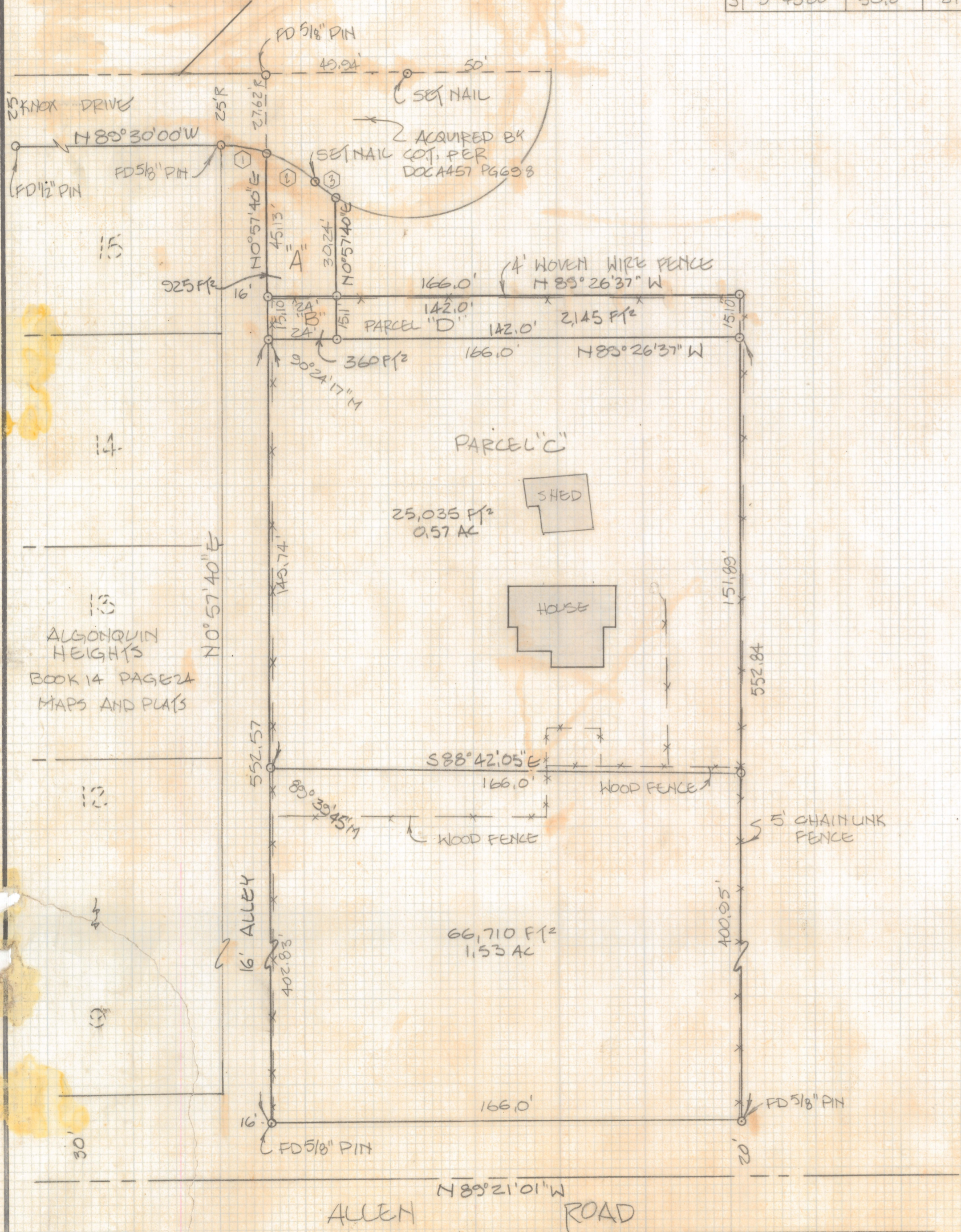


SCALE: 1"=30'



LOCATION MAP

SCALE: 1"=500'



NOTES:

- (1) P INDICATES 1/2" PIN MKD L54680 SET UNLESS NOTED
- (2) BASIS OF BEARING N 0° 57' 40" E - SAID BEARING BEING THE EAST LINE OF THE ALGONQUIN HEIGHTS SUBMISSION AS RECORDED IN BOOK 14 OF MAPS AND PLATS AT PAGE 22, PIMA COUNTY, ARIZONA.

RESULTS OF SURVEY

OF A PORTION OF THE NORTH WEST QUARTER OF THE NORTHEAST QUARTER OF SECTION 30, TOWNSHIP 13 SOUTH OF RANGE 14 EAST, GILA AND SALT RIVER, BASE AND MERIDIAN, PIMA COUNTY, ARIZONA.



ROBERT F. MELLE
REGISTERED LAND SURVEYOR
TUCSON, ARIZONA
JOB # 86-66