

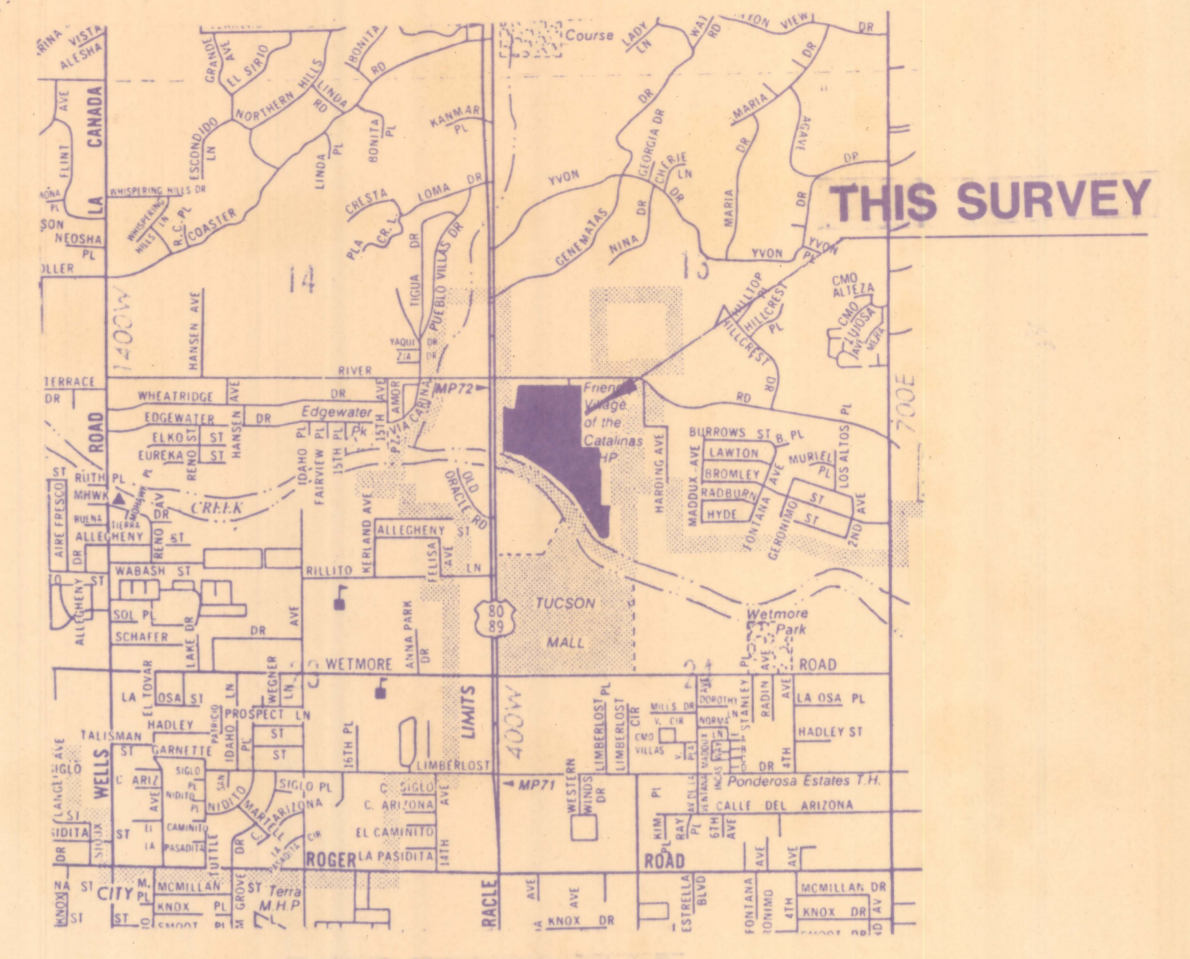
# **DISCLAIMER:**

**This unrecorded Record of Survey was donated to the City of Tucson. The City of Tucson provides this data for your personal use "as is." Additionally, the City of Tucson provides this information with the understanding that it is not guaranteed to be accurate, correct or complete and conclusions drawn from such information are the responsibility of the user.**

MARYLAND HILLS ESTATES  
BK. 9, PG. 55 M.&P.

PAUL ACREAGE TRACT  
BK. 3, PG. 32 M.&P.

THE FRIENDLY VILLAGE OF THE CATALINAS  
BK. 21, PG. 28 M.&P.



LOCATION MAP  
SECTIONS 13, AND 24, T. 13 S., R. 13 E.,  
G. & S. R. B. & M., PIMA CO., ARIZONA

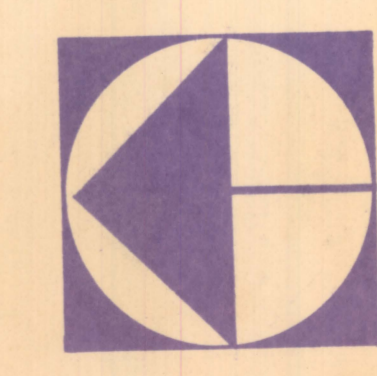
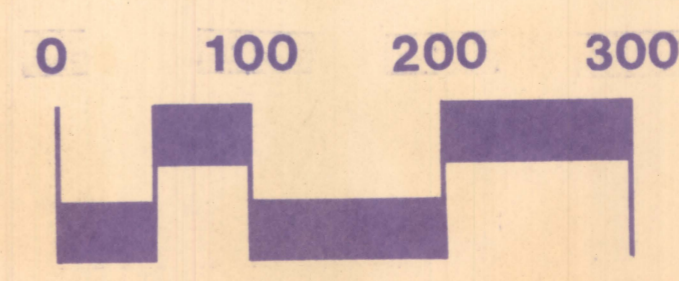
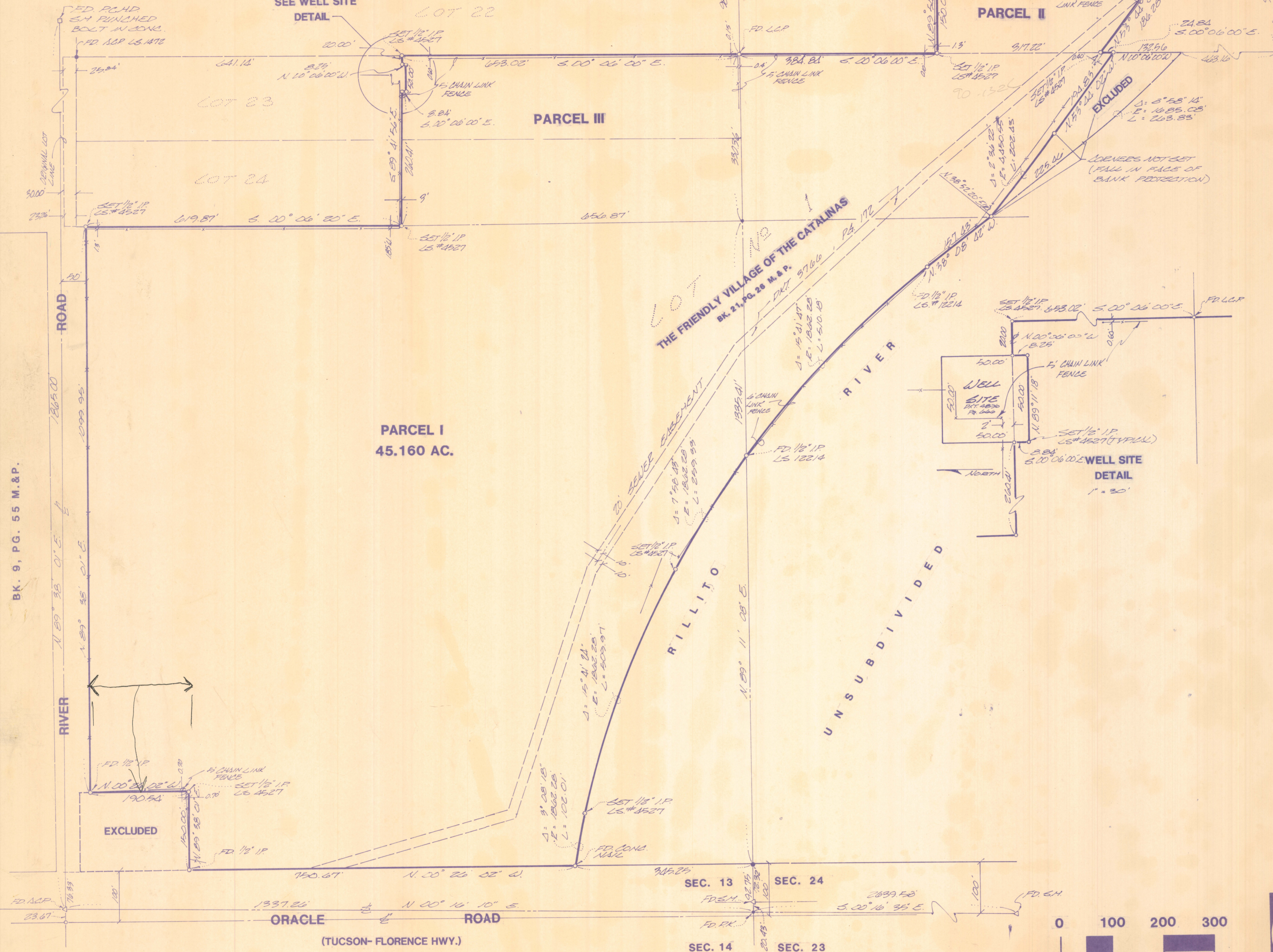
GENERAL NOTES

- THIS SURVEY PERFORMED IN ACCORDANCE WITH THE LEGAL DESCRIPTION RECORDED IN DOCKET 6896, PAGE 744.

PARCEL I  
45.160 AC.

PARCEL II

PARCEL III



The WLB Group

Engineering • Planning • Surveying  
Landscape Architecture • Urban Design  
Offices in Tucson and Phoenix, Arizona  
and Rancho Cucamonga, California  
4444 East Broadway  
Tucson, Arizona 85711 (602) 881-7480

SURVEY OF A PORTION OF THE SW. 1/4 OF SECTION 13,  
AND A PORTION OF THE NW. 1/4 OF SECTION 24, T. 13 S.,  
R. 13 E., G. & S. R. B. & M., PIMA CO., ARIZONA

Sheet Title

No.	Date	Item

Scale 1" = 100'  
Job No. 186019  
Date 3/17/86  
Drawn By B.L.A.  
Checked By KEZ



Z-2020-636