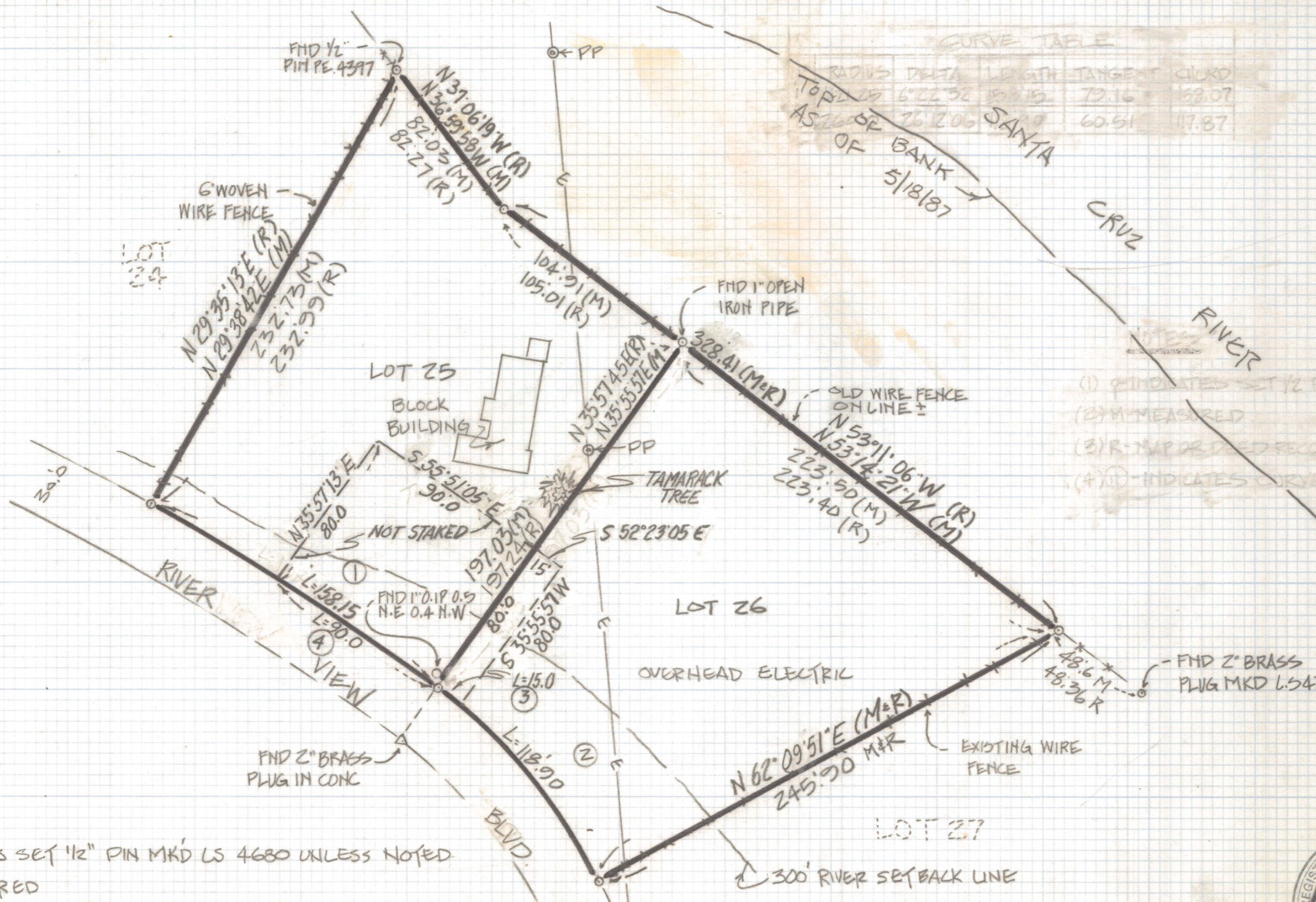


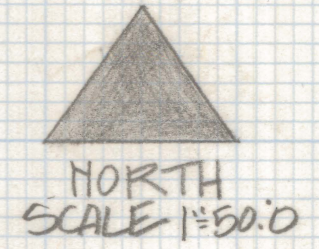
DISCLAIMER:

This unrecorded Record of Survey was donated to the City of Tucson. The City of Tucson provides this data for your personal use "as is." Additionally, the City of Tucson provides this information with the understanding that it is not guaranteed to be accurate, correct or complete and conclusions drawn from such information are the responsibility of the user.



CURVE TABLE

RADIUS	DELTA	LENGTH	TANGENT	CHORD
TOP OF BANK	6°22'32"	158.15	79.16	158.07
AS OF 5/18/87	26°12'06"	118.90	60.51	117.87



- (1) ♀ INDICATES SET 1/2" PIN MKD L.S. 4680 UNLESS NOTED
- (2) (M) - MEASURED
- (3) (R) - MAP OR DEED RECORD
- (4) Ⓞ INDICATES CURVE - SEE CURVE DATA

NOTES:

- (1) ♀ INDICATES SET 1/2" PIN MKD L.S. 4680 UNLESS NOTED
- (2) (M) - MEASURED
- (3) (R) - MAP OR DEED RECORD
- (4) Ⓞ INDICATES CURVE - SEE CURVE DATA

CURVE DATA

NO	RADIUS	DELTA	LENGTH	TANGENT	CHORD
1	1421.25	6°22'32"	158.15	79.16	158.07
2	260.0	26°12'06"	118.90	60.51	117.87
3	260.0	3°18'20"	15.0	7.50	15.0
4	1421.25	3°37'42"	90.0	45.02	89.98

RESULTS OF SURVEY

OF LOTS 25 AND 26 OF EL RIO ACRES RECORDED IN BOOK 6 OF MAPS AND PLATS AT PAGE 11 IN THE OFFICE OF THE PIMA COUNTY RECORDER PIMA COUNTY ARIZONA



ROBERT F. MELTEN
REGISTERED LAND SURVEYOR
TUCSON, ARIZONA
JOB# 87-3

REV - 9-7-93
REV - 5-13-87