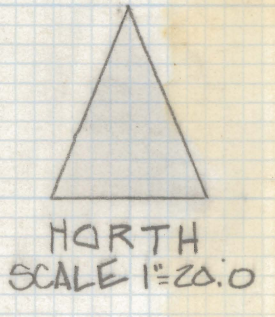
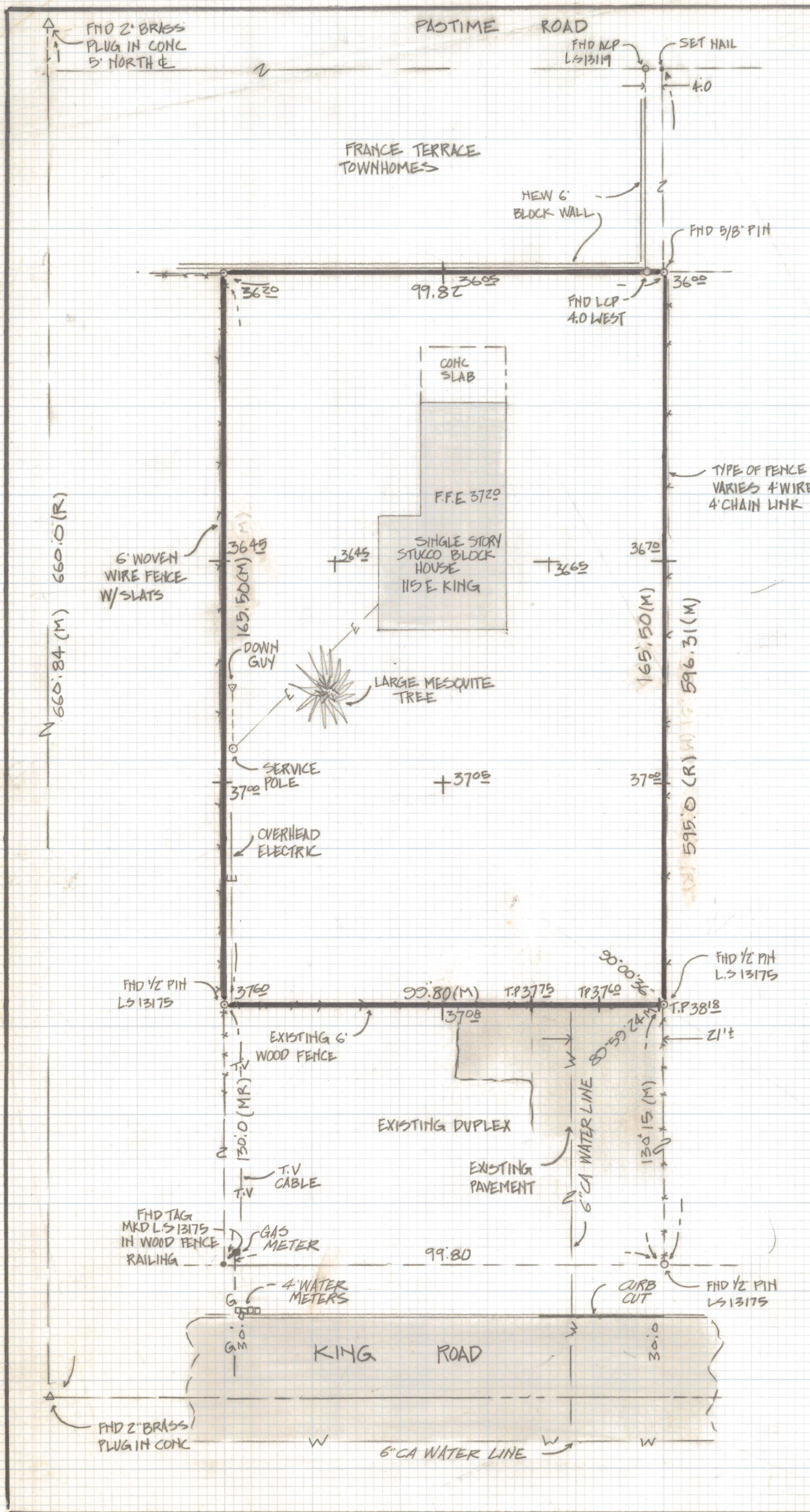


# **DISCLAIMER:**

**This unrecorded Record of Survey was donated to the City of Tucson. The City of Tucson provides this data for your personal use "as is." Additionally, the City of Tucson provides this information with the understanding that it is not guaranteed to be accurate, correct or complete and conclusions drawn from such information are the responsibility of the user.**



**NOTES**

- (1) ♀ INDICATES SET 1/2" PIN MKD L.S. 4680 UNLESS NOTED
- (2) M - MEASURED
- (3) R - MAP OR DEED RECORD
- (4) BENCHMARK "X" ON S.W. CORNER OF FRONT WALK OF PIMA FEDERAL CREDIT UNION PER C.O.T. DATUM - FLD BK 1458 PG 21 B.M. ELEV 2338.41
- (5) T.P. - TOP OF PAVEMENT

**RESULTS OF SURVEY**

OF A PORTION OF LOT 15 PASTIME ACRES RESUBDIVISION, RECORDED IN BOOK 5 OF MAPS AND PLATS AT PAGE 37 IN THE OFFICE OF THE PIMA COUNTY RECORDER PIMA COUNTY, ARIZONA



ROBERT F. MELLEN  
REGISTERED LAND SURVEYOR  
TUCSON, ARIZONA  
JOB # 87-6