

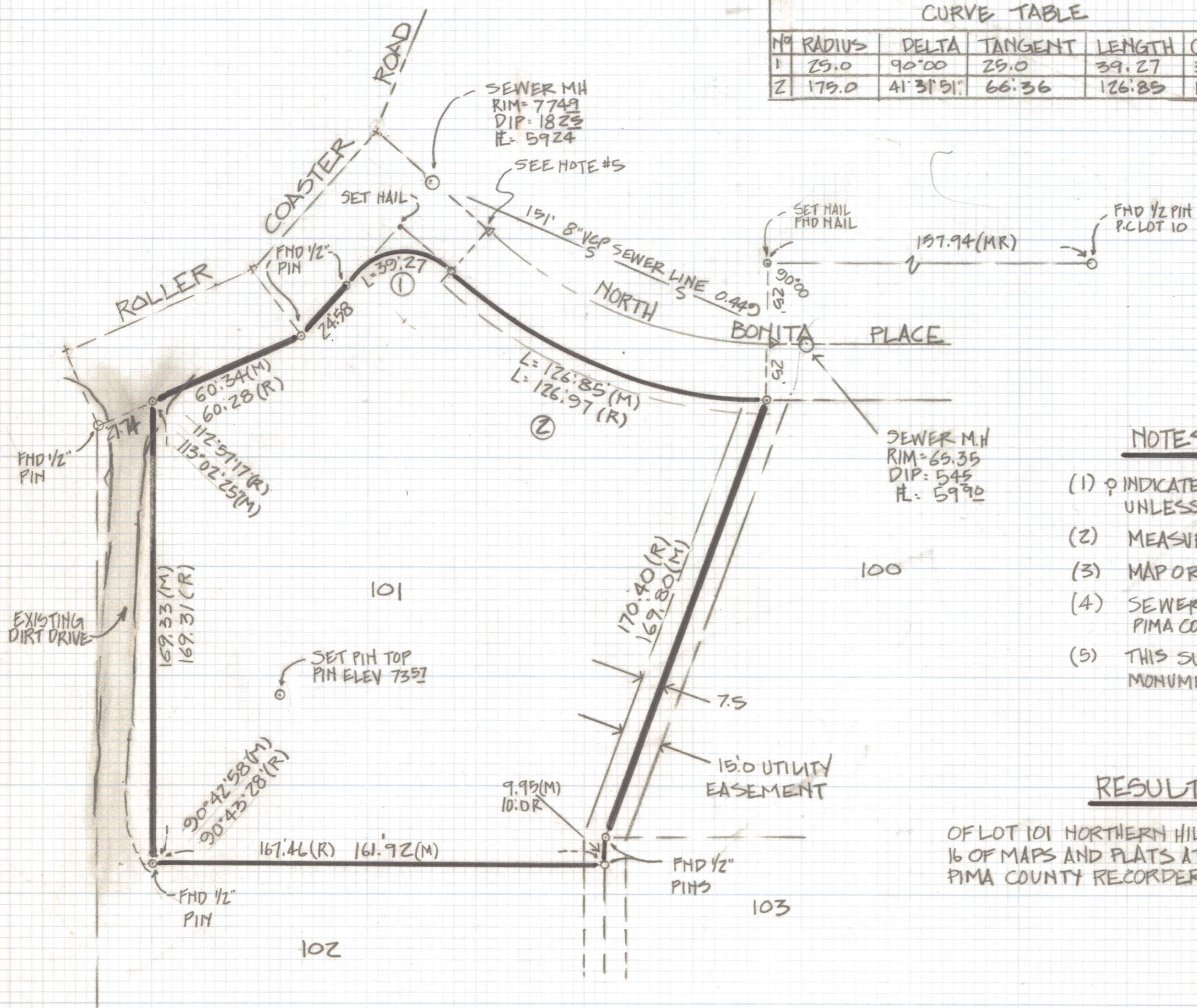
DISCLAIMER:

This unrecorded Record of Survey was donated to the City of Tucson. The City of Tucson provides this data for your personal use "as is." Additionally, the City of Tucson provides this information with the understanding that it is not guaranteed to be accurate, correct or complete and conclusions drawn from such information are the responsibility of the user.

CURVE TABLE				
NO	RADIUS	DELTA	TANGENT	CHORD
1	29.0	90°00'	29.0	39.27
2	179.0	41°31'51"	66.36	126.89



SCALE 1"=40.0'



NOTES

- (1) ♀ INDICATES SET 1/2" PIN MKD L.S 4680 UNLESS NOTED
- (2) MEASURED
- (3) MAP OR DEED RECORD
- (4) SEWER DATA PLAN NO 251 B SHEET 6 OF 7 PIMA COUNTY ARIZONA
- (5) THIS SURVEY BASED ON FOUND CORNER PINS SURVEY MONUMENTS FALL APPROXIMATELY 1.2 EAST

RESULTS OF SURVEY

OF LOT 101 NORTHERN HILLS ESTATES RECORDED IN BOOK 16 OF MAPS AND PLATS AT PAGE 98 IN THE OFFICE OF THE PIMA COUNTY RECORDER PIMA COUNTY, ARIZONA



ROBERT F. MELLEN
REGISTERED LAND SURVEYOR
TUCSON, ARIZONA
JOB # 87-9