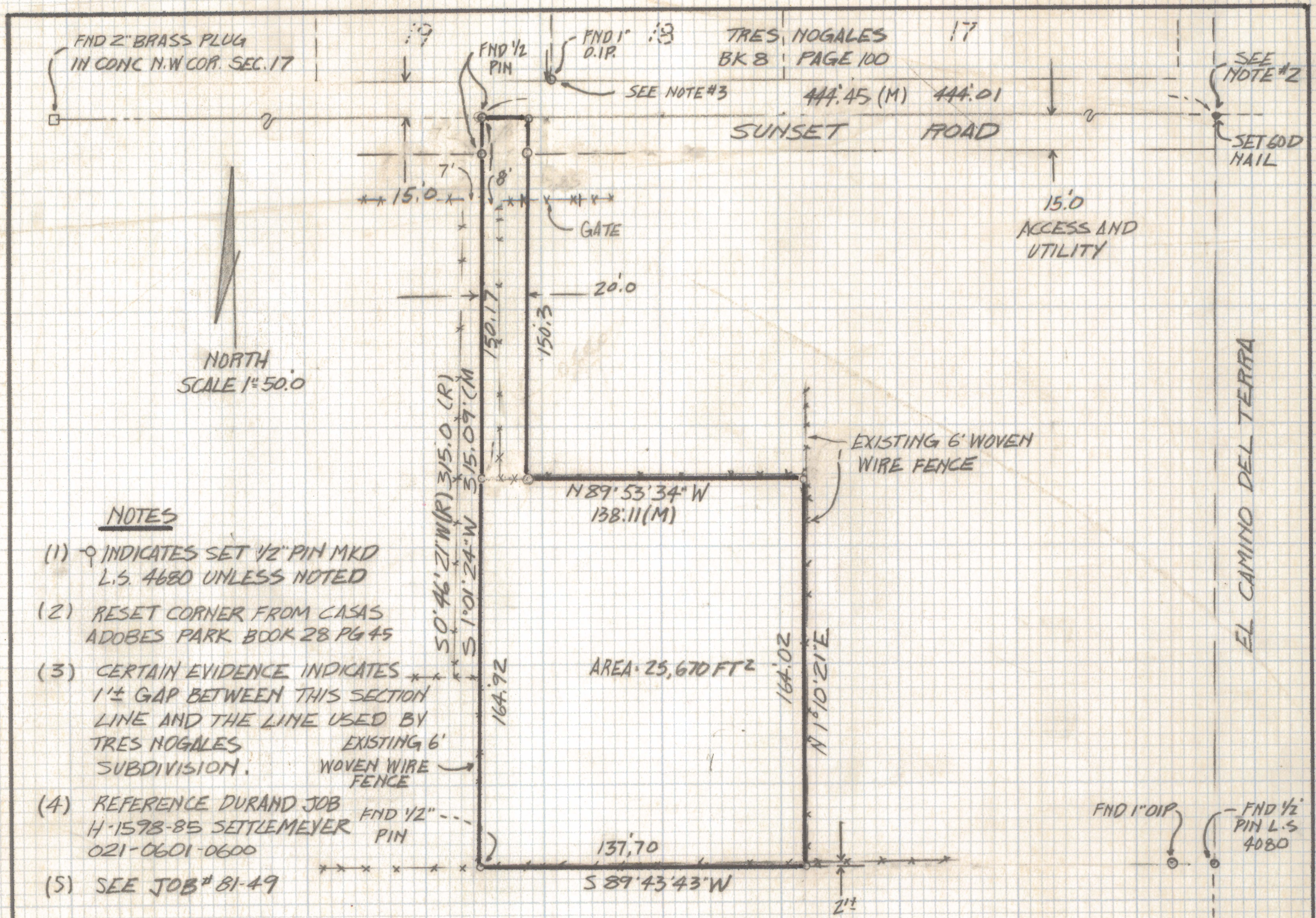


DISCLAIMER:

This unrecorded Record of Survey was donated to the City of Tucson. The City of Tucson provides this data for your personal use "as is." Additionally, the City of Tucson provides this information with the understanding that it is not guaranteed to be accurate, correct or complete and conclusions drawn from such information are the responsibility of the user.



NOTES

- (1) ♀ INDICATES SET 1/2" PIN MKD L.S. 4680 UNLESS NOTED
- (2) RESET CORNER FROM CASAS ADOBES PARK BOOK 28 PG 45
- (3) CERTAIN EVIDENCE INDICATES 1'± GAP BETWEEN THIS SECTION LINE AND THE LINE USED BY TRES NOGALES SUBDIVISION.
- (4) REFERENCE DURAND JOB H-1598-85 SETTLEMAYER 021-0601-0600
- (5) SEE JOB # 81-49

RESULTS OF SURVEY

OFA PORTION OF THE NORTHEAST QUARTER OF THE NORTHWEST QUARTER SECTION 17 TWP 13S RANGE 14 EAST GILA SALT RIVER BASE AND MERIDIAN PIMA COUNTY, ARIZONA



ROBERT F. MELLEN
 REGISTERED LAND SURVEYOR
 TUCSON, ARIZONA
 JOB # 87-19