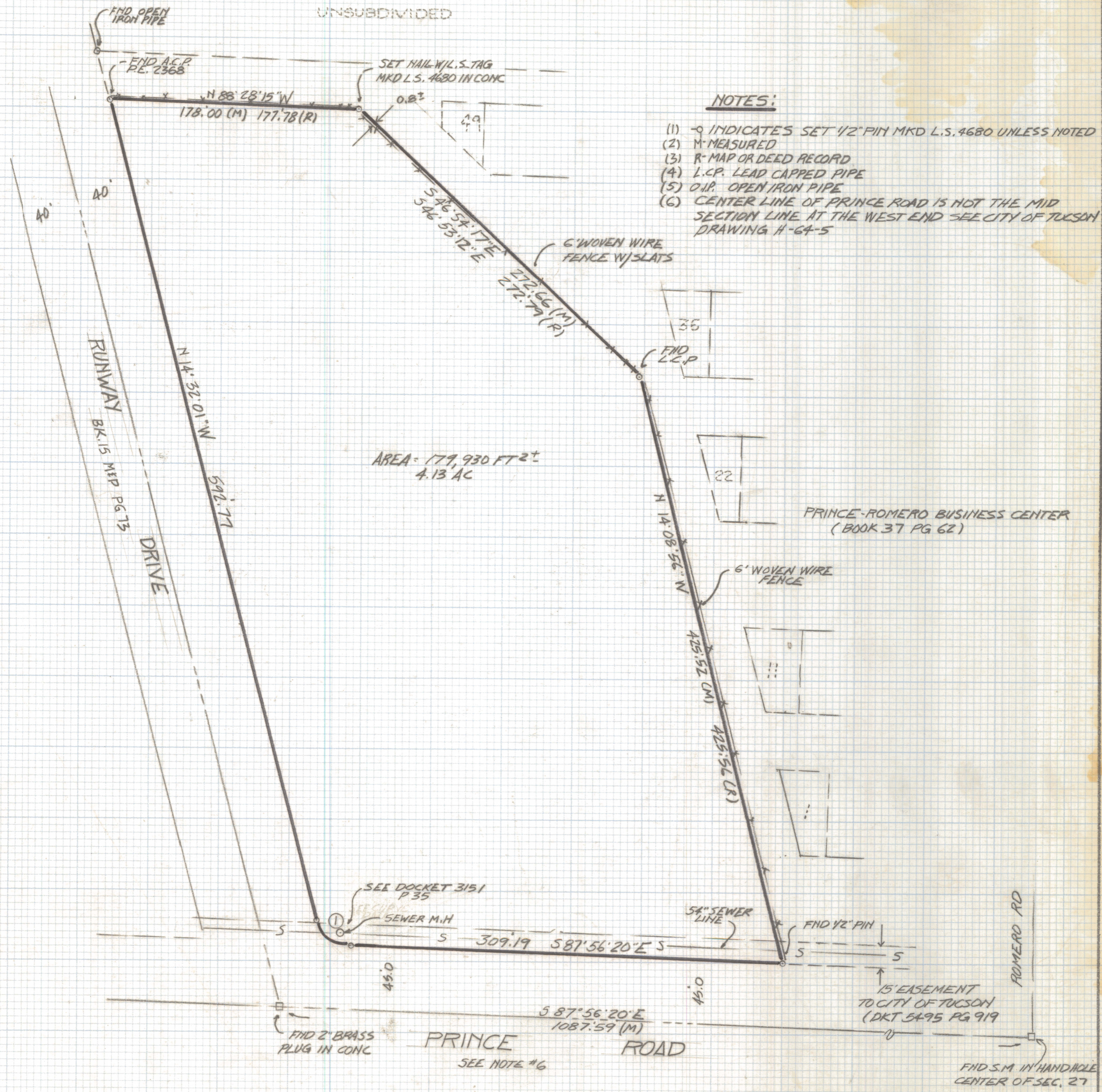
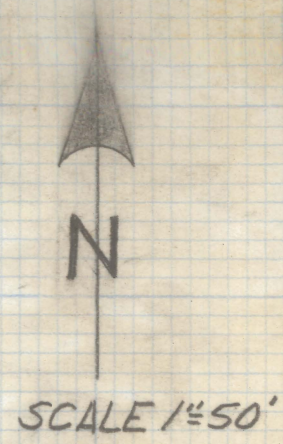


DISCLAIMER:

This unrecorded Record of Survey was donated to the City of Tucson. The City of Tucson provides this data for your personal use "as is." Additionally, the City of Tucson provides this information with the understanding that it is not guaranteed to be accurate, correct or complete and conclusions drawn from such information are the responsibility of the user.

CURVE DATA				
NO	RADIUS	DELTA	TANGENT	CHORD
1	25.0	73°24'19"	18.64	32.03
				29.88



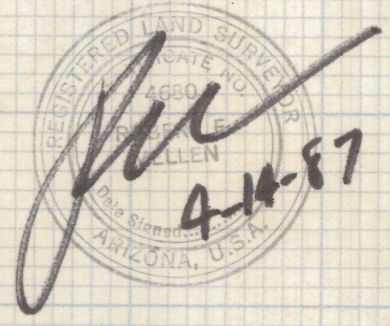
NOTES:

- (1) \odot INDICATES SET 1/2" PIN MKD L.S. 4680 UNLESS NOTED
- (2) M- MEASURED
- (3) R- MAP OR DEED RECORD
- (4) L.C.P. LEAD CAPPED PIPE
- (5) O.I.P. OPEN IRON PIPE
- (6) CENTER LINE OF PRINCE ROAD IS NOT THE MID SECTION LINE AT THE WEST END SEE CITY OF TUCSON DRAWING H-64-5

AREA = 179,930 FT²
4.13 AC

RESULTS OF SURVEY

OF A PORTION OF THE SOUTH HALF OF THE NORTHWEST QUARTER OF SECTION 27, TOWNSHIP 13 SOUTH, OF RANGE 13 EAST GILA AND SALT RIVER BASE AND MERIDIAN PIMA COUNTY, ARIZONA



ROBERT F. MELLEN
REGISTERED LAND SURVEYOR
TUCSON, ARIZONA
JOB # 87-33