

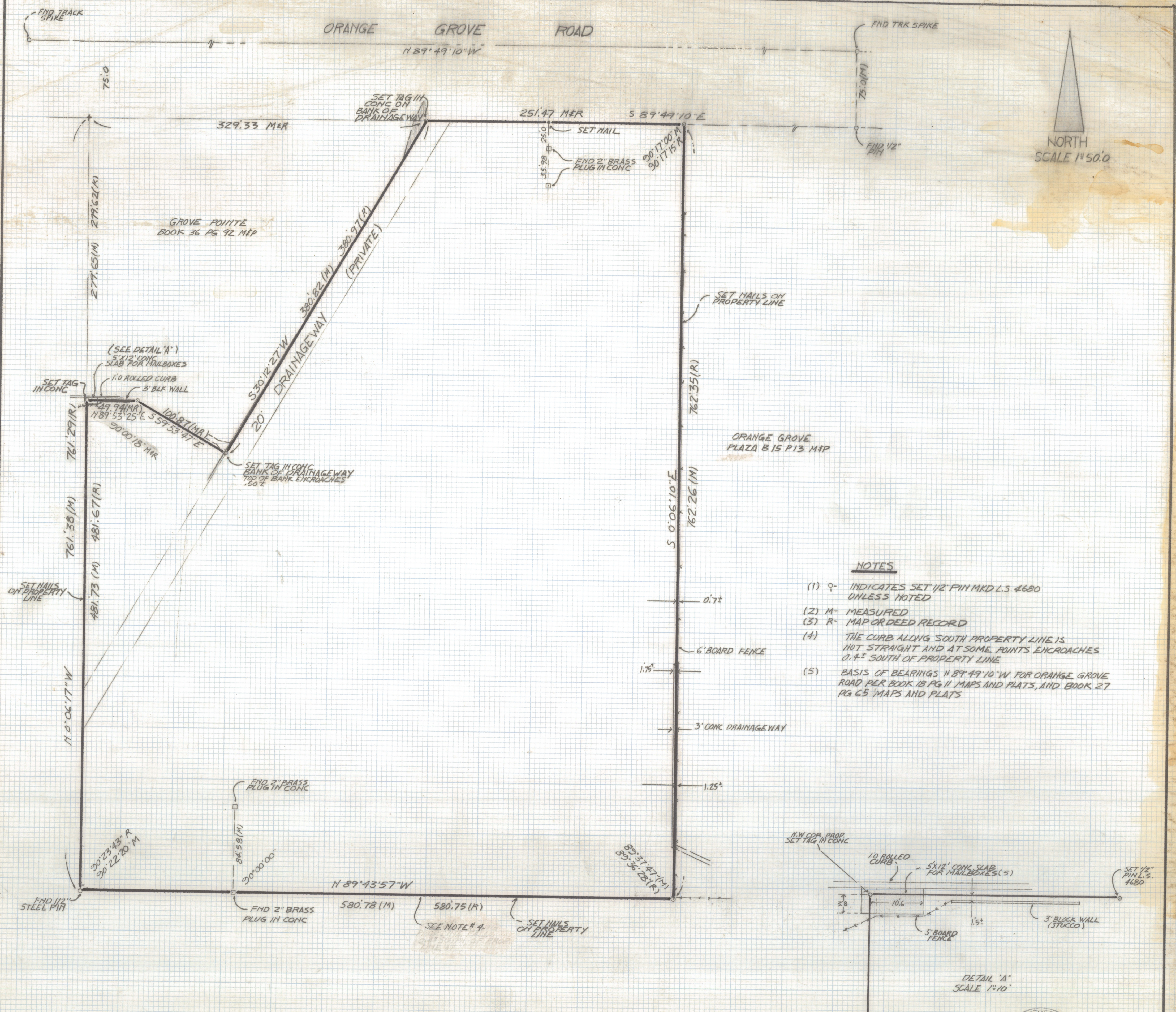
DISCLAIMER:

This unrecorded Record of Survey was donated to the City of Tucson. The City of Tucson provides this data for your personal use "as is." Additionally, the City of Tucson provides this information with the understanding that it is not guaranteed to be accurate, correct or complete and conclusions drawn from such information are the responsibility of the user.

ORANGE GROVE ROAD

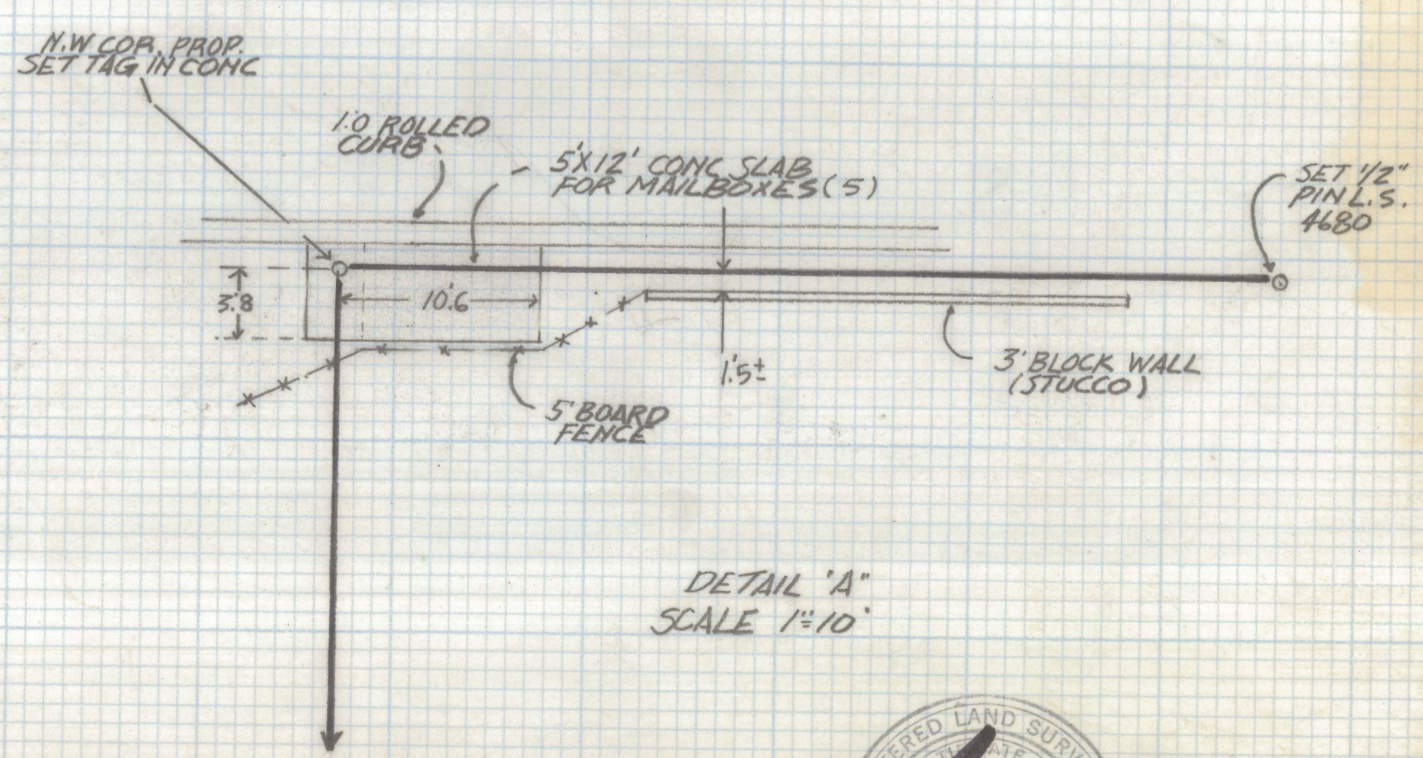
N 89° 49' 10" W

NORTH
SCALE 1"=50.0'



NOTES

- (1) \circ INDICATES SET 1/2" PIN MKD L.S. 4680 UNLESS NOTED
- (2) M- MEASURED
- (3) R- MAP OR DEED RECORD
- (4) THE CURB ALONG SOUTH PROPERTY LINE IS NOT STRAIGHT AND AT SOME POINTS ENCRDACHES 0.4' SOUTH OF PROPERTY LINE
- (5) BASIS OF BEARINGS N 89° 49' 10" W FOR ORANGE GROVE ROAD PER BOOK 18 PG 11 MAPS AND PLATS, AND BOOK 27 PG 65 MAPS AND PLATS



RESULTS OF SURVEY

OF A PORTION OF ORANGE GROVE MANOR AS RECORDED IN BOOK 27 OF MAPS AND PLATS AT PAGE 65 IN THE OFFICE OF THE PIMA COUNTY RECORDER PIMA COUNTY, ARIZONA



ROBERT F. MELIEN
REGISTERED LAND SURVEYOR
TUCSON, ARIZONA
JOB # 87-36