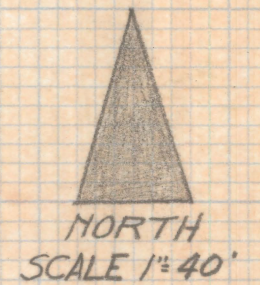


DISCLAIMER:

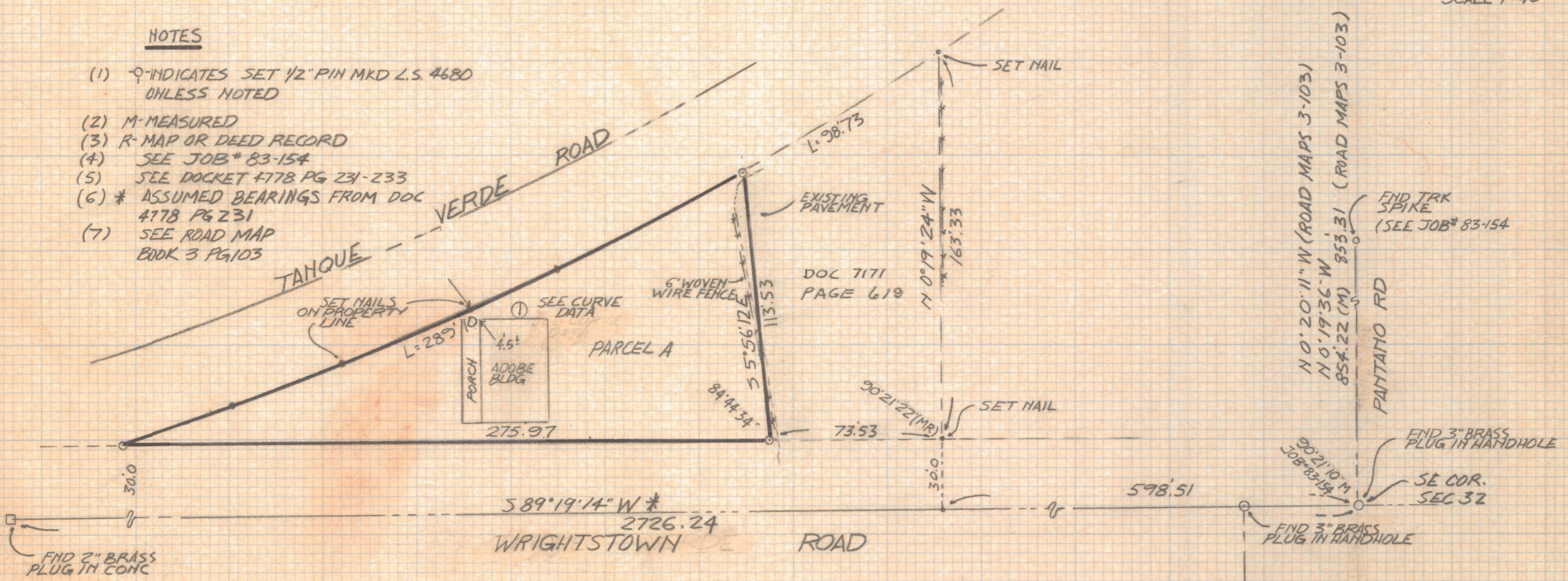
This unrecorded Record of Survey was donated to the City of Tucson. The City of Tucson provides this data for your personal use "as is." Additionally, the City of Tucson provides this information with the understanding that it is not guaranteed to be accurate, correct or complete and conclusions drawn from such information are the responsibility of the user.

CURVE DATA					
NO.	RADIUS	DELTA	TANGENT	LENGTH	CHORD
1	1469.90	11°16'08"	145.02	289.10	288.63



NOTES

- (1) \circ INDICATES SET 1/2" PIN MKD L.S. 4680 UNLESS NOTED
- (2) M-MEASURED
- (3) R-MAP OR DEED RECORD
- (4) SEE JOB# 83-154
- (5) SEE DOCKET 4778 PG 231-233
- (6) * ASSUMED BEARINGS FROM DOC 4778 PG 231
- (7) SEE ROAD MAP BOOK 3 PG 103



RESULTS OF SURVEY

OF A PORTION OF THE SOUTHEAST QUARTER OF THE SOUTHEAST QUARTER SECTION 32 TOWNSHIP 13 SOUTH OF RANGE 15 EAST GILA, SALT RIVER BASE AND MERIDIAN PIMA COUNTY, ARIZONA



ROBERT F. MELLEN
REGISTERED LAND SURVEY
TUCSON, ARIZONA
JOB # 87-38

REVISED LEGAL PARCEL A 10-9-92

Z-2020-662