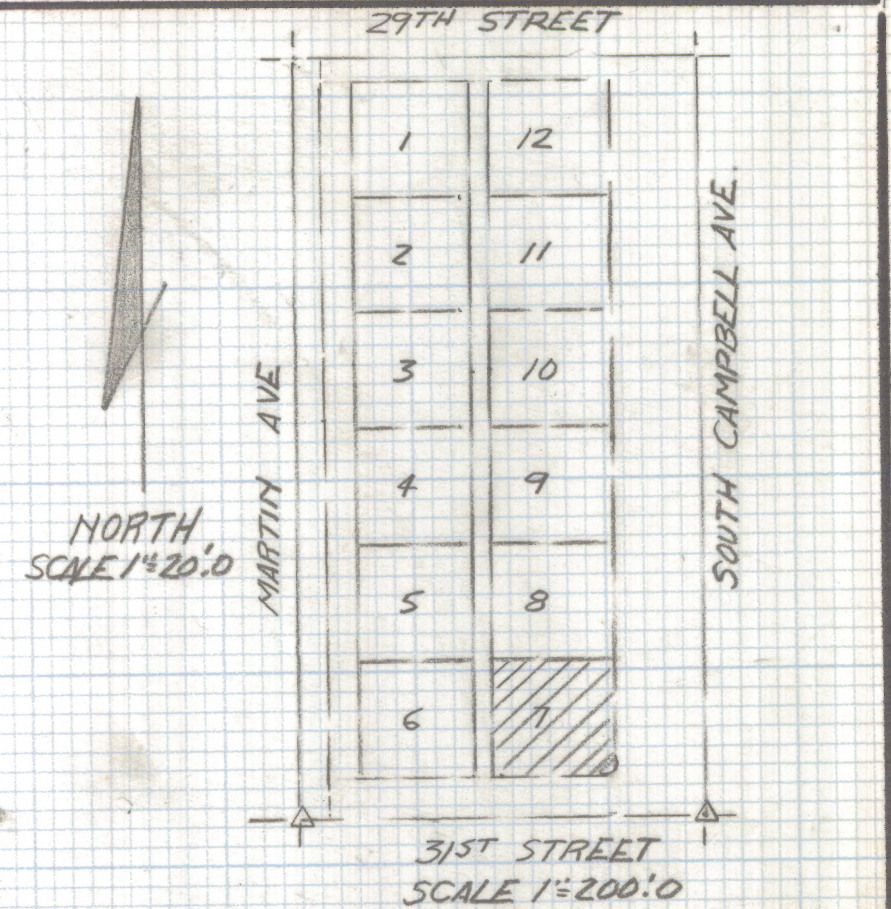
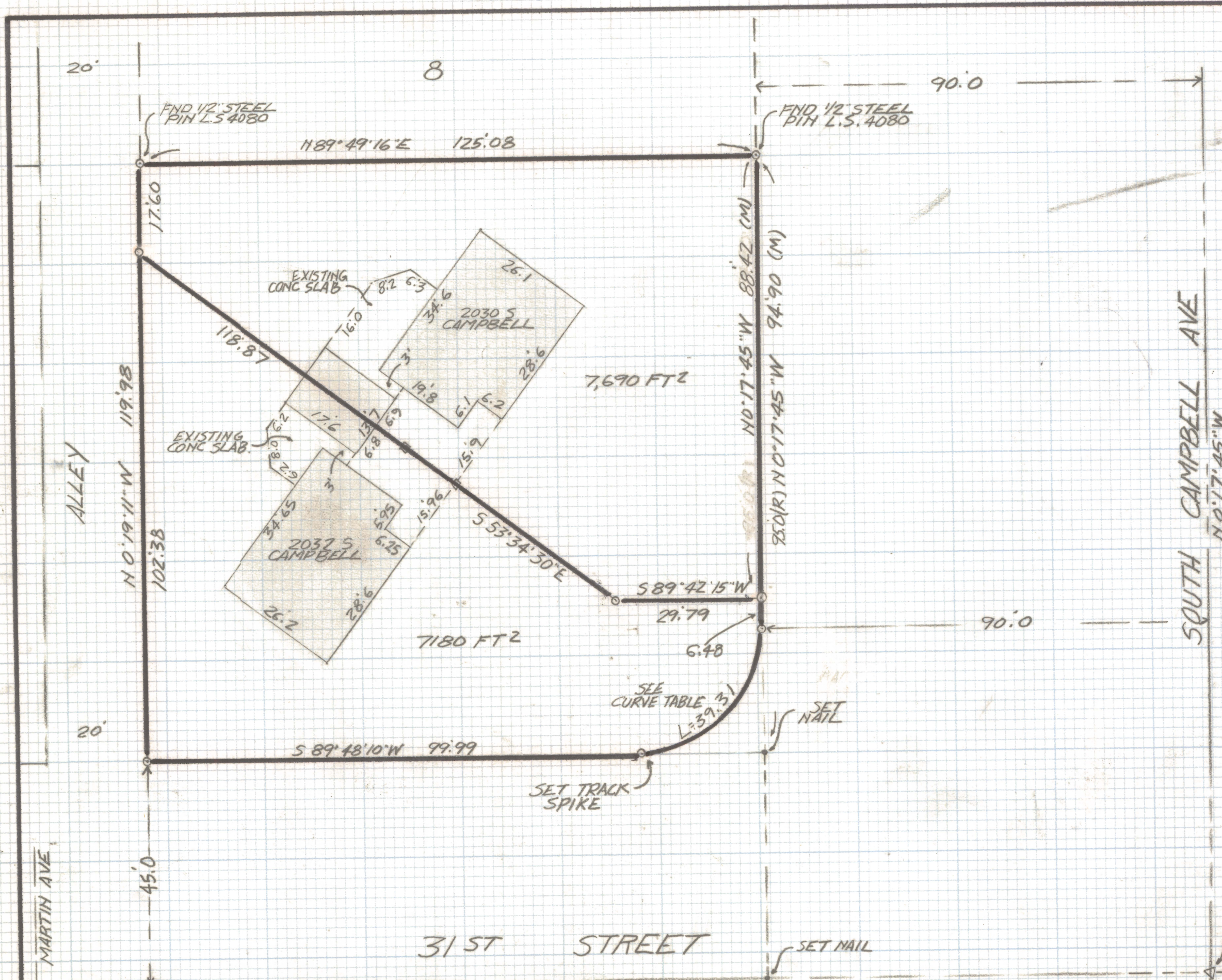


DISCLAIMER:

This unrecorded Record of Survey was donated to the City of Tucson. The City of Tucson provides this data for your personal use "as is." Additionally, the City of Tucson provides this information with the understanding that it is not guaranteed to be accurate, correct or complete and conclusions drawn from such information are the responsibility of the user.



- NOTES**
- (1) q INDICATES SET 1/2" PIN MKD L.S. 4680 UNLESS NOTED
 - (2) M-MEASURED
 - (3) R-MAP OR DEED RECORD

CURVE TABLE

NO	RADIUS	DELTA	TANGENT	LENGTH	CHORD
1M	25.0	90°05'55"	25.04	39.31	35.39
2R	25.0	90°06'45"	25.06	39.32	35.39

RESULTS OF SURVEY

OF LOT 7 BLOCK 3 OF PUEBLO GARDENS RECORDED IN BOOK 8 OF MAPS AND PLATS AT PAGE 84 IN THE OFFICE OF THE PIMA COUNTY RECORDER PIMA COUNTY, ARIZONA



ROBERT F. MELLEN
REGISTERED LAND SURVEYOR
TUCSON, ARIZONA
JOB# 87-45