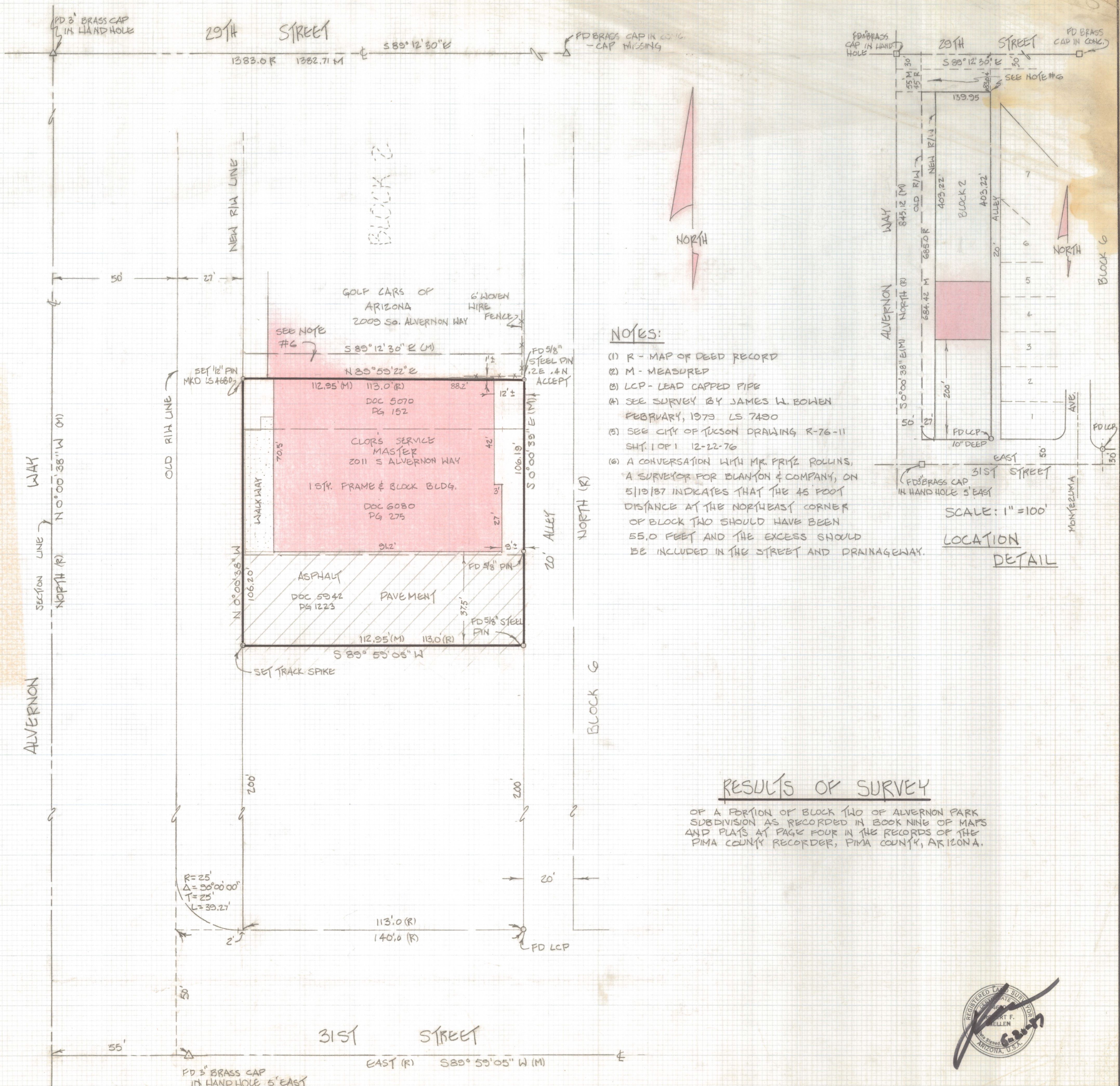


DISCLAIMER:

This unrecorded Record of Survey was donated to the City of Tucson. The City of Tucson provides this data for your personal use "as is." Additionally, the City of Tucson provides this information with the understanding that it is not guaranteed to be accurate, correct or complete and conclusions drawn from such information are the responsibility of the user.



NOTES:

- (1) R - MAP OF DEED RECORD
- (2) M - MEASURED
- (3) LCP - LEAD CAPPED PIPE
- (4) SEE SURVEY BY JAMES W. BOWEN FEBRUARY, 1973 LS 7450
- (5) SEE CITY OF TUCSON DRAWING R-76-11 SH. 1 OF 1 12-22-76
- (6) A CONVERSATION WITH MR. FRIZ ROLLINS, A SURVEYOR FOR BLANTON & COMPANY, ON 5/19/87 INDICATES THAT THE 45 FOOT DISTANCE AT THE NORTHEAST CORNER OF BLOCK TWO SHOULD HAVE BEEN 55.0 FEET AND THE EXCESS SHOULD BE INCLUDED IN THE STREET AND DRAINAGEWAY.

SCALE: 1" = 100'
 LOCATION
 DETAIL

RESULTS OF SURVEY

OF A PORTION OF BLOCK TWO OF ALVERNON PARK SUBDIVISION AS RECORDED IN BOOK NINE OF MAPS AND PLATS AT PAGE FOUR IN THE RECORDS OF THE PIMA COUNTY RECORDER, PIMA COUNTY, ARIZONA.



ROBERT F. MELLEN
 REGISTERED LAND SURVEYOR
 TUCSON, ARIZONA
 JOB 87-66