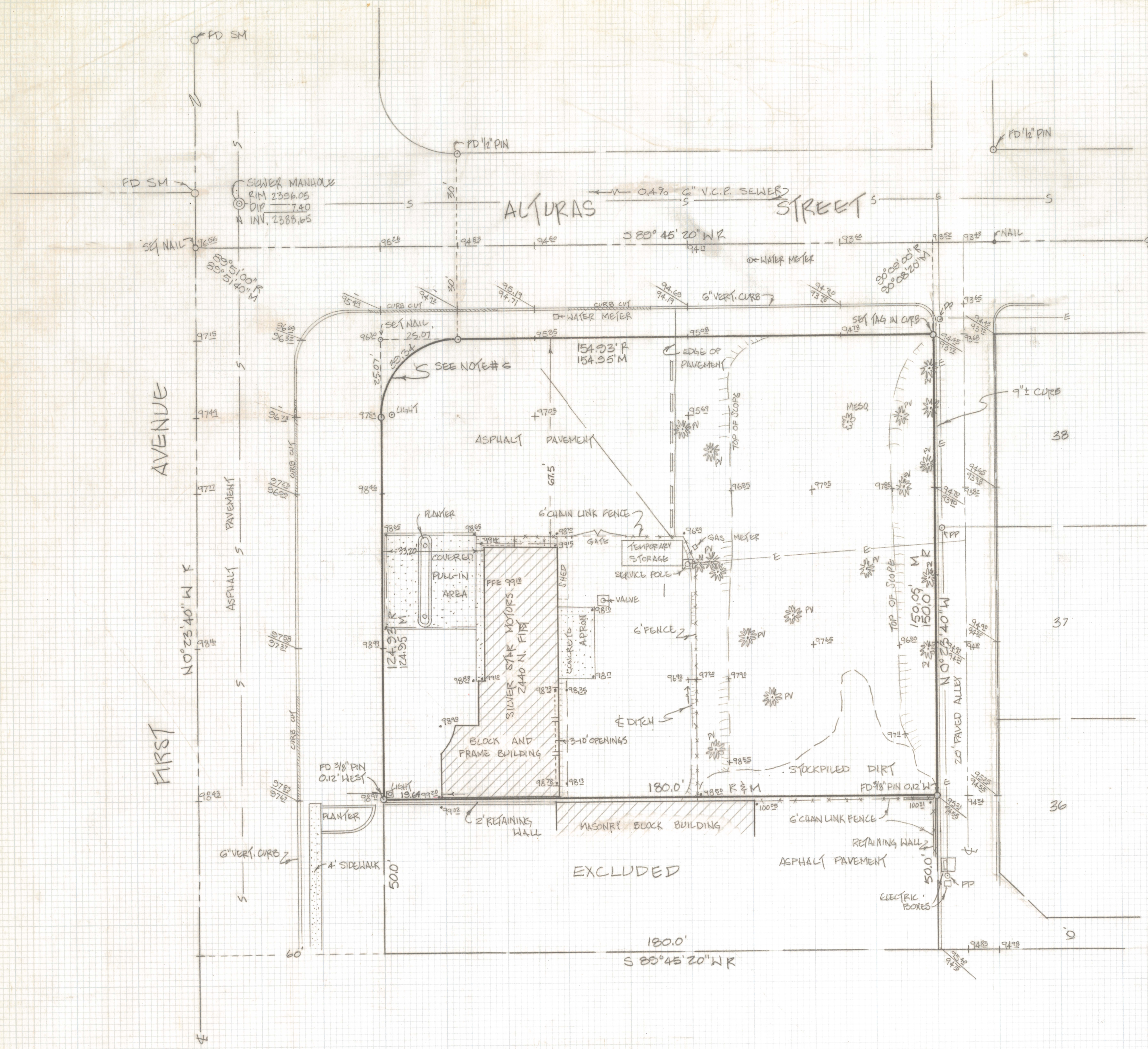


DISCLAIMER:

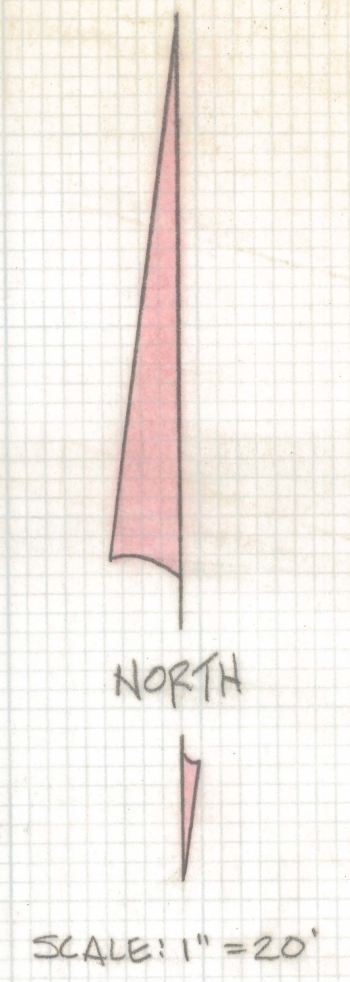
This unrecorded Record of Survey was donated to the City of Tucson. The City of Tucson provides this data for your personal use "as is." Additionally, the City of Tucson provides this information with the understanding that it is not guaranteed to be accurate, correct or complete and conclusions drawn from such information are the responsibility of the user.



NOTES:

- (1) O - INDICATES 1/2" PIN MED. LS 4680 UNLESS NOTED
- (2) R - MAP OR DEED RECORD
- (3) M - MEASURED
- (4) THE EASTERN PORTION OF THIS LOT APPEARS TO HAVE BEEN FILLED
- (5) BENCHMARK DATUM - CITY OF TUCSON PLAN I-593 SHEET 1 INVERT OF SEWER MANHOLE 151 AVENUE AND ALURAS STREET ELEV. = 2388.65
- (6) CURVE DATA

RAPIDS	25.0'
DELTA	90° 08' 00"
LENGTH	39.34'
TANGENT	25.07'
CHORD	35.40'



RESULTS OF SURVEY

OF LOT 1 OF DOS CALLES ADDITION AS RECORDED IN BOOK 11 OF MAPS AND PLATS AT PAGE 75 IN THE OFFICE OF THE PIMA COUNTY RECORDER, PIMA COUNTY, ARIZONA, EXCEPT THE SOUTH 50 FEET THEREOF.



ROBERT F. MELLEN
 REGISTERED LAND SURVEYOR
 TUCSON, ARIZONA
 JOB 87-101