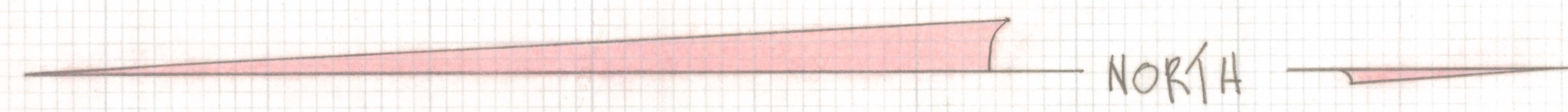


DISCLAIMER:

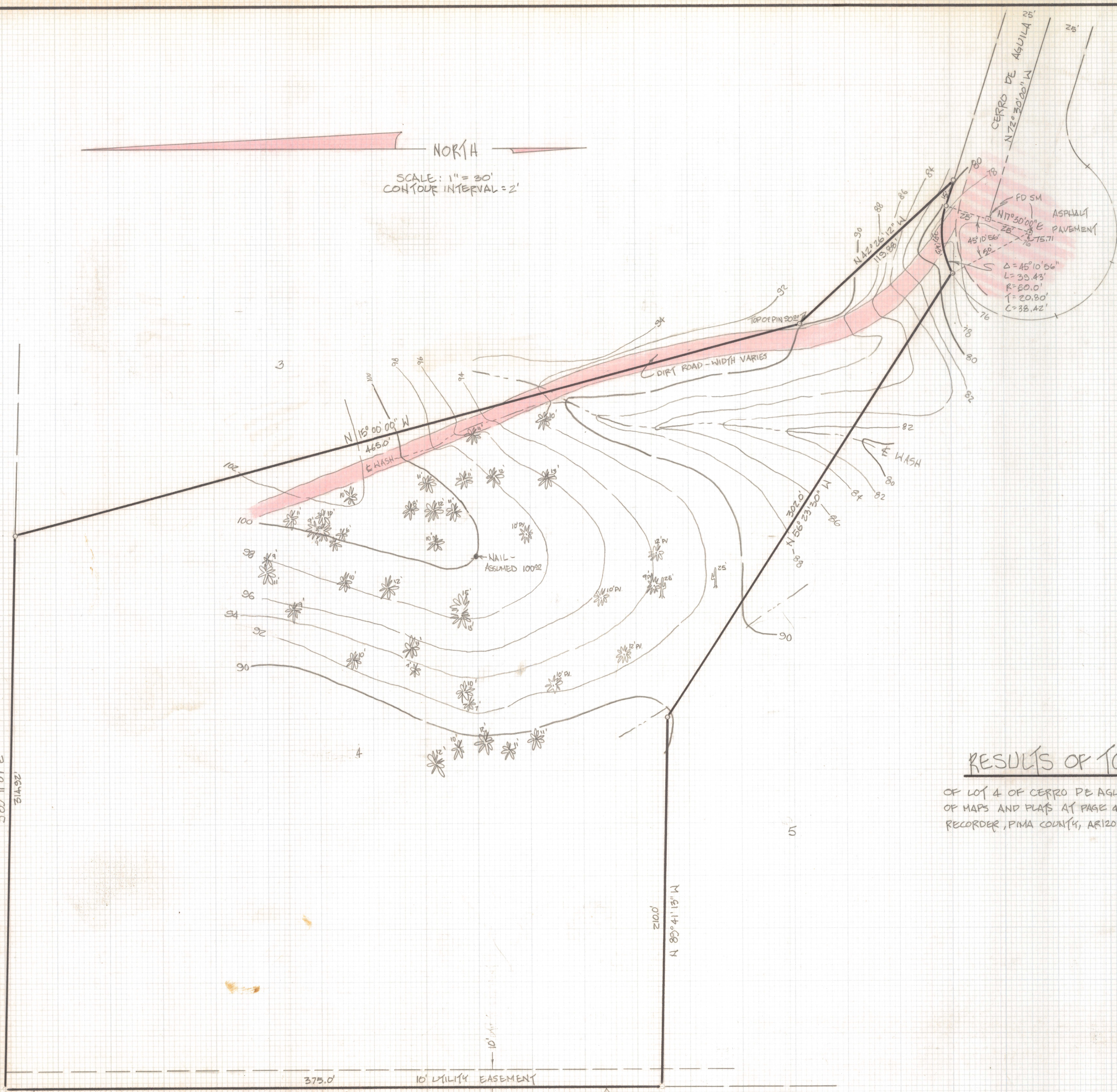
This unrecorded Record of Survey was donated to the City of Tucson. The City of Tucson provides this data for your personal use "as is." Additionally, the City of Tucson provides this information with the understanding that it is not guaranteed to be accurate, correct or complete and conclusions drawn from such information are the responsibility of the user.



SCALE: 1" = 30'
CONTOUR INTERVAL = 2'

NOTES:

- (1) NO BOUNDARY SURVEYED - TOPO ONLY
- (2) ○ INDICATES PD 1/2" PIN
- (3) * INDICATES PALOVERDE TREE & HEIGHT



RESULTS OF TOPOGRAPHICAL SURVEY

OF LOT 4 OF CERRO DE AGUILA SUBDIVISION AS RECORDED IN BOOK 21 OF MAPS AND PLATS AT PAGE 44 IN THE OFFICE OF THE PIMA COUNTY RECORDER, PIMA COUNTY, ARIZONA.

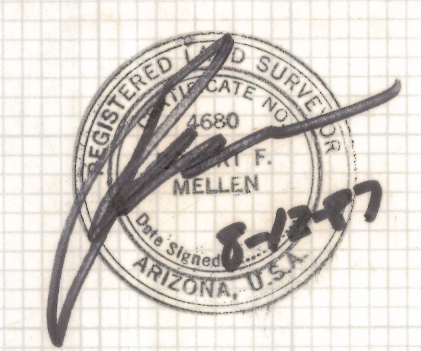
UNSUBDIVIDED

588° 11' 07" E
314.82'

373.0' 10' UTILITY EASEMENT
N 0° 18' 47" W

210.0' N 89° 41' 13" W

FLECHA CAIDA RANCH ESTATES AMENDED
BOOK 11 PAGE 74 MAPS & PLATS
REC. MARCH 1956



ROBERT P. MELLEN
REGISTERED LAND SURVEYOR
TUCSON, ARIZONA
205 27-112