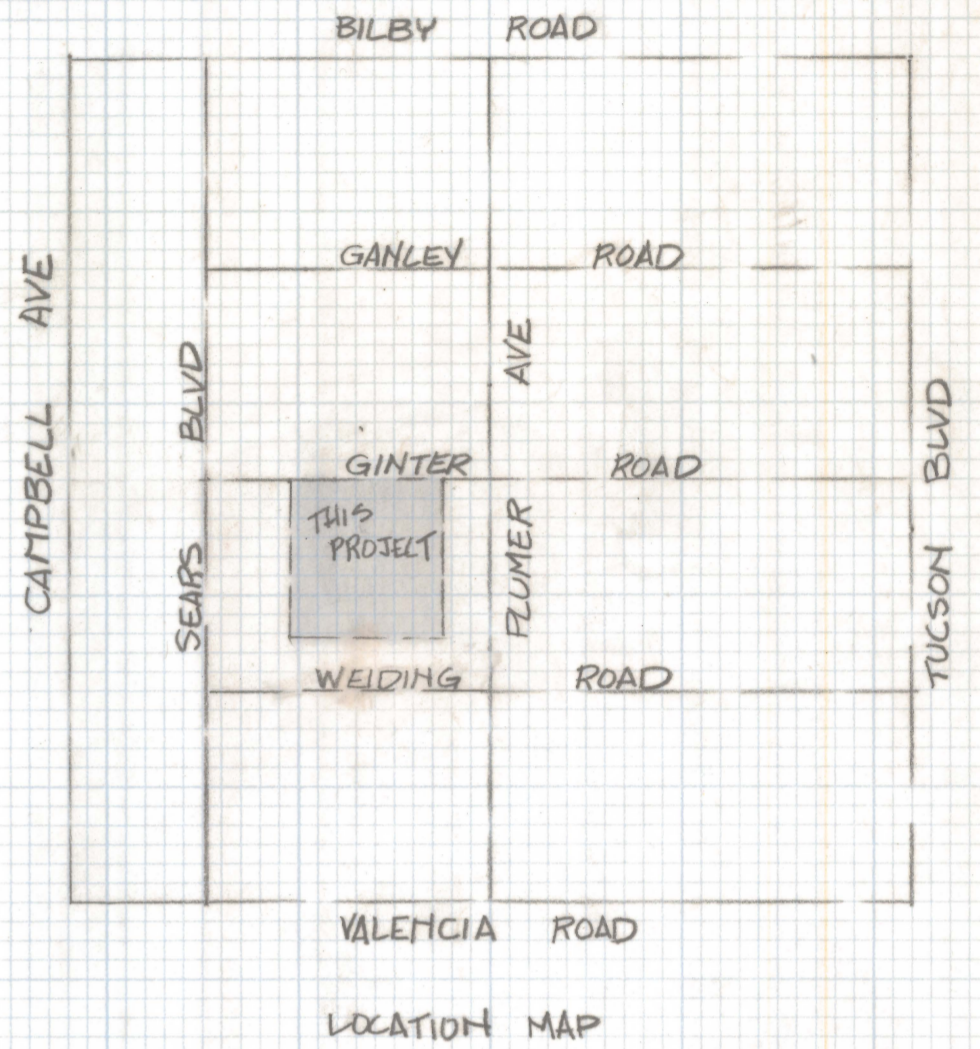
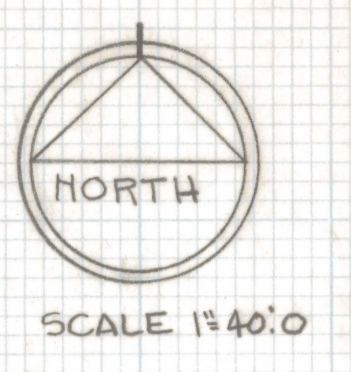
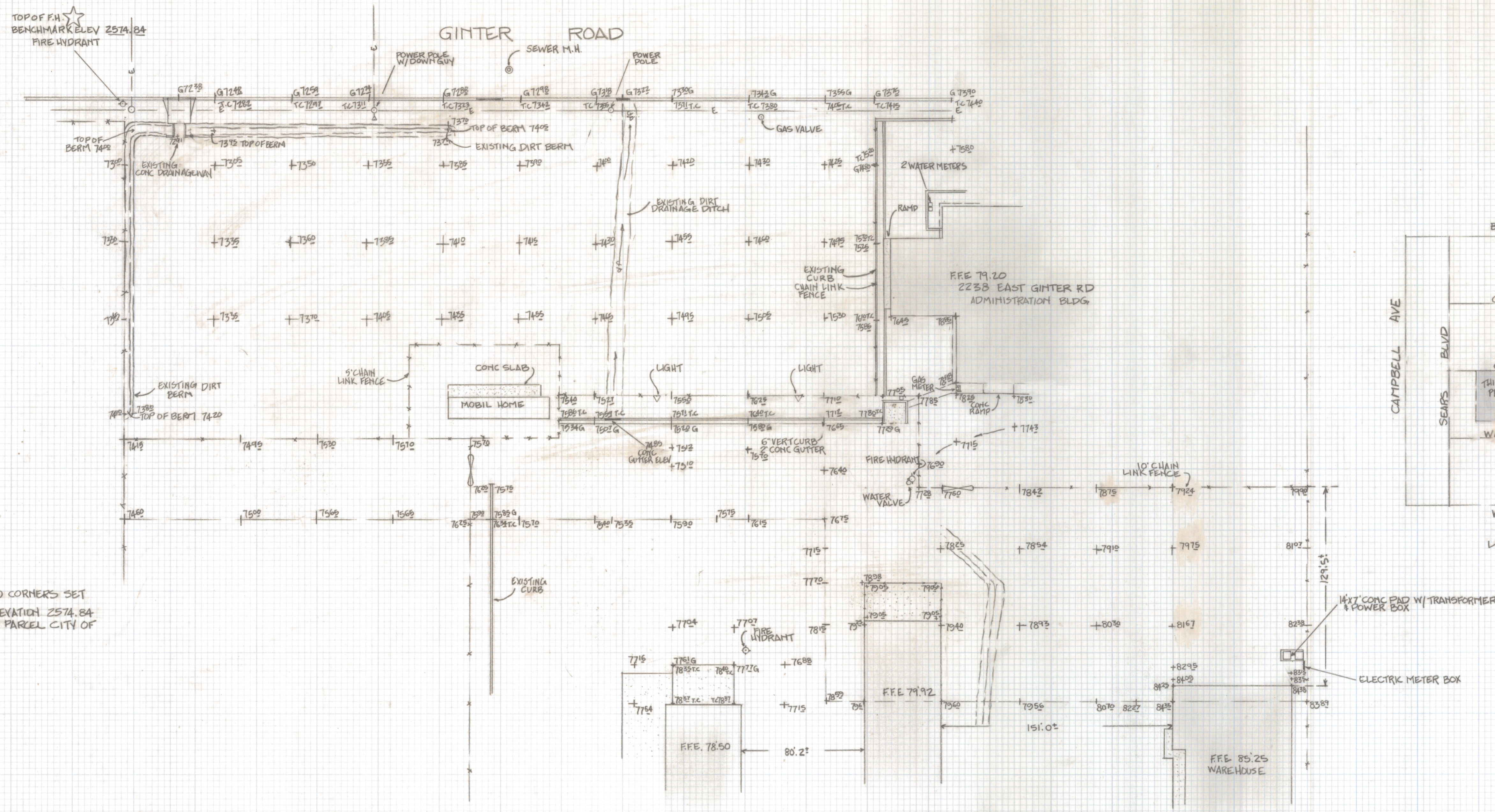


# **DISCLAIMER:**

**This unrecorded Record of Survey was donated to the City of Tucson. The City of Tucson provides this data for your personal use "as is." Additionally, the City of Tucson provides this information with the understanding that it is not guaranteed to be accurate, correct or complete and conclusions drawn from such information are the responsibility of the user.**



- NOTES**
- (1) THIS IS NOT A BOUNDARY SURVEY NO CORNERS SET
  - (2) BENCHMARK TOP OF FIRE HYDRANT ELEVATION 2574.84 AT NORTHWEST CORNER OF SUBJECT PARCEL CITY OF TUCSON DATUM

**TOPOGRAPHICAL SURVEY**

PURPOSED ADDITION TO ADMINISTRATION BUILDING AND WAREHOUSE FOR SUNNYSIDE SCHOOL DISTRICT #12 AT 2238 EAST GINTER ROAD PART OF LOTS 169 AND 170 LOS RANCHITOS #4 RECORDED IN BOOK OF MAPS AND PLATS AT PAGE 84 IN THE OFFICE OF THE PIMA COUNTY RECORDER PIMA COUNTY, ARIZONA



ROBERT F. MELLEM  
REGISTERED LAND SURVEYOR  
TUCSON, ARIZONA  
JOB# 87-117