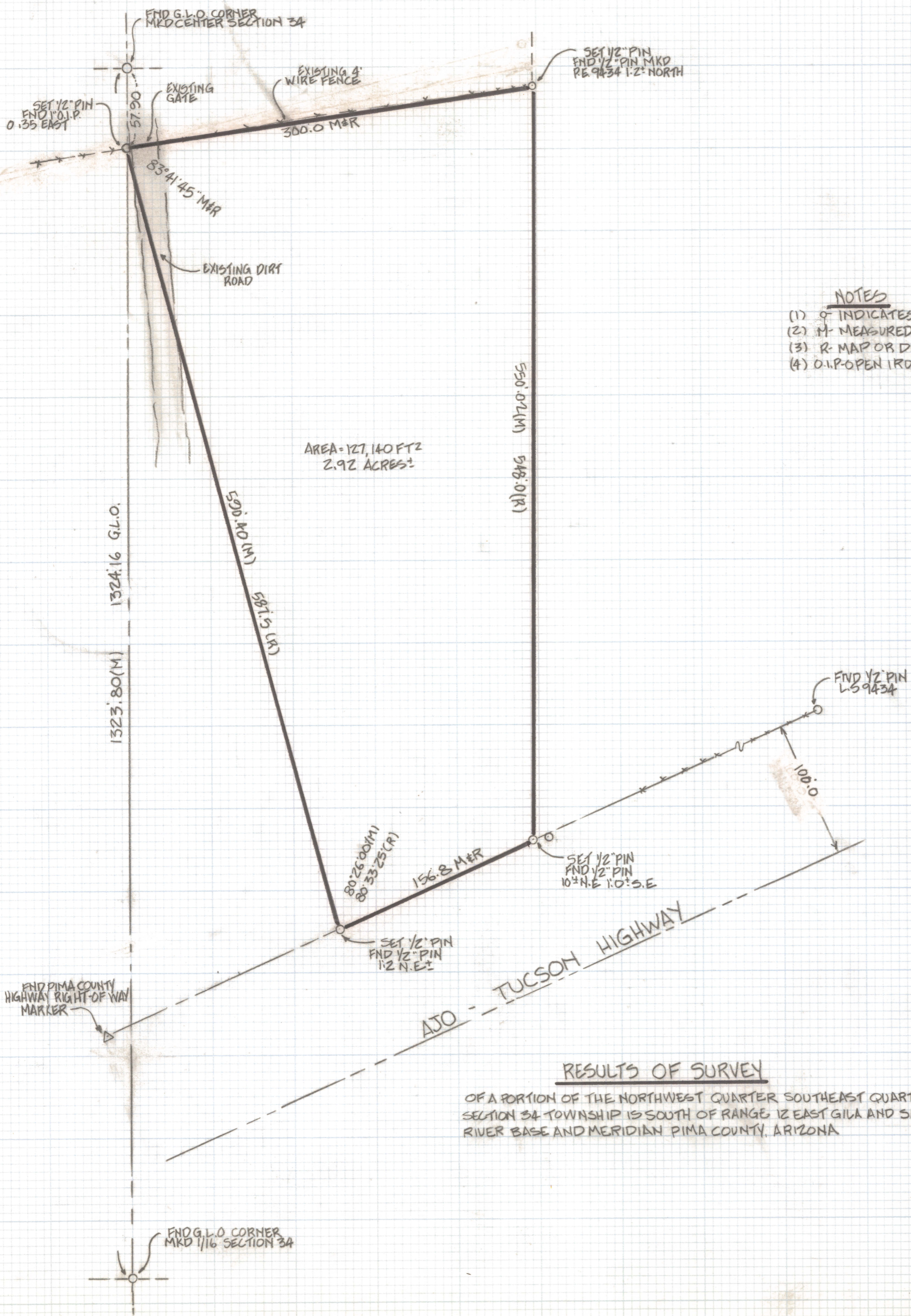


# **DISCLAIMER:**

**This unrecorded Record of Survey was donated to the City of Tucson. The City of Tucson provides this data for your personal use "as is." Additionally, the City of Tucson provides this information with the understanding that it is not guaranteed to be accurate, correct or complete and conclusions drawn from such information are the responsibility of the user.**



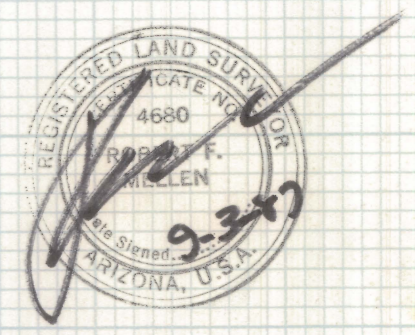
- NOTES**
- (1) ' indicates SET 1/2" PIN MKD L.S. 4680 UNLESS NOTED
  - (2) M- MEASURED
  - (3) R- MAP OR DEED RECORD
  - (4) O.I.P- OPEN IRON PIPE

AREA = 127,140 FT<sup>2</sup>  
2.92 ACRES ±

AJO - TUCSON HIGHWAY

**RESULTS OF SURVEY**

OF A PORTION OF THE NORTHWEST QUARTER SOUTHEAST QUARTER SECTION 34 TOWNSHIP 15 SOUTH OF RANGE 12 EAST GILA AND SALT RIVER BASE AND MERIDIAN PIMA COUNTY, ARIZONA



ROBERT F. MELLE  
REGISTERED LAND SURVEYOR  
TUCSON ARIZONA  
JOB# 87-121