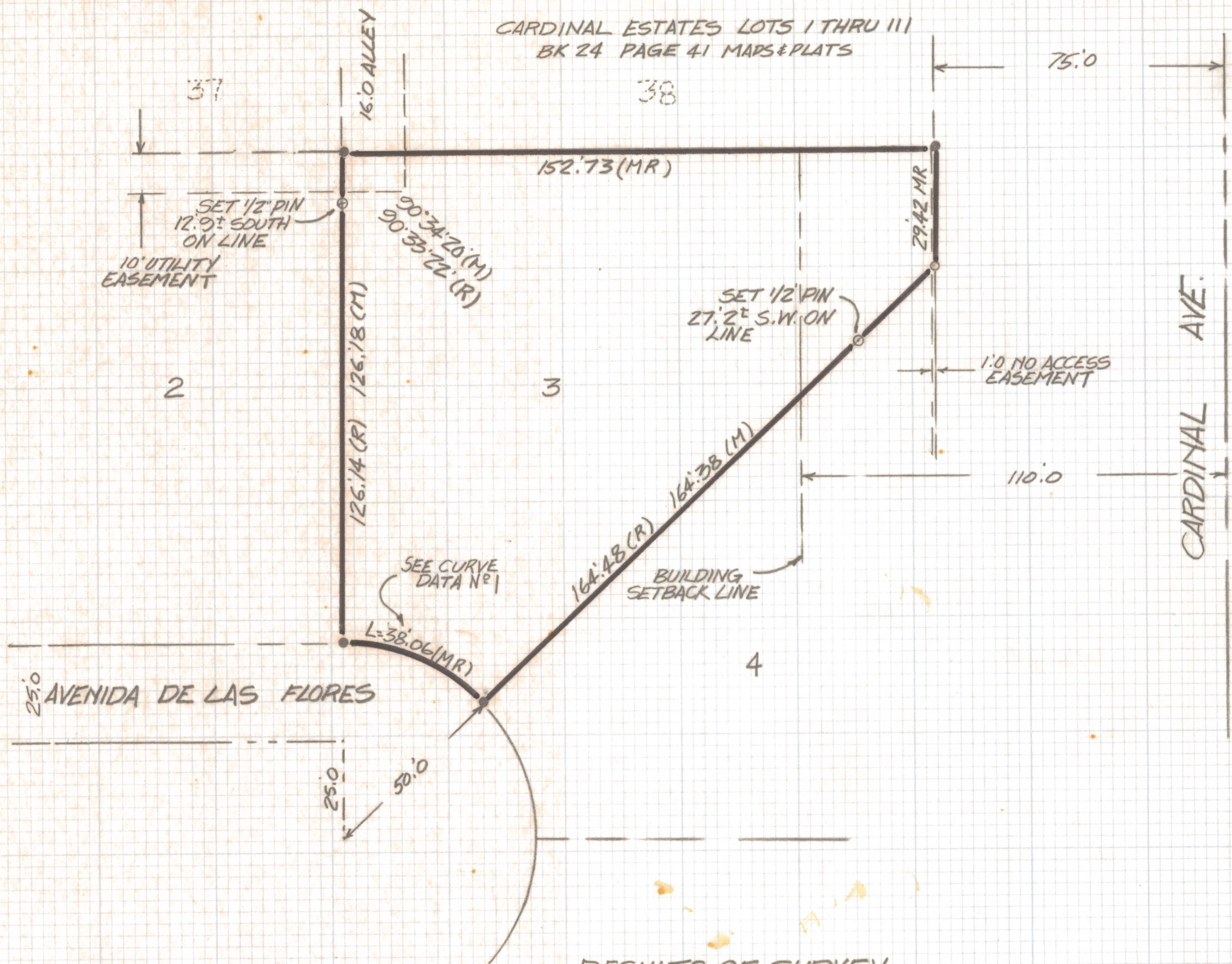
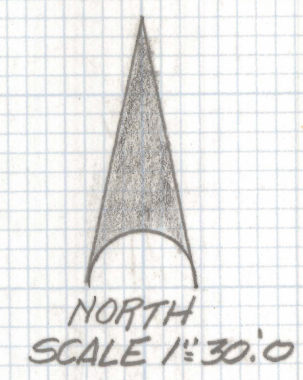


DISCLAIMER:

This unrecorded Record of Survey was donated to the City of Tucson. The City of Tucson provides this data for your personal use "as is." Additionally, the City of Tucson provides this information with the understanding that it is not guaranteed to be accurate, correct or complete and conclusions drawn from such information are the responsibility of the user.



CARDINAL ESTATES LOTS I THRU III
BK 24 PAGE 41 MAPS & PLATS



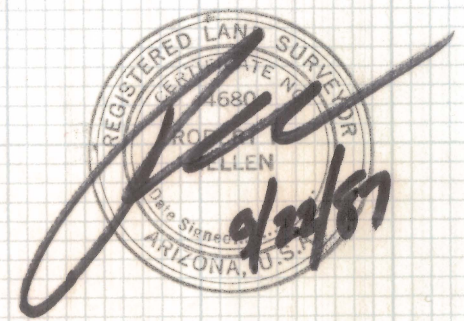
NOTES

- (1) ○ INDICATES SET 1/2" PIN MKD L.S. 4680 UNLESS NOTED
- (2) ● INDICATES FOUND PIN UNLESS NOTED
- (3) M - MEASURED
- (4) R - MAP OR DEED RECORD

CURVE DATA					
NO	RADIUS	DELTA	TANGENT	LENGTH	CHORD
1	50.0	43°36'59"	20.0	38.06	37.15

RESULTS OF SURVEY

OF LOT 3 MISSION RIDGE RECORDED IN BOOK 33 OF
MAPS AND PLATS AT PAGE 19 IN THE OFFICE OF THE
PIMA COUNTY RECORDER PIMA COUNTY ARIZONA



ROBERT F. MELLEN
REGISTERED LAND SURVEYOR
TUCSON, ARIZONA
JOB# 87-132