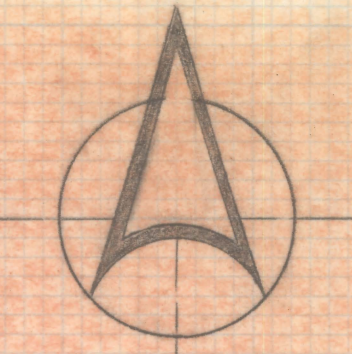


# **DISCLAIMER:**

**This unrecorded Record of Survey was donated to the City of Tucson. The City of Tucson provides this data for your personal use "as is." Additionally, the City of Tucson provides this information with the understanding that it is not guaranteed to be accurate, correct or complete and conclusions drawn from such information are the responsibility of the user.**



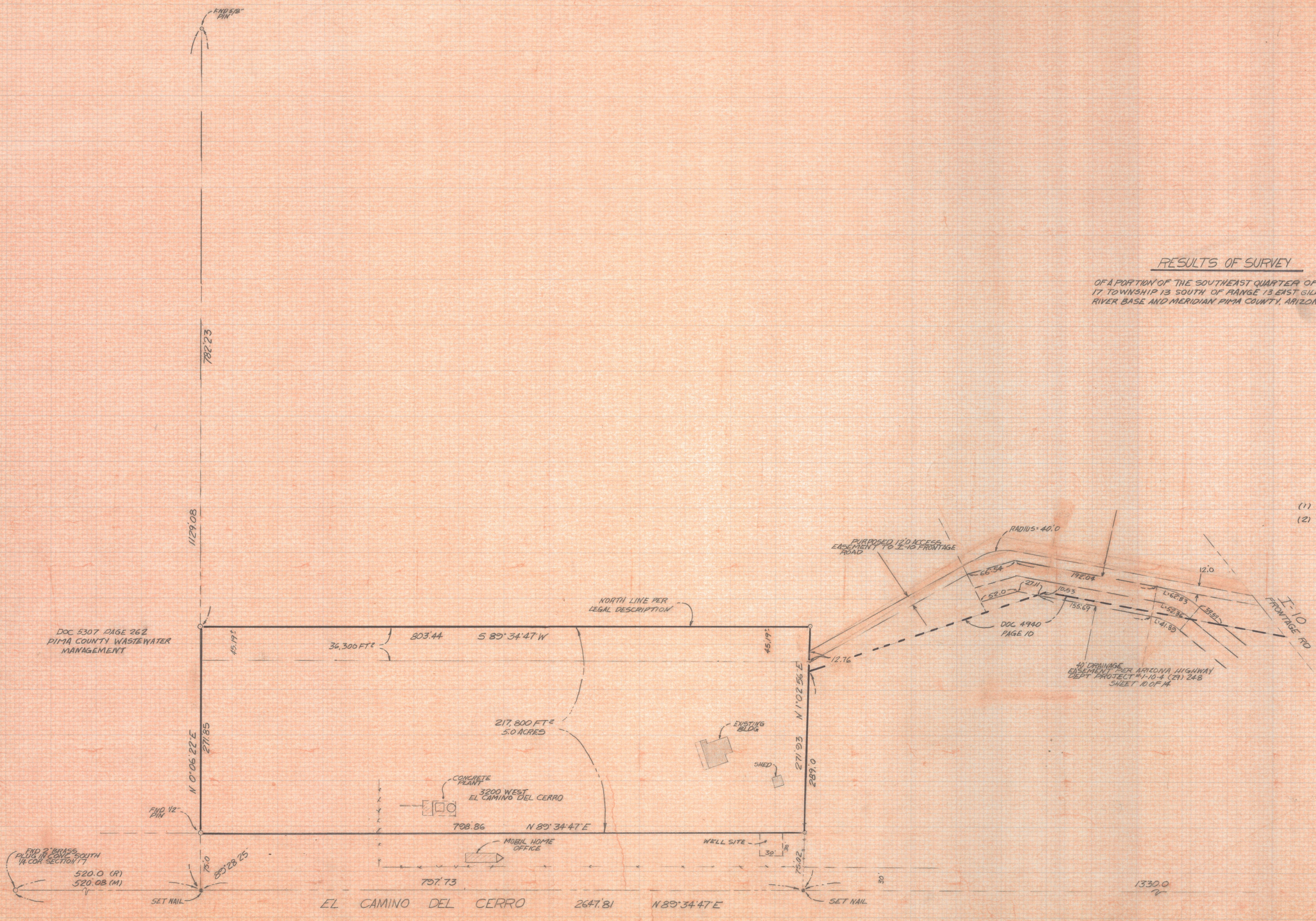
NORTH  
SCALE 1"=60.0'

RESULTS OF SURVEY

OF A PORTION OF THE SOUTHEAST QUARTER OF SECTION 17, TOWNSHIP 13 SOUTH OF RANGE 13 EAST GILA AND SALT RIVER BASE AND MERIDIAN PIMA COUNTY, ARIZONA

NOTES

- (1) PINS WILL BE SET AFTER CARS REMOVED
- (2) REFERENCE PIMA COUNTY WASTEWATER SURVEY FIELD BOOK 87-2 PAGE 40-41



DOC 5307 PAGE 262  
PIMA COUNTY WASTEWATER  
MANAGEMENT

782.23

1129.08

271.85

708.86

EL CAMINO DEL CERRO 2647.81

N 89° 34' 47" E

271.93

N 1° 02' 56" E

271.93

289.0

PURPOSED 12'0 ACCESS  
EASEMENT TO I-10 FRONTAGE  
ROAD

RADIUS = 40.0'

DOC 4990  
PAGE 10

40' DRAINAGE  
EASEMENT PER ARIZONA HIGHWAY  
DEPT PROJECT #1-10-4 (CA) 24.8  
SHEET 10 OF 14

I-10  
FRONTAGE RD

FIND 2" BRASS  
PLUG IN CORNER  
IN COR SECTION 17  
520.0 (CR)  
520.08 (M)

SET NAIL

SET NAIL

FIND 2" BRASS  
PLUG IN CORNER  
IN COR SECTION 17  
17.15  
201.21



ROBERT F. MELIEN  
REGISTERED LAND SURVEYOR  
TUCSON, ARIZONA  
JOB # 87-134

NORTH  
SCALE 1"=60.0

PROPERTY  
LINE

☺ CURVE DATA  
RADIUS=100.0  
DELTA=30°00'00"  
TANGENT=26.79  
CHORD=51.76  
LENGTH=52.36

— SKETCH —  
OF  
DRAINAGEWAY EASEMENT NEAR CAMINO  
DEL CERRO AND I-10, PART OF SOUTHEAST  
QUARTER SECTION 17 TOWNSHIP 13 SOUTH  
OF RANGE 13 EAST, G.S.R.B #M PIMA  
COUNTY, ARIZONA



ROBERT F. MELLEN  
REGISTERED LAND SURVEYOR  
TUCSON, ARIZONA  
JOB # 87-134

30  
CAMINO DEL CERRO