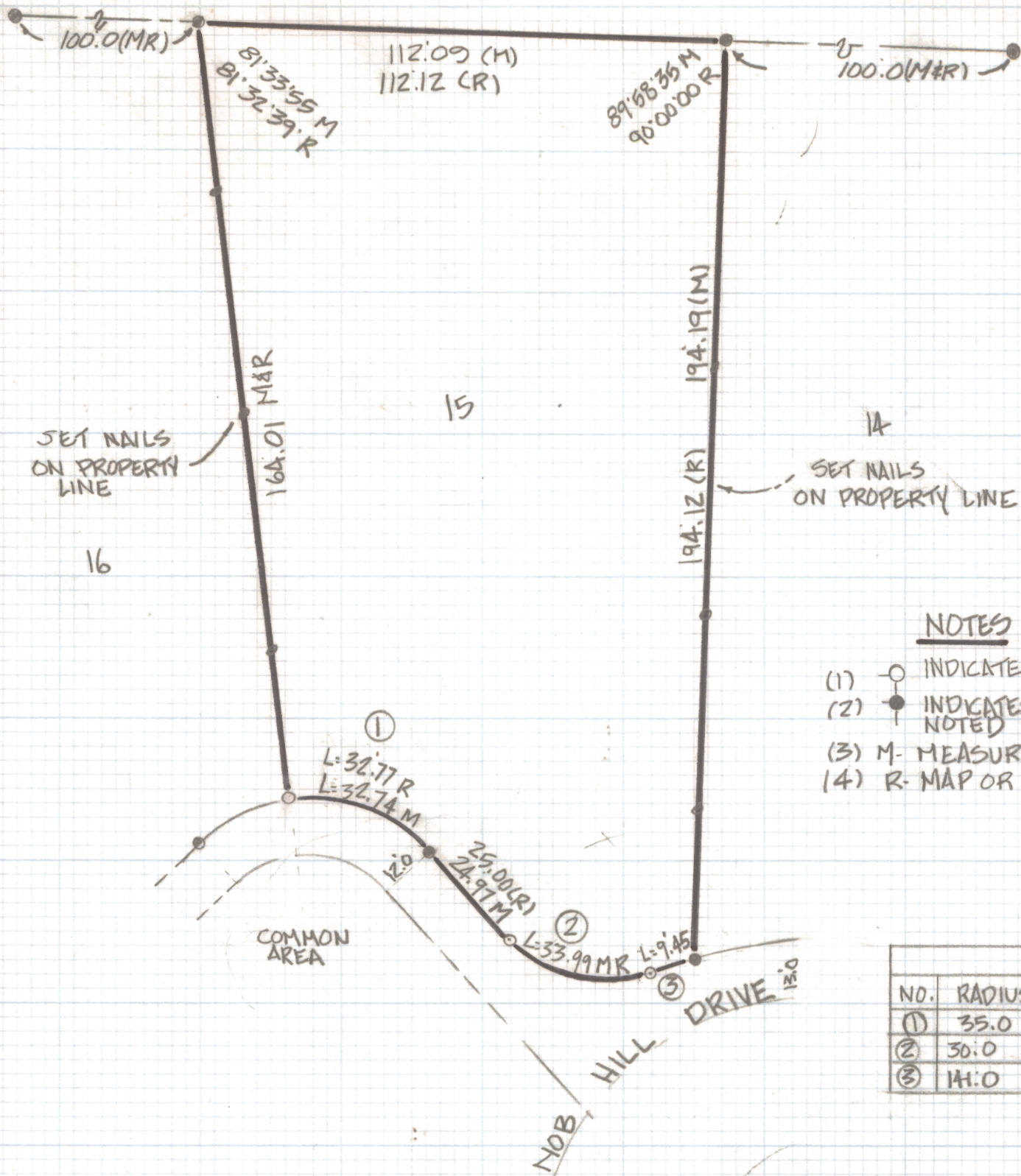


DISCLAIMER:

This unrecorded Record of Survey was donated to the City of Tucson. The City of Tucson provides this data for your personal use "as is." Additionally, the City of Tucson provides this information with the understanding that it is not guaranteed to be accurate, correct or complete and conclusions drawn from such information are the responsibility of the user.

GOLF COURSE



NORTH
SCALE 1"=30.0'

NOTES

- (1) ○ INDICATES FOUND "X" IN CURB UNLESS NOTED
- (2) ● INDICATES FOUND 5/8" PIN MKD L.S. 10171 UNLESS NOTED
- (3) M- MEASURED
- (4) R- MAP OR DEED RECORD

CURVE DATA					
NO.	RADIUS	DELTA	TANGENT	LENGTH	CHORD
①	35.0	53°35'51"	17.68	32.74	31.56
②	30.0	64°54'51"	19.08	33.99	32.20
③	141.0	3°50'27"	4.73	9.45	9.45

RESULTS OF SURVEY

OF LOT 15 NOB HILL ESTATES RESUBDIVISION RECORDED IN BOOK 35 OF MAPS AND PLATS AT PAGE 30 IN THE OFFICE OF THE PIMA COUNTY RECORDER PIMA COUNTY ARIZONA



ROBERT F. MELLEN
REGISTERED LAND SURVEYOR
TUCSON, ARIZONA
JOB# 87-139