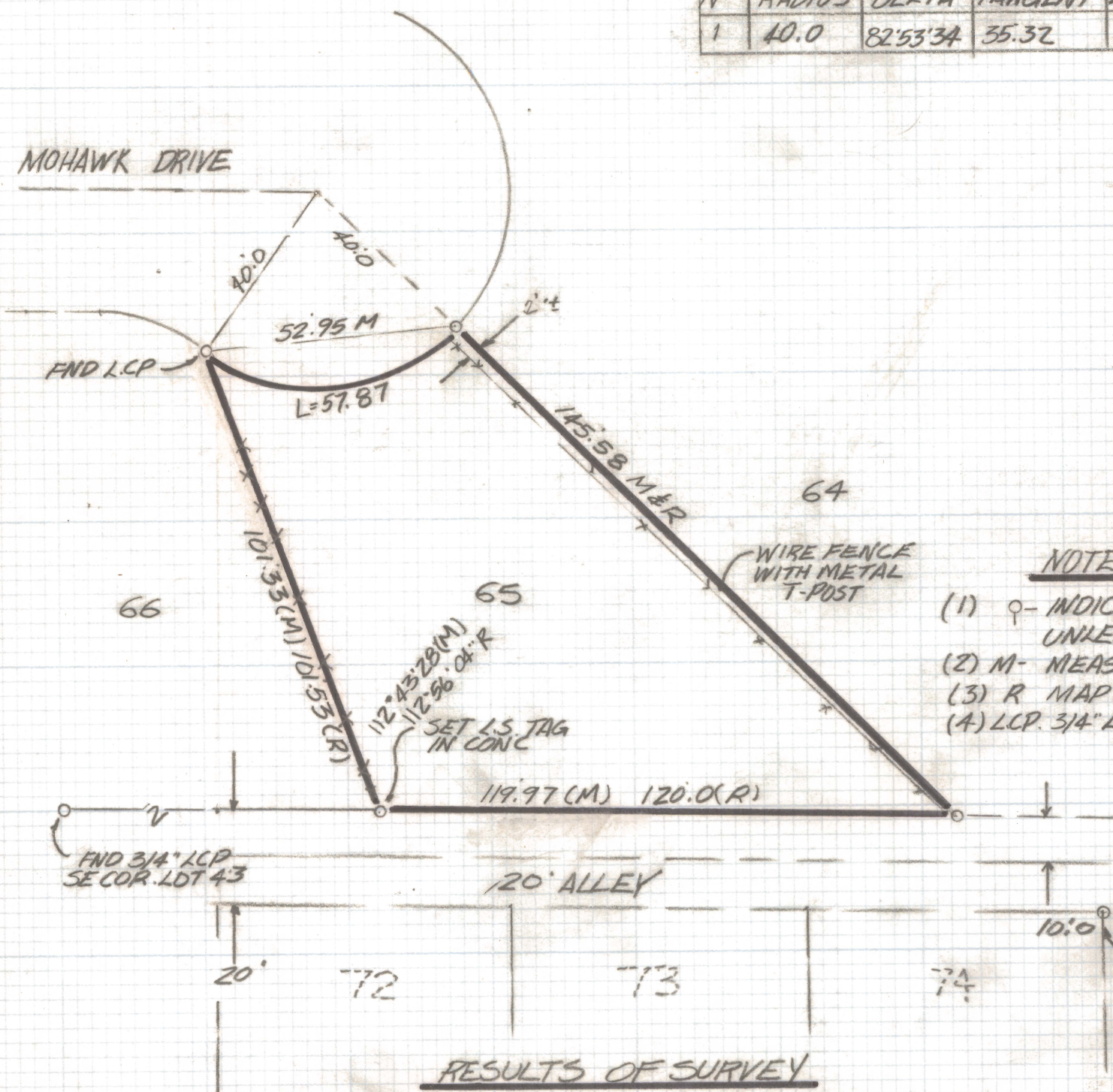


DISCLAIMER:

This unrecorded Record of Survey was donated to the City of Tucson. The City of Tucson provides this data for your personal use "as is." Additionally, the City of Tucson provides this information with the understanding that it is not guaranteed to be accurate, correct or complete and conclusions drawn from such information are the responsibility of the user.

CURVE DATA					
N ^o	RADIUS	DELTA	TANGENT	LENGTH	CHORD
1	40.0	82°53'34"	35.32	57.87	52.95

NORTH
SCALE 1"=30.0'



NOTES

- (1) \circ - INDICATES SET 1/2" PIN MKD L.S. 4680 UNLESS NOTED
- (2) M - MEASURED
- (3) R - MAP OR DEED RECORD
- (4) L.C.P. 3/4" LEAD CAPPED PIPE

RESULTS OF SURVEY

OF LOT 65 RIVERSIDE GARDEN RECORDED IN BOOK 12 OF
MAPS AND PLATS AT PAGE 61 IN THE OFFICE OF THE PIMA
COUNTY RECORDER PIMA COUNTY ARIZONA



ROBERT F. MELLEN
REGISTERED LAND SURVEYOR
TUCSON, ARIZONA
JOB# 87-143

Z-2020-725