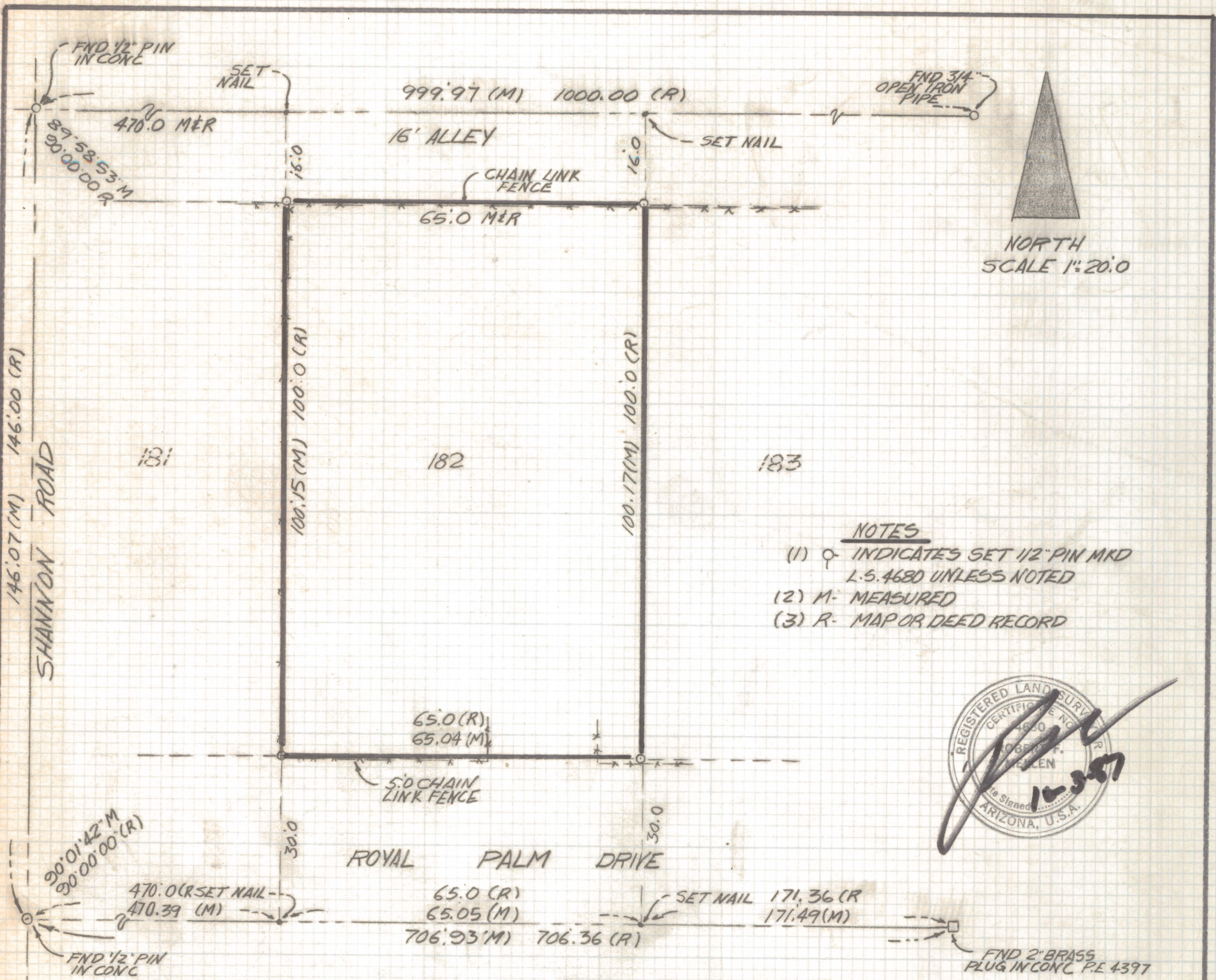


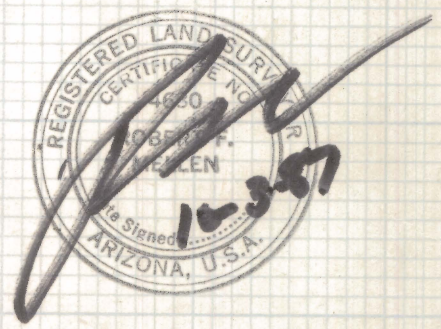
DISCLAIMER:

This unrecorded Record of Survey was donated to the City of Tucson. The City of Tucson provides this data for your personal use "as is." Additionally, the City of Tucson provides this information with the understanding that it is not guaranteed to be accurate, correct or complete and conclusions drawn from such information are the responsibility of the user.



NORTH
SCALE 1"=20.0'

- NOTES
- (1) ♀ INDICATES SET 1/2" PIN MKD L.S. 4680 UNLESS NOTED
 - (2) M- MEASURED
 - (3) R- MAP OR DEED RECORD



RESULTS OF SURVEY

OF LOT 182 PALMDALE SUBDIVISION RECORDED IN BOOK 14 OF MAPS AND PLATS AT PAGE 68 IN THE OFFICE OF THE PIMA COUNTY RECORDER PIMA COUNTY, ARIZONA

ROBERT F. MELLEN
REGISTERED LAND SURVEYOR
TUCSON, ARIZONA
JOB# 87-149