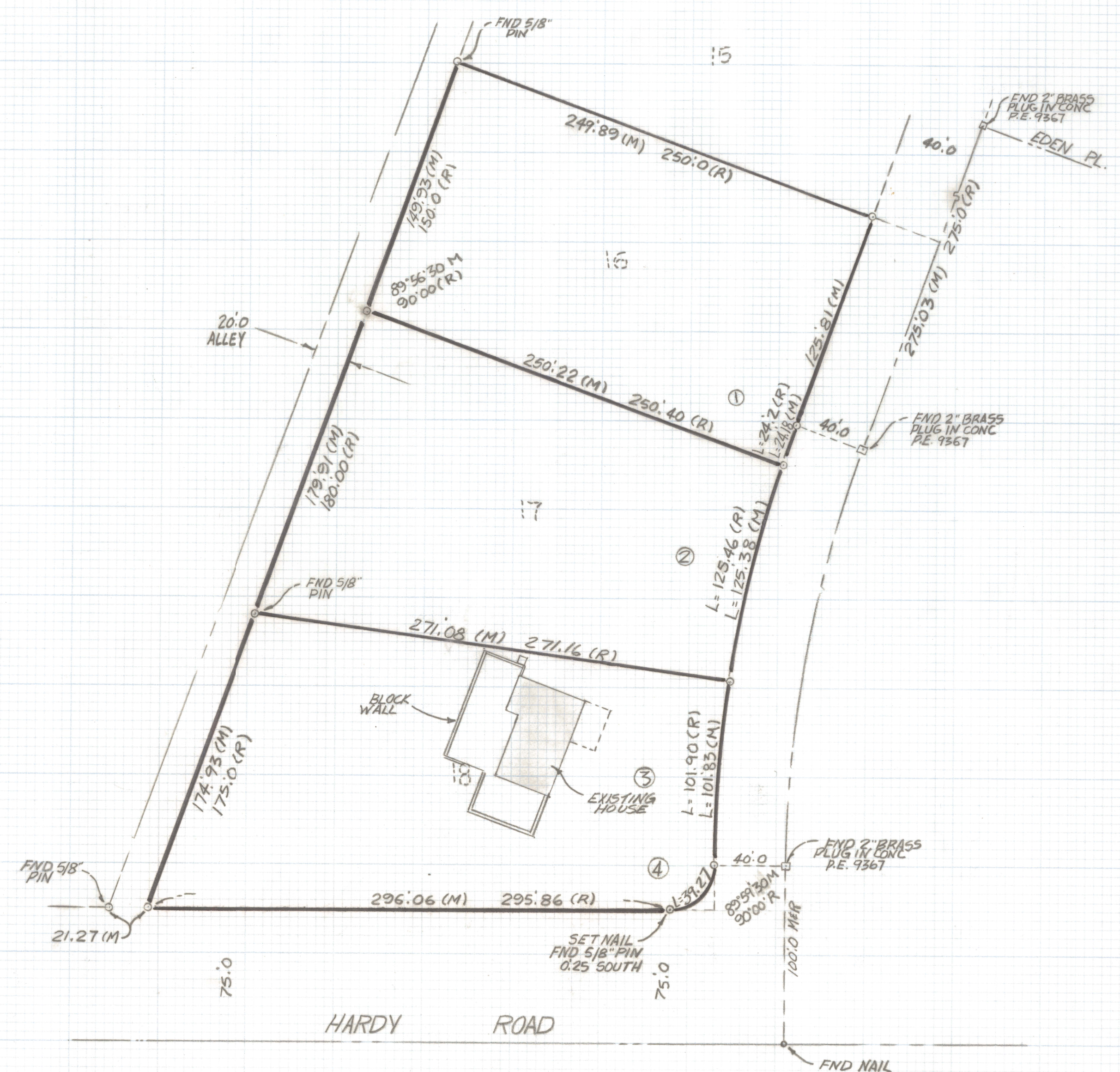
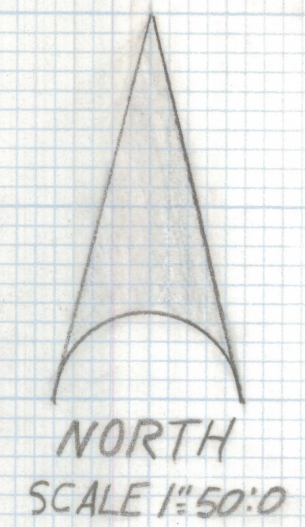


DISCLAIMER:

This unrecorded Record of Survey was donated to the City of Tucson. The City of Tucson provides this data for your personal use "as is." Additionally, the City of Tucson provides this information with the understanding that it is not guaranteed to be accurate, correct or complete and conclusions drawn from such information are the responsibility of the user.



CURVE DATA					
N ^o	RADIUS	DELTA	TANGENT	LENGTH	CHORD
1	724.74	1°54'42"	12.09	24.18	24.18
2	724.74	9°54'44"	62.85	125.38	125.22
3	724.74	8°03'01"	51.0	101.83	101.75
4	60'0	90°00'30"	25.0	39.27	35.36

- NOTES**
- (1) INDICATES SET 1/2" PIN MKD L.S. 4680 UNLESS NOTED
 - (2) M- MEASURED
 - (3) R- MAP OR DEED RECORD
 - (4) ① - SEE CURVE DATA

RESULTS OF SURVEY

OF LOTS 16, 17 AND 18 OF SHADOW MOUNTAIN ESTATES EAST
 RECORDED IN BOOK 14 OF MAPS AND PLATS AT PAGE 93 IN THE
 OFFICE OF THE PIMA COUNTY RECORDER PIMA COUNTY, ARIZONA



ROBERT F. MELLEN
 REGISTERED LAND SURVEYOR
 TUCSON, ARIZONA
 JOB# 87-157