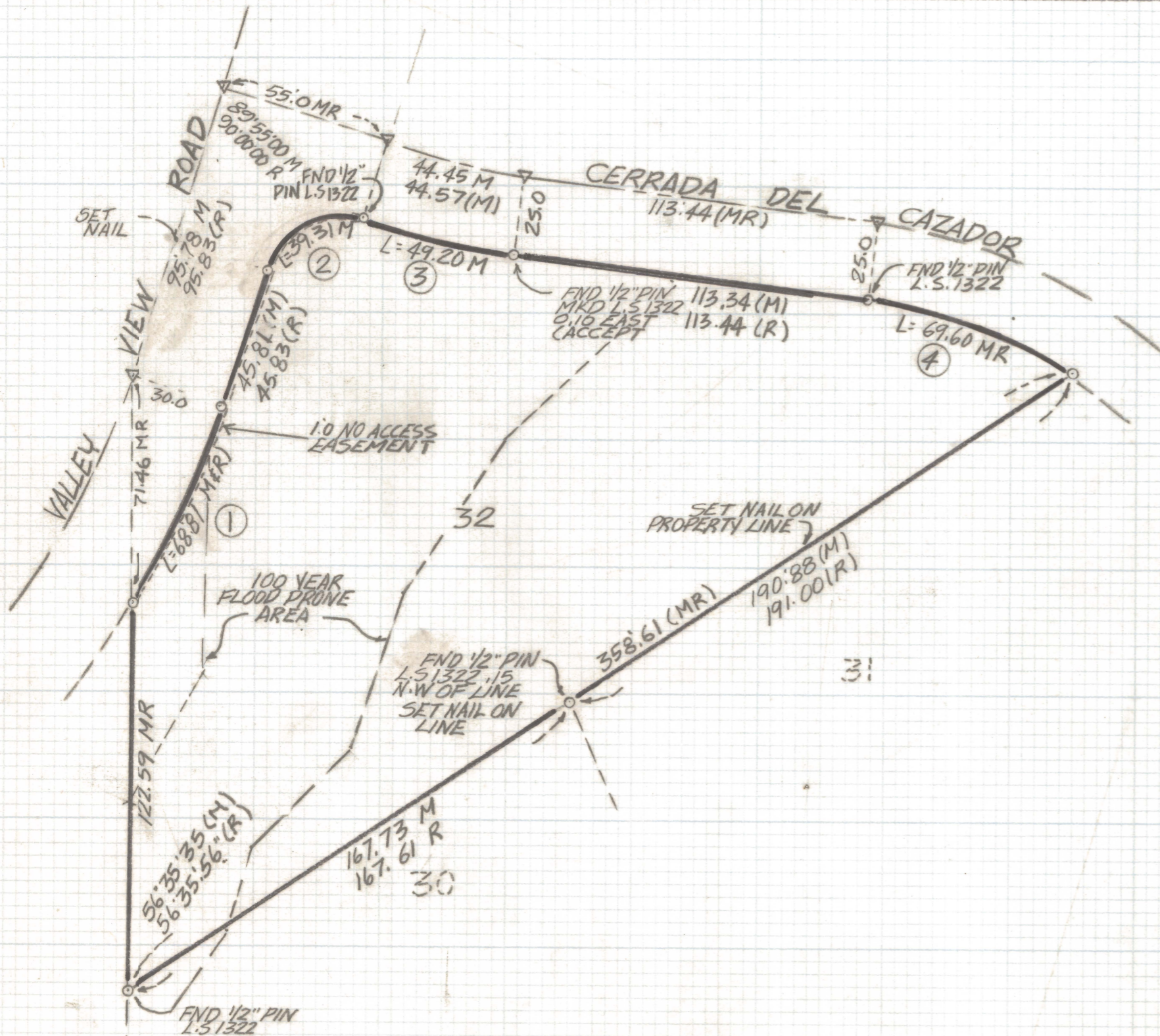


# **DISCLAIMER:**

**This unrecorded Record of Survey was donated to the City of Tucson. The City of Tucson provides this data for your personal use "as is." Additionally, the City of Tucson provides this information with the understanding that it is not guaranteed to be accurate, correct or complete and conclusions drawn from such information are the responsibility of the user.**



| CURVE DATA |        |          |         |        |       |
|------------|--------|----------|---------|--------|-------|
| NO         | RADIUS | DELTA    | TANGENT | LENGTH | CHORD |
| 1          | 280.0  | 14°04'47 | 34.58   | 68.81  | 68.63 |
| 2          | 25.0   | 90°05'00 | 25.04   | 39.31  | 35.38 |
| 3          | 265.0  | 10°38'16 | 24.67   | 49.20  | 49.13 |
| 4          | 155.0  | 25°43'40 | 35.40   | 69.60  | 69.02 |

NORTH  
SCALE 1"=40'

NOTES

- (1) q INDICATES SET 1/2" PIN MKD L.S. 4680 UNLESS NOTED
- (2) M- MEASURED
- (3) R- MAP OR DEED RECORD
- (A) Δ INDICATES FND 2" BRASS PLUG IN CONC MKD L.S. 1322

RESULTS OF SURVEY

OF LOT 32 LAS LOMAS DE CATALINA RECORDED IN BOOK 29 OF MAPS AND PLATS AT PAGE 79 IN THE OFFICE OF THE PIMA COUNTY RECORDER PIMA COUNTY, ARIZONA



ROBERT F. MELLEN  
REGISTERED LAND SURVEYOR  
TUCSON, ARIZONA  
JOB # 88-2