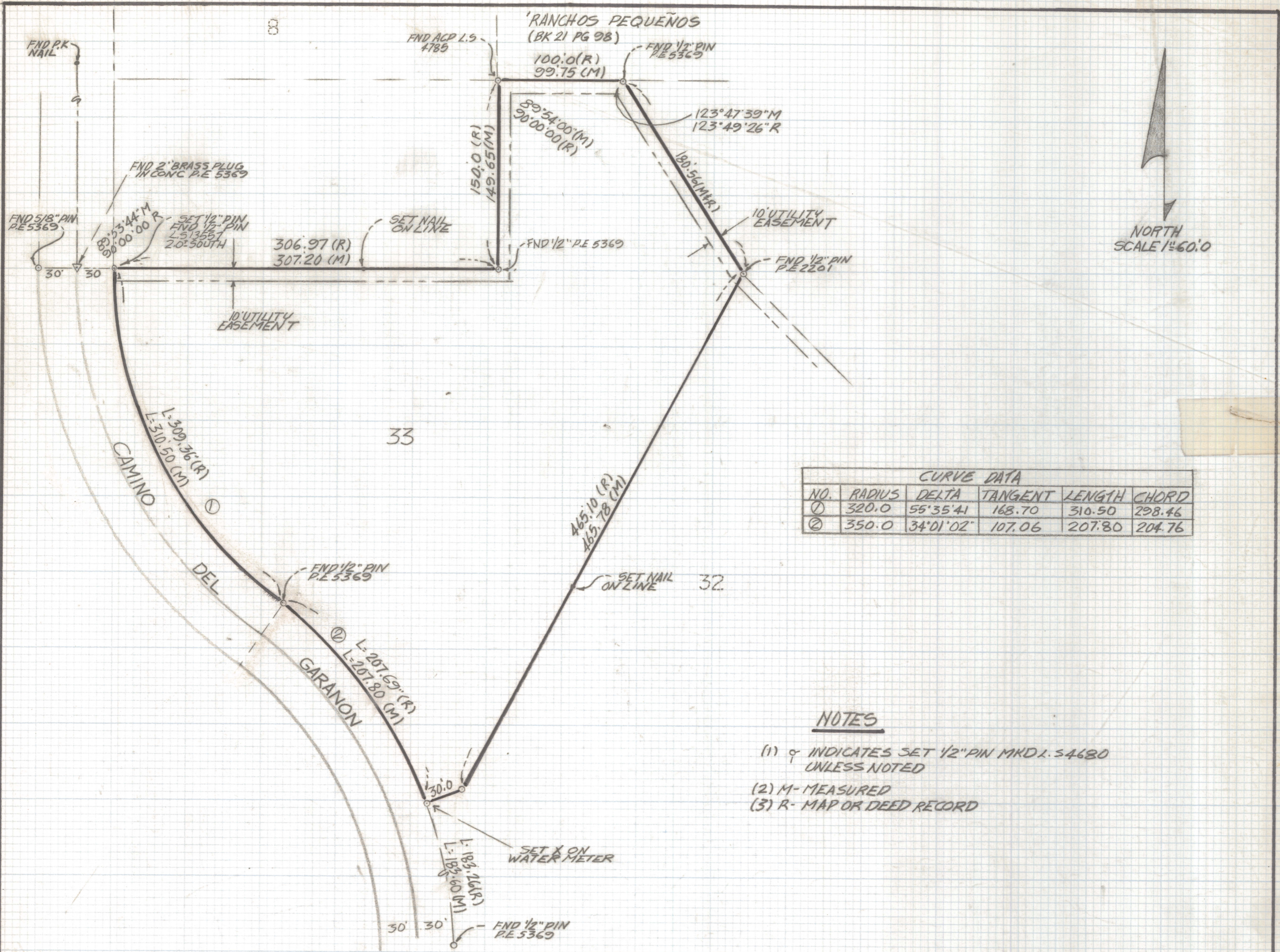


DISCLAIMER:

This unrecorded Record of Survey was donated to the City of Tucson. The City of Tucson provides this data for your personal use "as is." Additionally, the City of Tucson provides this information with the understanding that it is not guaranteed to be accurate, correct or complete and conclusions drawn from such information are the responsibility of the user.



NORTH
SCALE 1"=60.0'

CURVE DATA					
NO.	RADIUS	DELTA	TANGENT	LENGTH	CHORD
①	320.0	55°35'41"	168.70	310.50	298.46
②	350.0	34°01'02"	107.06	207.80	204.76

NOTES

- (1) ♀ INDICATES SET 1/2" PIN MKD L. 54680 UNLESS NOTED
- (2) M- MEASURED
- (3) R- MAP OR DEED RECORD

RESULTS OF SURVEY

OF LOT 33 ROCKING K RANCH ESTATES II RECORDED
IN BOOK 22 OF MAPS AND PLATS AT PAGE 68 IN THE OFFICE
OF THE PIMA COUNTY, RECORDER PIMA COUNTY, ARIZONA



ROBERT F. MELLEN
REGISTERED LAND SURVEYOR
TUCSON, ARIZONA
JOB # 88-4