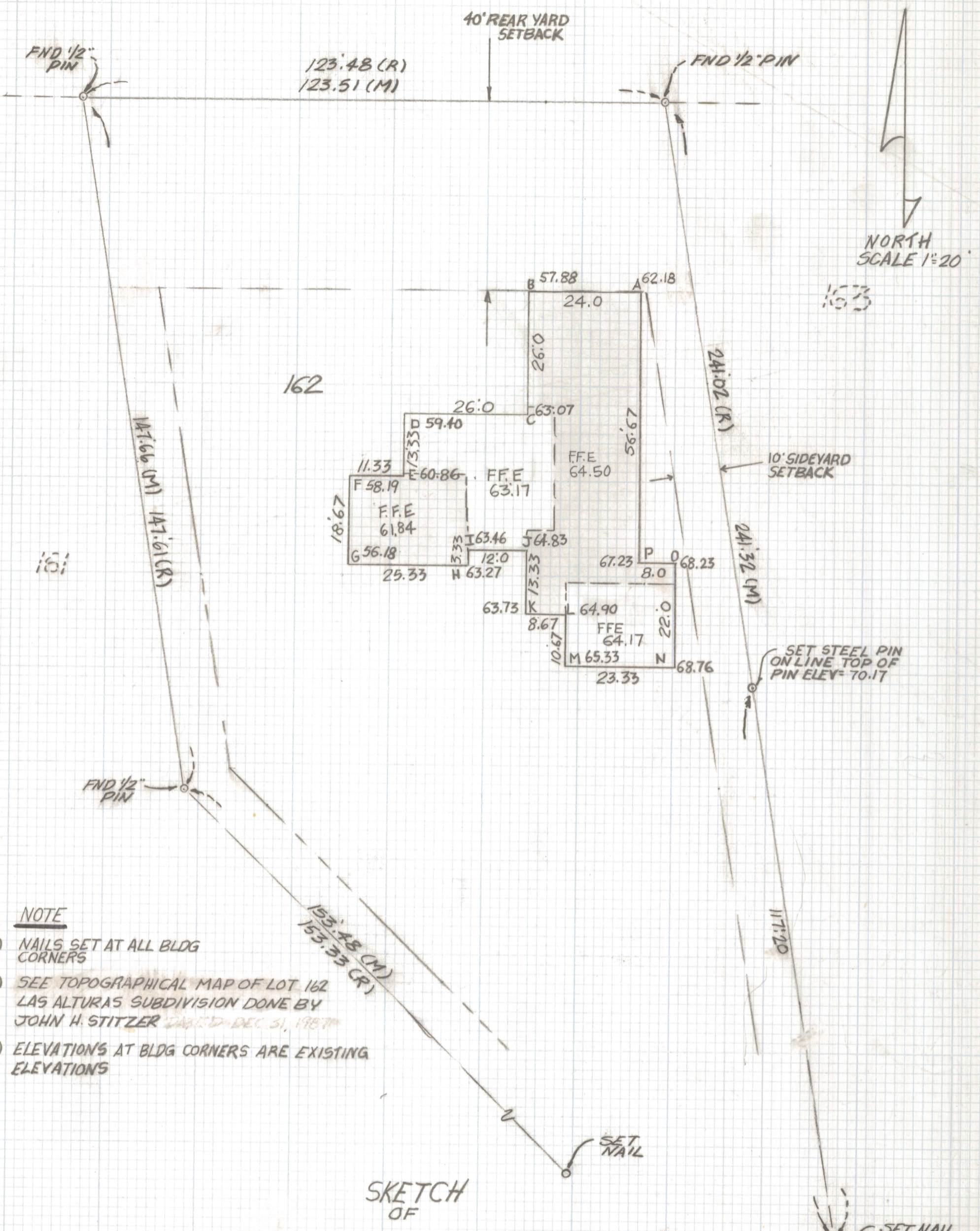


DISCLAIMER:

This unrecorded Record of Survey was donated to the City of Tucson. The City of Tucson provides this data for your personal use "as is." Additionally, the City of Tucson provides this information with the understanding that it is not guaranteed to be accurate, correct or complete and conclusions drawn from such information are the responsibility of the user.



NORTH
SCALE 1"=20'

NOTE

- (1) NAILS SET AT ALL BLDG CORNERS
- (2) SEE TOPOGRAPHICAL MAP OF LOT 162 LAS ALTURAS SUBDIVISION DONE BY JOHN H. STITZER DATED DEC 31, 1987
- (3) ELEVATIONS AT BLDG CORNERS ARE EXISTING ELEVATIONS

SKETCH
OF

BUILDING LAYOUT AND EXISTING ELEVATIONS AT BUILDING CORNERS ON LOT 162 LAS ALTURAS SUBDIVISION RECORDED IN BOOK 30 OF MAPS AND PLATS AT PAGE 19 IN THE OFFICE OF THE PIMA COUNTY, RECORDER PIMA COUNTY, ARIZONA



ROBERT F. MELLEN
REGISTERED LAND SURVEYOR
TUCSON, ARIZONA
JOB# 88-5