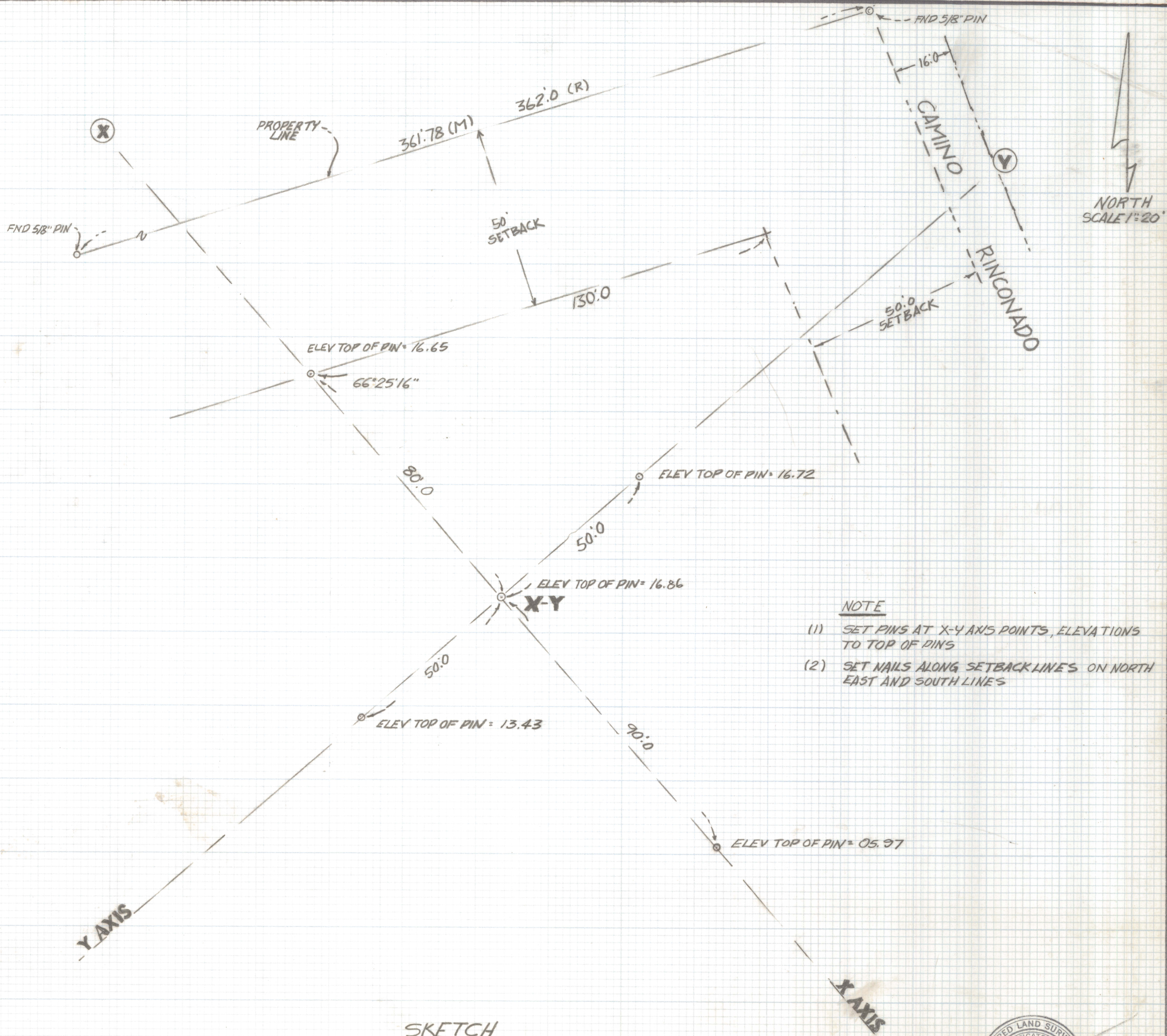


DISCLAIMER:

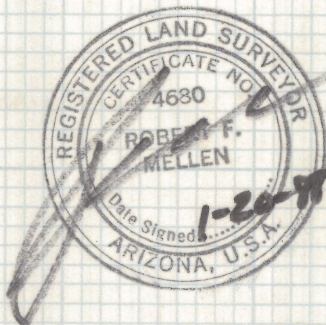
This unrecorded Record of Survey was donated to the City of Tucson. The City of Tucson provides this data for your personal use "as is." Additionally, the City of Tucson provides this information with the understanding that it is not guaranteed to be accurate, correct or complete and conclusions drawn from such information are the responsibility of the user.



- NOTE
- (1) SET PINS AT X-Y AXIS POINTS, ELEVATIONS TO TOP OF PINS
 - (2) SET NAILS ALONG SETBACK LINES ON NORTH EAST AND SOUTH LINES

SKETCH OF

STAKING OF X-Y AXIS WITH OFFSET ON LOT 24
 REDINGTON RANCH RECORDED IN BOOK 35 OF MAPS AND
 PLATS AT PAGE 43 IN THE OFFICE OF THE PIMA COUNTY
 RECORDER PIMA COUNTY, ARIZONA



ROBERT F. MELLEN
 REGISTERED LAND SURVEYOR
 TUCSON ARIZONA
 JOB# 88-7