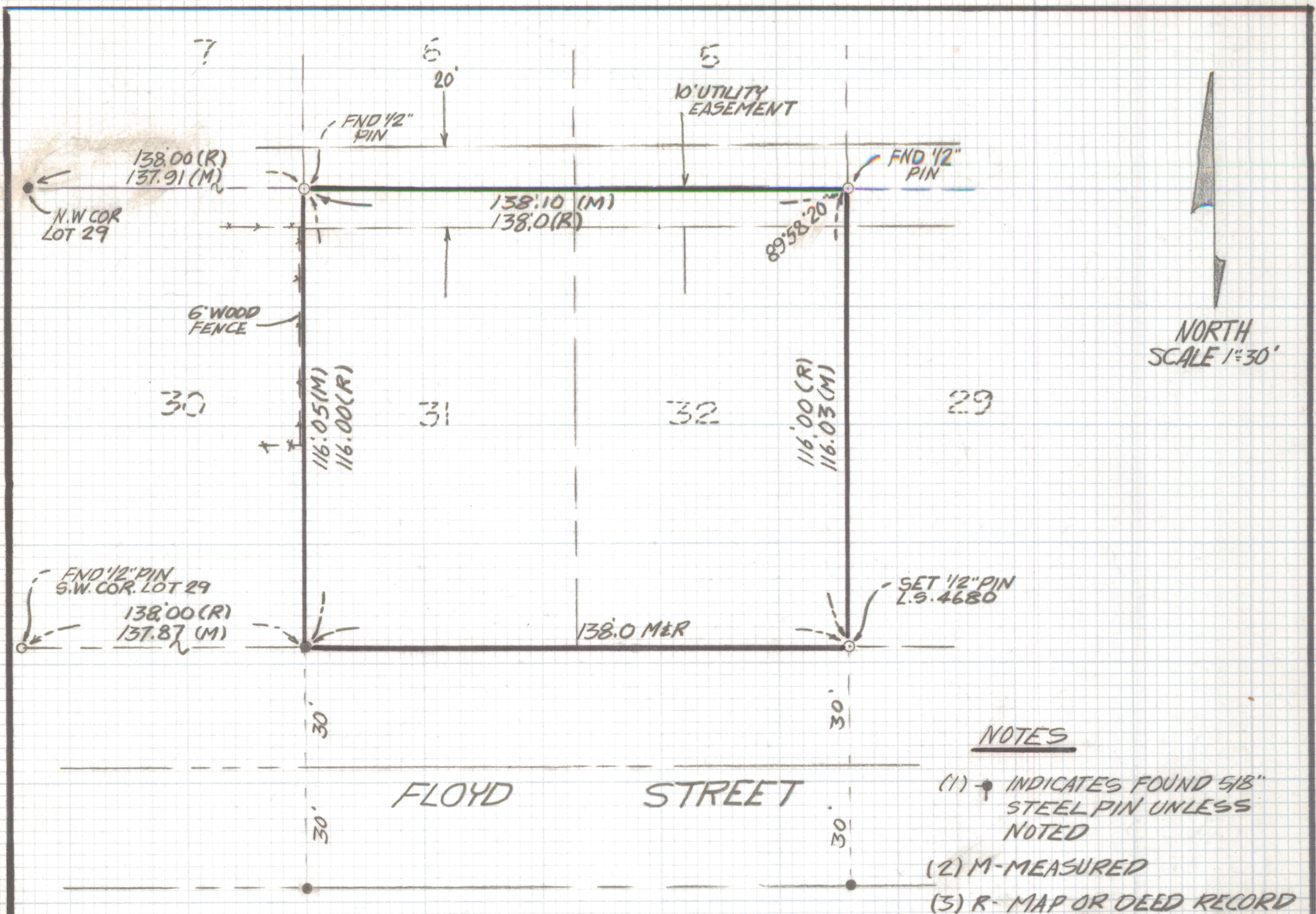


DISCLAIMER:

This unrecorded Record of Survey was donated to the City of Tucson. The City of Tucson provides this data for your personal use "as is." Additionally, the City of Tucson provides this information with the understanding that it is not guaranteed to be accurate, correct or complete and conclusions drawn from such information are the responsibility of the user.



NOTES

- (1) ● INDICATES FOUND 5/8" STEEL PIN UNLESS NOTED
- (2) M - MEASURED
- (3) R - MAP OR DEED RECORD



RESULTS OF SURVEY

OF LOTS 31 AND 32 BLOCK 9 MILLSTONE MANOR NO 6 RECORDED IN BOOK 11 OF MAPS AND PLATS AT PAGE 82 IN THE OFFICE OF THE PIMA COUNTY RECORDER PIMA COUNTY, ARIZONA

ROBERT F. MELLEN
REGISTERED LAND SURVEYOR
TUCSON, ARIZONA
JOB# 88-21