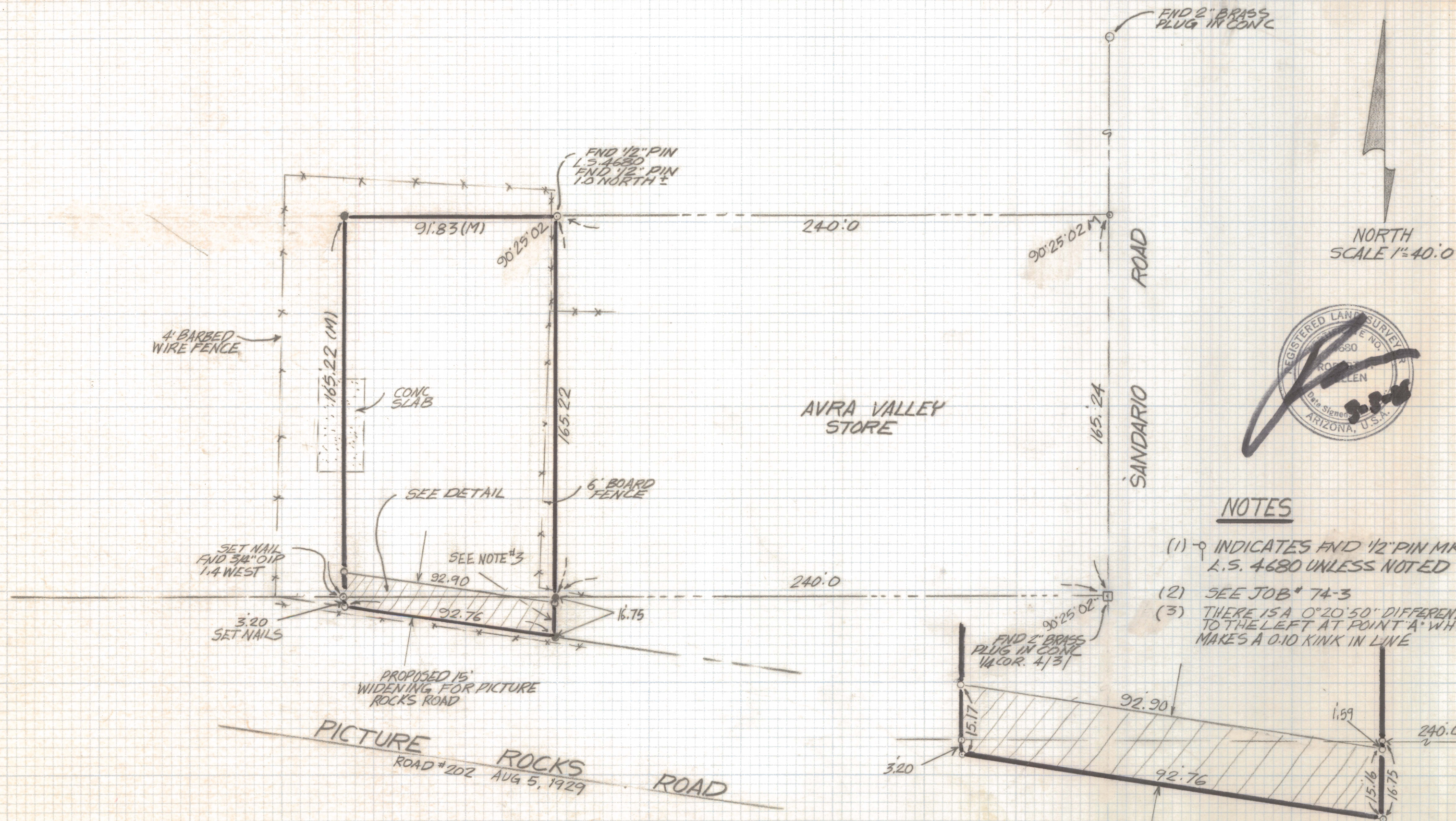


# **DISCLAIMER:**

**This unrecorded Record of Survey was donated to the City of Tucson. The City of Tucson provides this data for your personal use "as is." Additionally, the City of Tucson provides this information with the understanding that it is not guaranteed to be accurate, correct or complete and conclusions drawn from such information are the responsibility of the user.**





### NOTES

- (1) INDICATES FND 1/2" PIN MKD L.S. 4680 UNLESS NOTED
- (2) SEE JOB # 74-3
- (3) THERE IS A 0°20'50" DIFFERENT ANGLE TO THE LEFT AT POINT 'A' WHICH MAKES A 0.10 KINK IN LINE

### RESULTS OF SURVEY

OF THE SOUTHEAST QUARTER, SOUTHEAST QUARTER, NORTHEAST QUARTER AND THE NORTHEAST QUARTER, NORTHEAST QUARTER, SOUTHEAST QUARTER OF SECTION 4, TOWNSHIP 13 SOUTH RANGE 11 EAST, LYING NORTH OF PICTURE ROCKS ROAD, EXCEPT THE EAST 240.0 FEET THEREOF, ALL IN PIMA COUNTY

ROBERT F. MELLEN  
REGISTERED LAND SURVEYOR  
TUCSON, ARIZONA  
JOB #88-27

Z-2020-764