

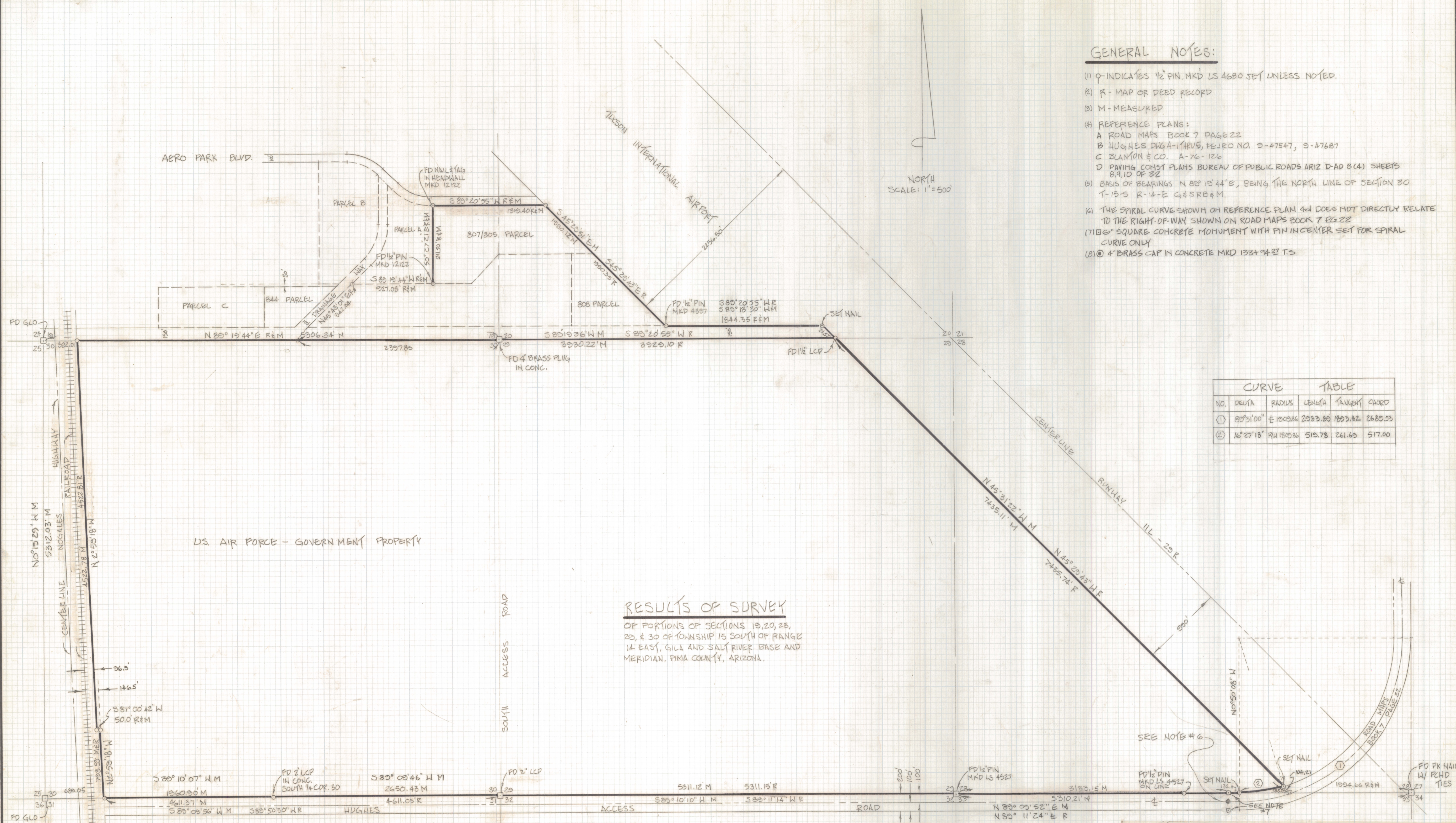
# **DISCLAIMER:**

**This unrecorded Record of Survey was donated to the City of Tucson. The City of Tucson provides this data for your personal use "as is." Additionally, the City of Tucson provides this information with the understanding that it is not guaranteed to be accurate, correct or complete and conclusions drawn from such information are the responsibility of the user.**

**GENERAL NOTES:**

- (1) Q INDICATES 1/2" PIN MKD LS 4680 SET UNLESS NOTED.
- (2) R - MAP OR DEED RECORD
- (3) M - MEASURED
- (4) REFERENCE PLANS:  
 A ROAD MAPS BOOK 7 PAGE 22  
 B HUGHES DWG A-MARUS, PEJRO NO. 9-47547, 9-47687  
 C BLANTON & CO. A-76-126  
 D PAVING CONST PLANS BUREAU OF PUBLIC ROADS ARIZ D-AD 8(4) SHEETS 8,9,10 OF 32
- (5) BASIS OF BEARINGS N 89° 15' 44" E, BEING THE NORTH LINE OF SECTION 30 T-15-S R-14-E G&SRB#M.
- (6) THE SPIRAL CURVE SHOWN ON REFERENCE PLAN 4d DOES NOT DIRECTLY RELATE TO THE RIGHT-OF-WAY SHOWN ON ROAD MAPS BOOK 7 PG 22
- (7) 10" SQUARE CONCRETE MONUMENT WITH PIN IN CENTER SET FOR SPIRAL CURVE ONLY
- (8) 4" BRASS CAP IN CONCRETE MKD 1337 94 27 T.S.

NORTH  
SCALE: 1"=500'



CURVE TABLE					
NO.	DELTA	RADIUS	LENGTH	CHORD	
①	89° 31' 00"	E 1003.84	2983.86	1893.62	2688.53
②	16° 27' 18"	R 1820.84	519.78	261.69	517.00

**RESULTS OF SURVEY**

OF PORTIONS OF SECTIONS 19, 20, 28, 29, & 30 OF TOWNSHIP 15 SOUTH OF RANGE 14 EAST, GILA AND SALT RIVER BASE AND MERIDIAN, PIMA COUNTY, ARIZONA.

	FOR HUGHES AIRCRAFT COMPANY	
	<b>ROBERT P. MELLEN</b> REGISTERED LAND SURVEYOR 1250 W MOHAVE ST TUCSON, ARIZONA 05705 (602) 888-1012	
DRAWN BY: GWM JOB NO: 88-28	CR BY:	DATE: SHEET 1 OF 1