

# **DISCLAIMER:**

**This unrecorded Record of Survey was donated to the City of Tucson. The City of Tucson provides this data for your personal use "as is." Additionally, the City of Tucson provides this information with the understanding that it is not guaranteed to be accurate, correct or complete and conclusions drawn from such information are the responsibility of the user.**

NEAL AVE

FND 5/8" PIN  
NORTH 1/4 COR  
SEC 31

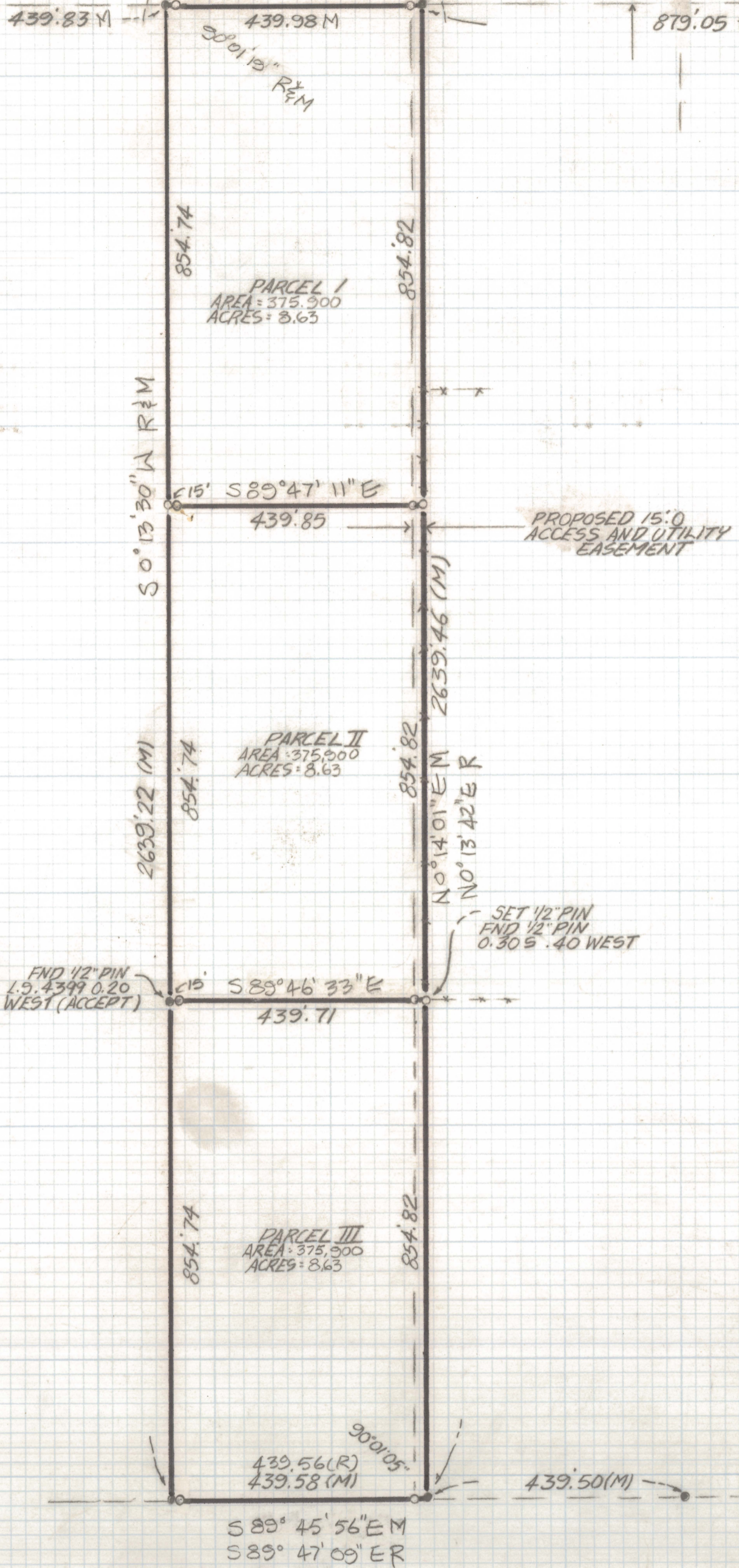
BOPP ROAD  
2638.25

75.0 N 89° 47' 49" W R & M

FND NAIL NORTHEAST  
CORNER SECTION 31

30/29  
31/32

NORTH  
SCALE 1" = 200'



NOTES

- (1) ♀ INDICATES SET 1/2" PIN MKD L.S. 4680 UNLESS NOTED
- (2) SEE JOB # 79-32
- (3) ♀ INDICATES FOUND 1/2" PIN MKD L.S. 4399
- (4) BASIS OF BEARINGS NORTH LINE OF SECTION 31,  
DOC. 5889 PG 897
- (5) M - MEASURED
- (6) R - MAP OR DEED RECORD
- (7) AREA OF PARCEL ONE DOES NOT INCLUDE BOPP ROAD

RESULTS OF SURVEY

OF A PORTION OF THE NORTHEAST QUARTER OF SECTION THIRTY-ONE, TOWNSHIP  
FOURTEEN SOUTH, RANGE TWELVE EAST, GILA AND SALT RIVER BASE AND MERIDIAN  
PIMA COUNTY, ARIZONA



ROBERT F. MELLEN  
REGISTERED LAND SURVEYOR  
TUCSON, ARIZONA  
JOB # 88-31