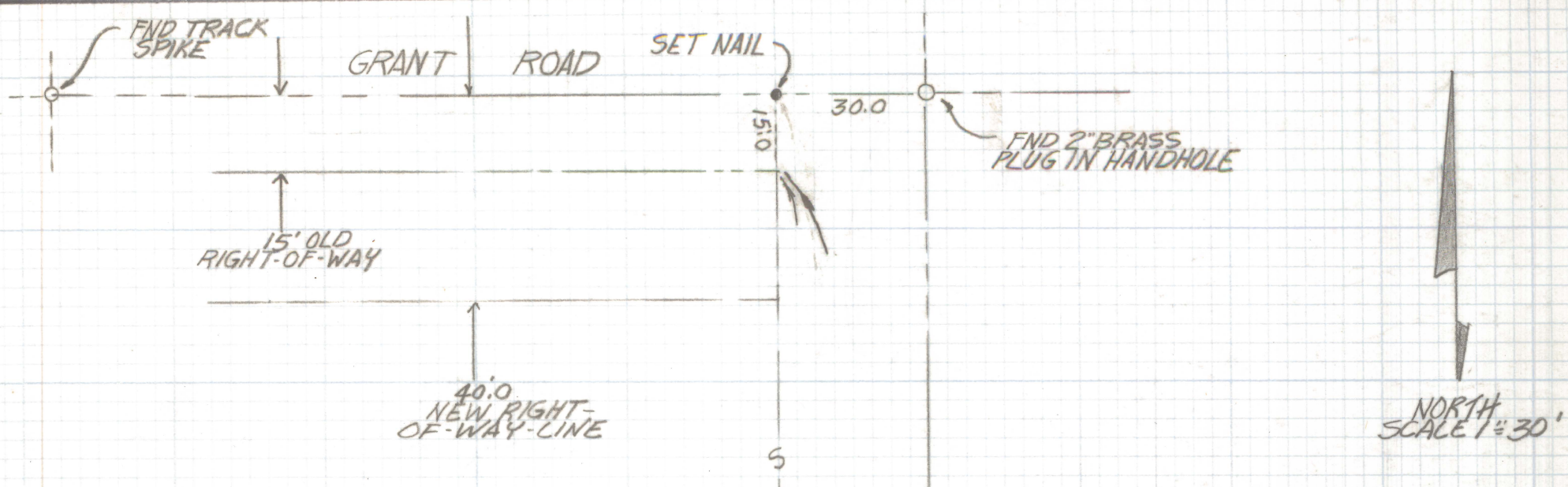


DISCLAIMER:

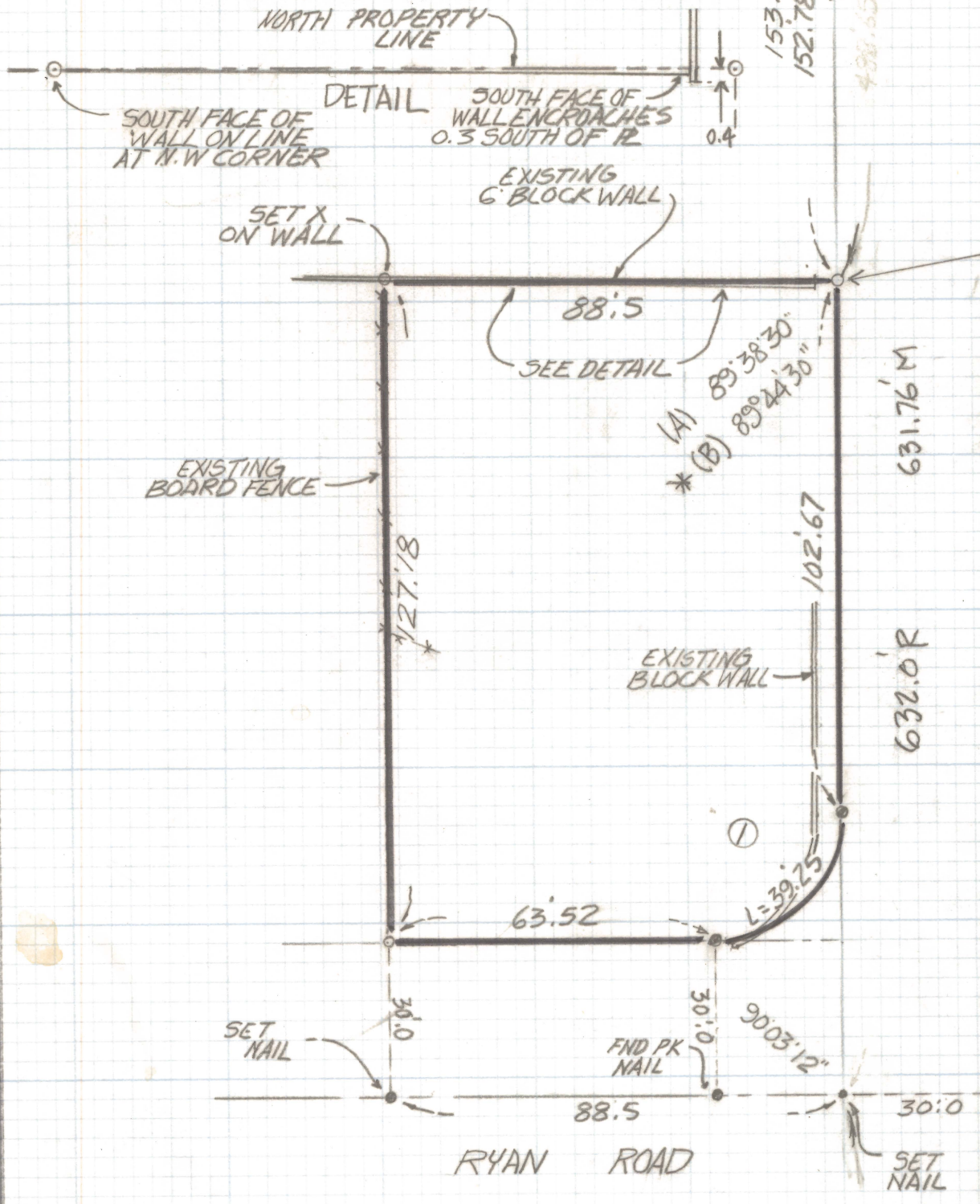
This unrecorded Record of Survey was donated to the City of Tucson. The City of Tucson provides this data for your personal use "as is." Additionally, the City of Tucson provides this information with the understanding that it is not guaranteed to be accurate, correct or complete and conclusions drawn from such information are the responsibility of the user.



NORTH
SCALE 1"=30'

* NOTE:
DOCKET BOOK 3472 PAGE 200
CONFLICTS WITH DOCKET BOOK 7202
PAGE 327 BY APPROXIMATELY
0.15 FEET - SEE ANGLES (A) & (B)

CURVE DATA					
NO	RADIUS	DELTA	TANGENT	LENGTH	CHORD
1	25.0	89°56'48"	24.98	39.25	35.34



SET 1/2" PIN
FND 1/2" PIN MKD
L.S. 15316 0.25 NORTH

- NOTES
- (1) - INDICATES SET 1/2" PIN MKD L.S. 4680 UNLESS NOTED
 - (2) - FND 1/2" PIN MKD L.S. 19316 UNLESS NOTED
 - (3) - R - MAP OR DEED RECORD
 - (4) - M - MEASURED



RESULTS OF SURVEY

OF A PORTION OF LOT BLOCK 1 PALO VERDE #2 AMENDED RECORDED IN BOOK 3 OF MAPS AND PLATS AT PAGE 129 IN THE OFFICE OF THE PIMA COUNTY, RECORDER PIMA COUNTY, ARIZONA

ROBERT F. MELLEN
REGISTERED LAND SURVEYOR
TUCSON, ARIZONA
JOB # 88-47