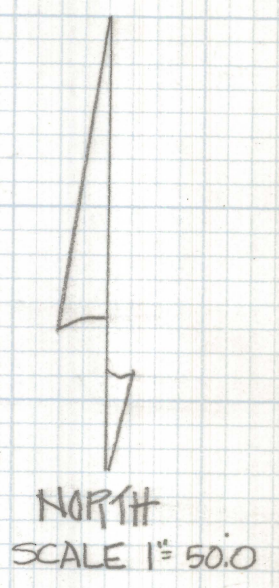
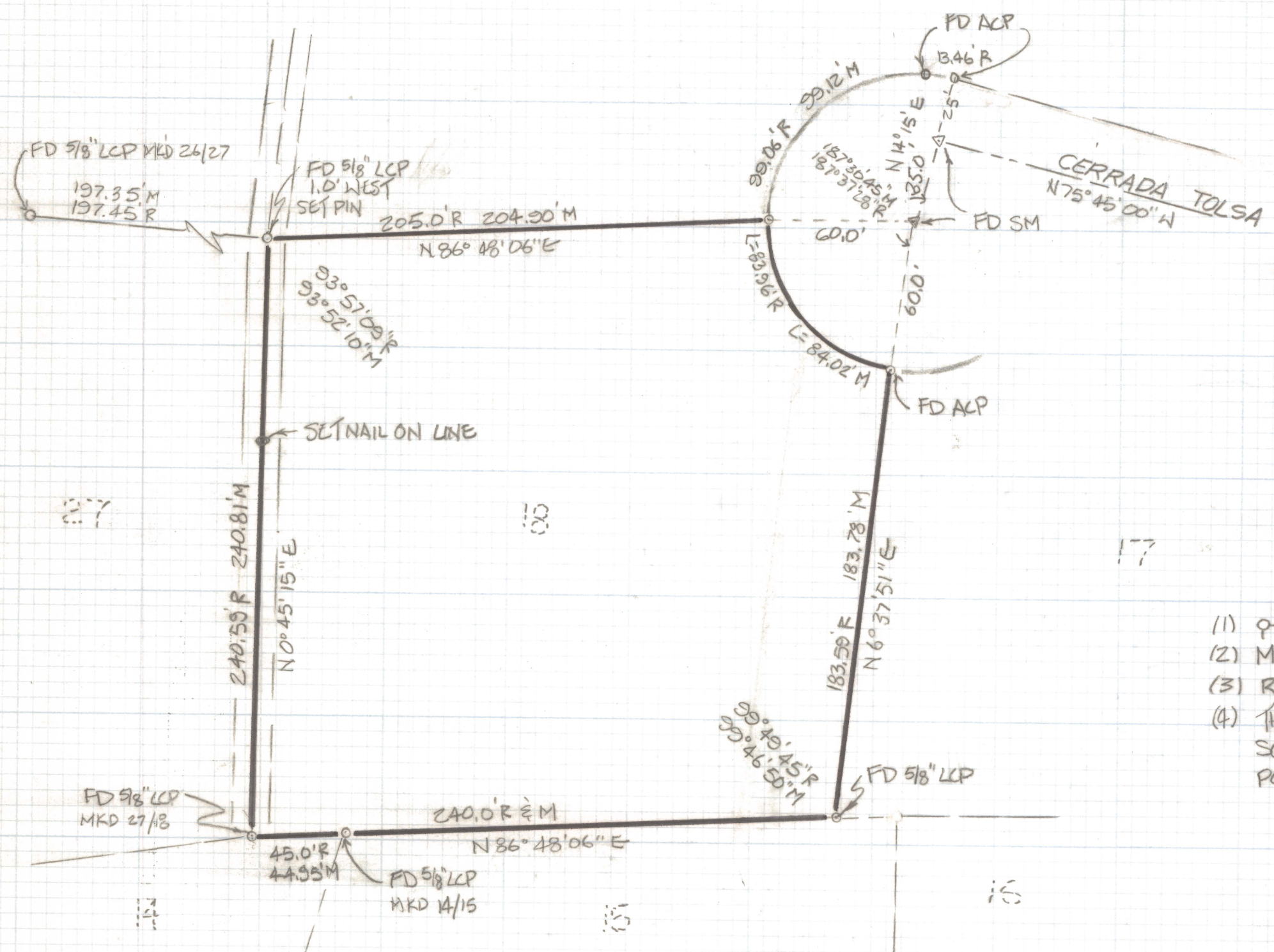


DISCLAIMER:

This unrecorded Record of Survey was donated to the City of Tucson. The City of Tucson provides this data for your personal use "as is." Additionally, the City of Tucson provides this information with the understanding that it is not guaranteed to be accurate, correct or complete and conclusions drawn from such information are the responsibility of the user.



- NOTES
- (1) ♀ INDICATES SET 1/2" PIN MKD L.S 4680 UNLESS NOTED
 - (2) M- MEASURED
 - (3) R- MAP OR DEED RECORD
 - (4) THERE ARE UTILITIES LOCATED ALONG THE SOUTH LINE OF THIS LOT, WHICH INDICATES A POSSIBLE EASEMENT

RESULTS OF SURVEY

OF LOT 18 CATALINA FOOTHILLS ESTATES N°6 RECORDED IN BOOK 16 OF MAPS AND PLATS AT PAGE 36 IN THE OFFICE OF THE PIMA COUNTY RECORDER, PIMA COUNTY, ARIZONA.



ROBERT F. MELLEN
 REGISTERED LAND SURVEYOR
 TUCSON, ARIZONA
 JOB# 88-53