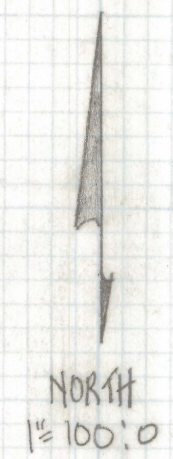
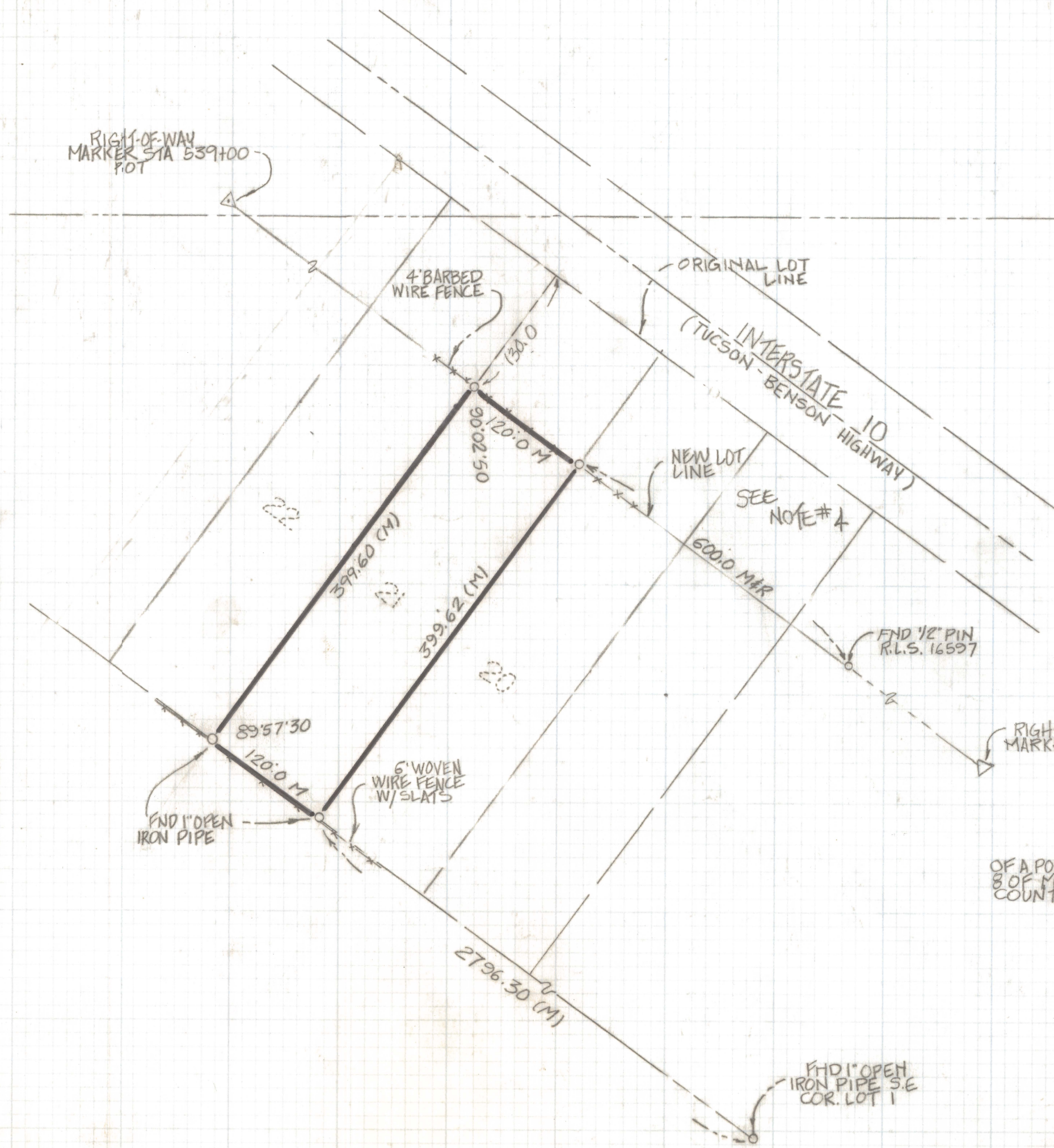


DISCLAIMER:

This unrecorded Record of Survey was donated to the City of Tucson. The City of Tucson provides this data for your personal use "as is." Additionally, the City of Tucson provides this information with the understanding that it is not guaranteed to be accurate, correct or complete and conclusions drawn from such information are the responsibility of the user.

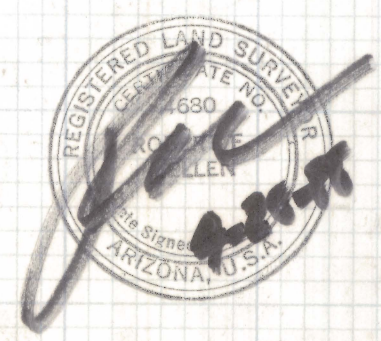


NOTES

- (1) \circ INDICATES SET 1/2" PIN MKD L.S. 4680 UNLESS NOTED
- (2) M- MEASURED
- (3) R- MAP OR DEED RECORD
- (4) DOCKET BOOK 7283 PAGE 267 DOES NOT INDICATE THAT A PORTION OF THIS LOT WAS TAKEN FOR INTERSTATE 10.

RESULTS OF SURVEY

OF A PORTION OF LOT 21 OF ROSS ACRES RECORDED IN BOOK 8 OF MAPS AND PLATS AT PAGE 65, IN THE OFFICE OF THE PIMA COUNTY RECORDER PIMA COUNTY, ARIZONA



ROBERT F. MELLEN
 REGISTERED LAND SURVEYOR
 TUCSON, ARIZONA
 JOB# 88-55

Z-2020-783