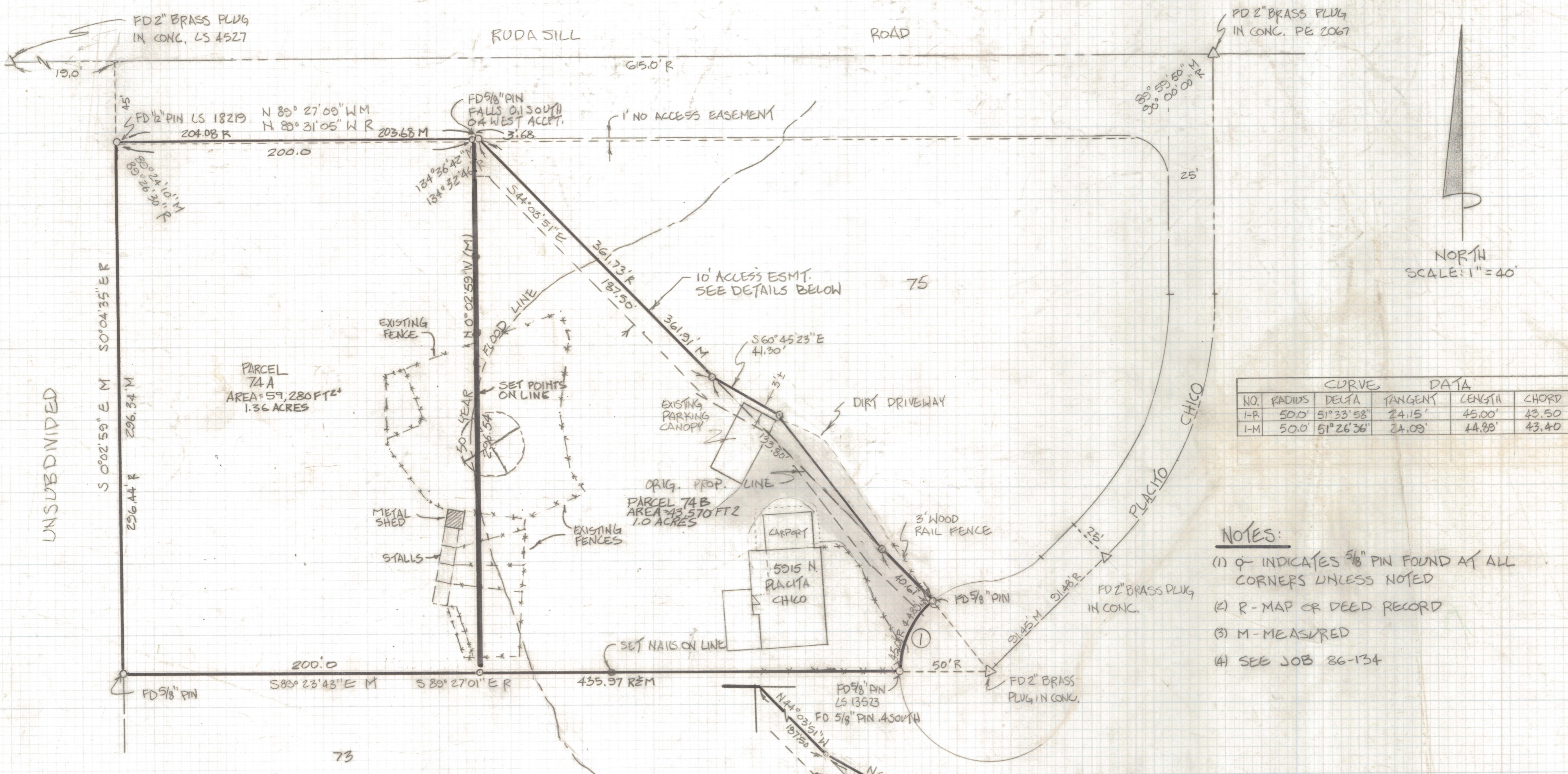


DISCLAIMER:

This unrecorded Record of Survey was donated to the City of Tucson. The City of Tucson provides this data for your personal use "as is." Additionally, the City of Tucson provides this information with the understanding that it is not guaranteed to be accurate, correct or complete and conclusions drawn from such information are the responsibility of the user.



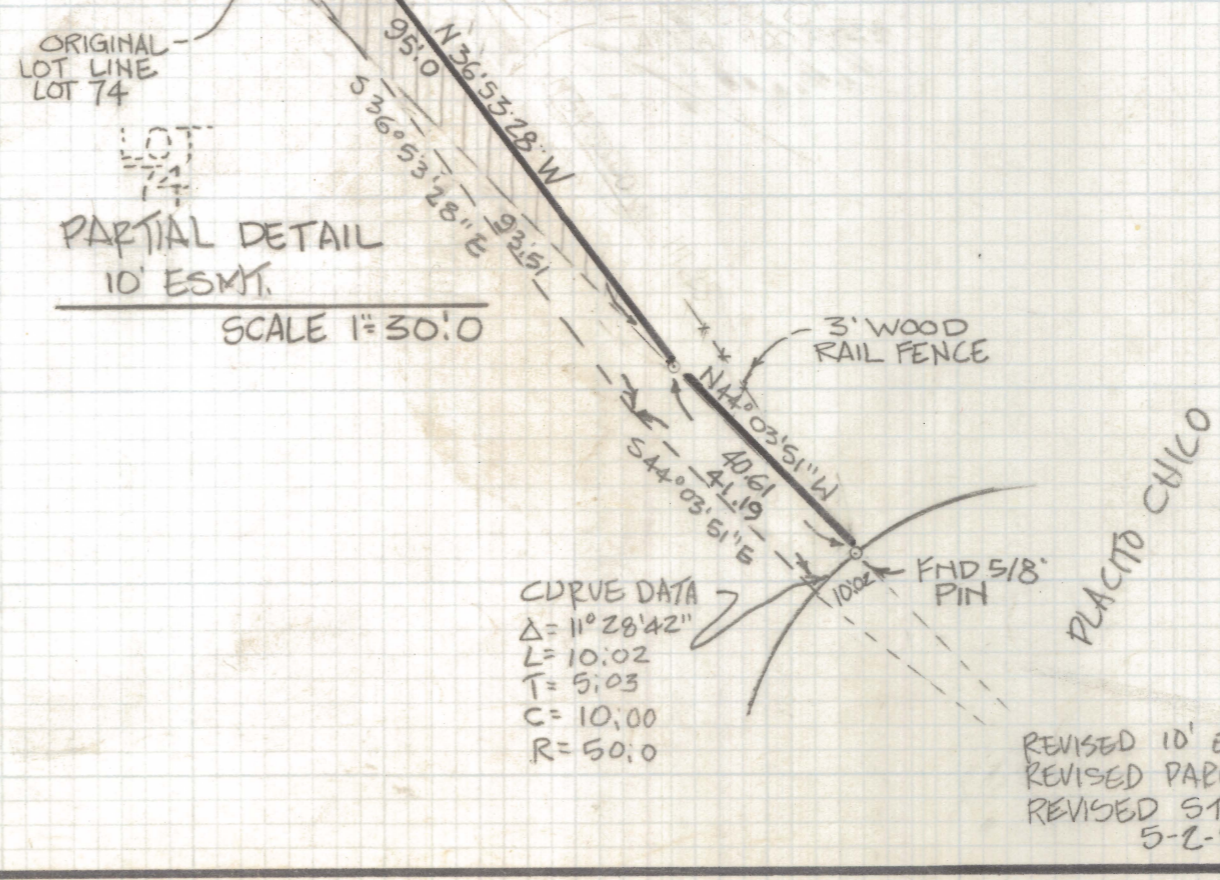
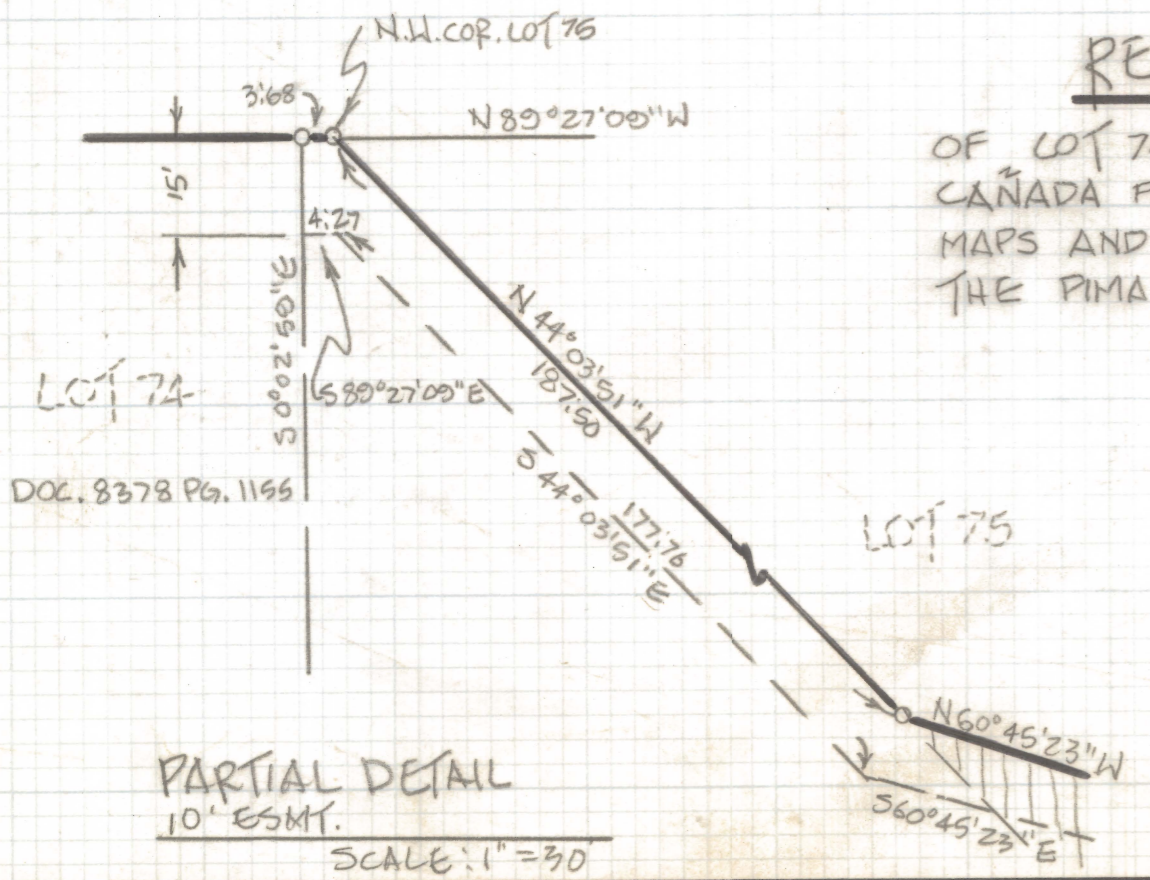
CURVE DATA					
NO.	RADIUS	DELTA	TANGENT	LENGTH	CHORD
I-R	50.0'	51°33'58"	24.15'	45.00'	43.50'
I-M	50.0'	51°26'36"	24.09'	44.88'	43.40'

NOTES:

- (1) ♀ INDICATES 5/8" PIN FOUND AT ALL CORNERS UNLESS NOTED
- (2) R-MAP OR DEED RECORD
- (3) M-MEASURED
- (4) SEE JOB 86-134

RESULTS OF SURVEY

OF LOT 74 AND A PORTION OF LOT 75 IN LA CANADA FOOTHILLS AS RECORDED IN BOOK 24 OF MAPS AND PLATS AT PAGE 73 IN THE OFFICE OF THE PIMA COUNTY RECORDER, PIMA COUNTY, ARIZONA.



CURVE DATA

Δ	11°28'42"
L	10.02
T	5.03
C	10.00
R	50.0



ROBERT F. MULLEN
 REGISTERED LAND SURVEYOR OF
 TUCSON, ARIZONA
 JOB 86-53