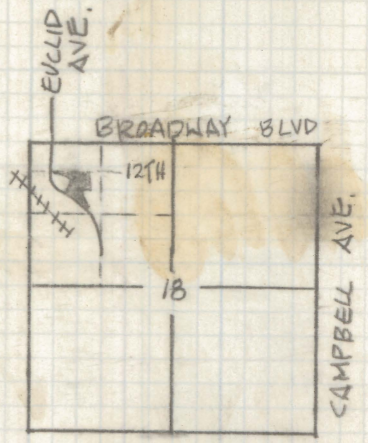
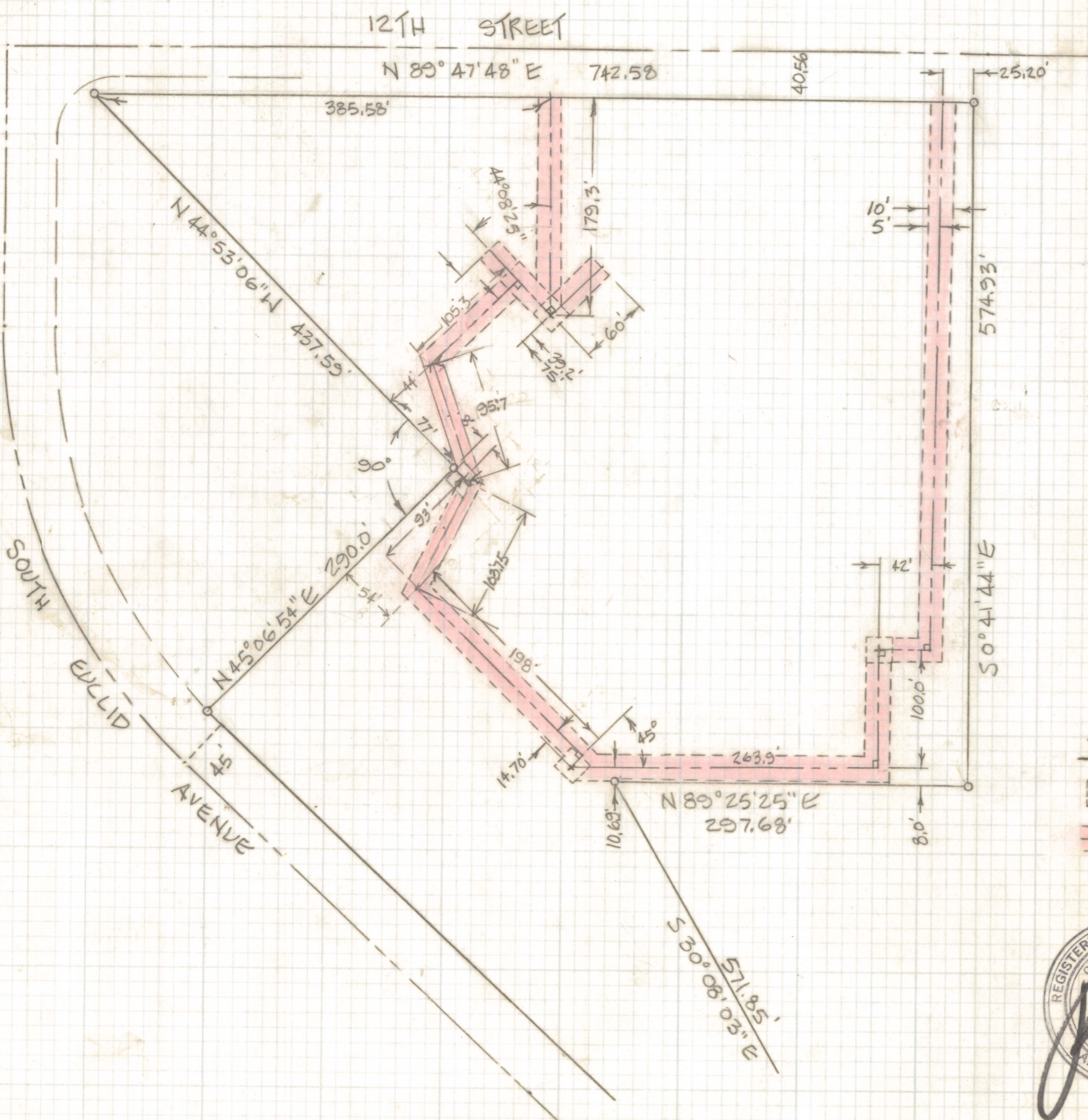


# **DISCLAIMER:**

**This unrecorded Record of Survey was donated to the City of Tucson. The City of Tucson provides this data for your personal use "as is." Additionally, the City of Tucson provides this information with the understanding that it is not guaranteed to be accurate, correct or complete and conclusions drawn from such information are the responsibility of the user.**





LOCATION PLAN  
 NOT TO SCALE

NORTH  
 SCALE: 1" = 100'

LEGAL DESCRIPTION OF EASEMENT

LOCATED IN A PORTION OF SECTION 18,  
 TOWNSHIP 14 SOUTH, RANGE 14 EAST,  
 GILA AND SALT RIVER BASE AND MERIDIAN,  
 PIMA COUNTY, ARIZONA.

NOTES

- [+ ] 15' X 15' TRANSFORMER ESMT.
- 10' U.G. ELECTRIC ESMT.

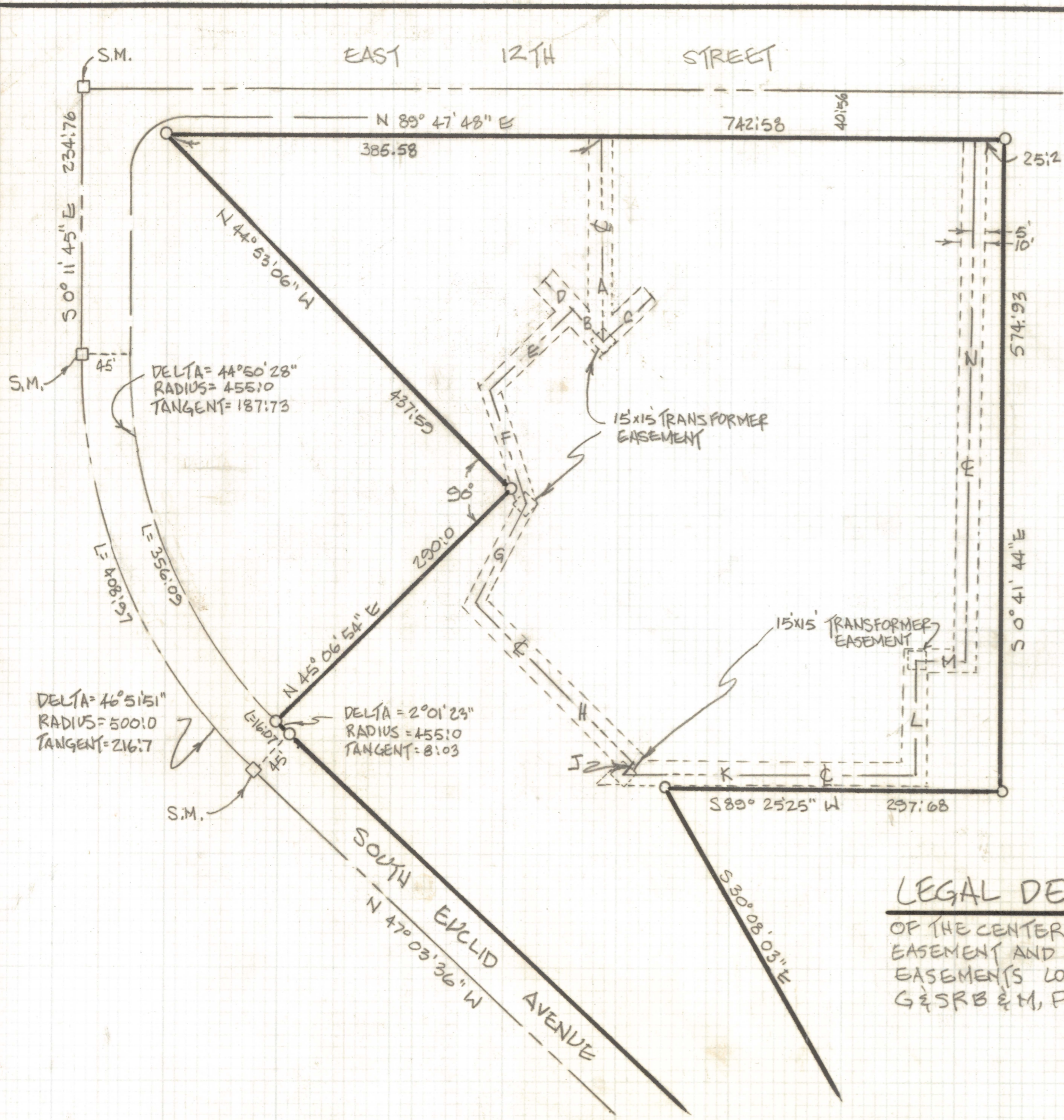


ROBERT F. MELLEN  
 REGISTERED LAND SURVEYOR  
 TUCSON, ARIZONA  
 JOB 88-63

REVISED DRAWING 8/29/88

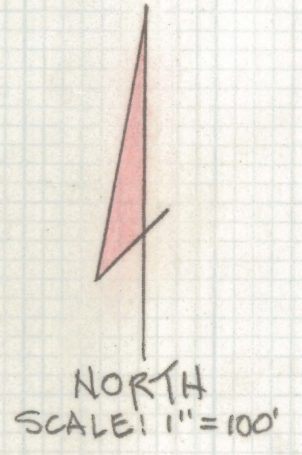
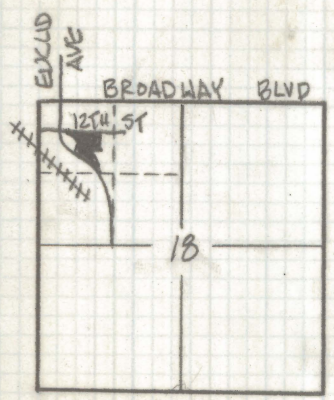
Z-2020-789-001





**LINE TABLE**

LINE	BEARING	DISTANCE
A	S 0° 44' 41" E	179.13
B	N 44° 53' 06" W	39.2
C	N 45° 06' 54" E	60.0
D	N 44° 53' 06" W	35.8
E	S 45° 06' 54" W	105.3
F	S 17° 31' 00" E	95.7
G	S 18° 47' 50" W	103.75
H	S 44° 53' 06" E	198.10
J	S 45° 06' 54" W	14.7
K	S 89° 53' 06" E	263.9
L	N 0° 06' 54" E	100.0
M	S 89° 53' 06" E	42.0
N	N 0° 06' 54" E	467.75



**LEGAL DESCRIPTION**

OF THE CENTERLINE OF A 10 FOOT ELECTRIC EASEMENT AND A 15 BY 15 FOOT TRANSFORMER EASEMENTS LOCATED IN SECTION 18, T14S, R14E, G&SRB & M, PIMA COUNTY, ARIZONA



ROBERT F. MELLEN  
REGISTERED LAND SURVEYOR  
TUCSON, ARIZONA  
JOB 88-63