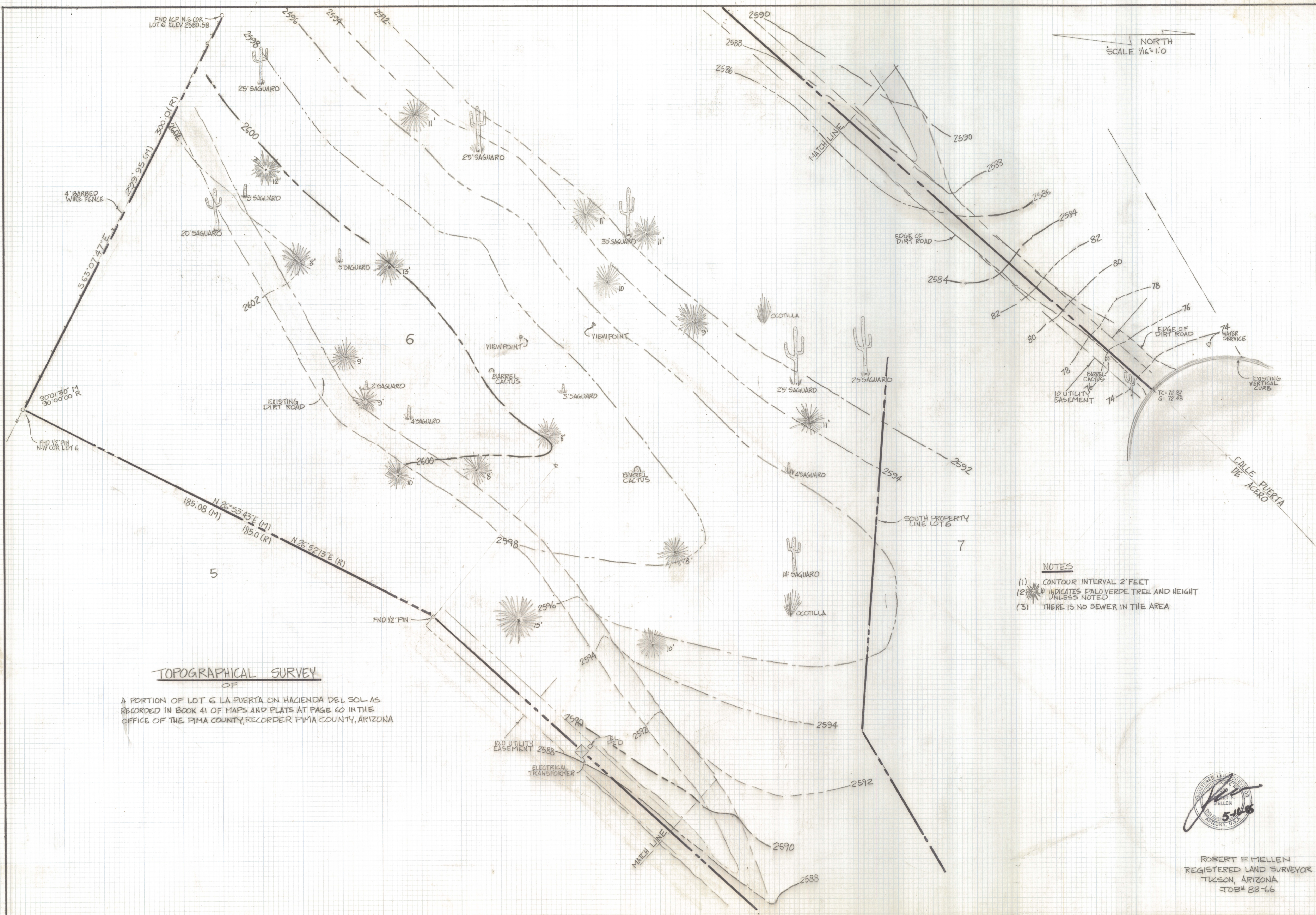


# **DISCLAIMER:**

**This unrecorded Record of Survey was donated to the City of Tucson. The City of Tucson provides this data for your personal use "as is." Additionally, the City of Tucson provides this information with the understanding that it is not guaranteed to be accurate, correct or complete and conclusions drawn from such information are the responsibility of the user.**

NORTH  
SCALE 1/16" = 1'-0"



- NOTES**
- (1) CONTOUR INTERVAL 2' FEET
  - (2) \* INDICATES PALO VERDE TREE AND HEIGHT UNLESS NOTED
  - (3) THERE IS NO SEWER IN THE AREA

**TOPOGRAPHICAL SURVEY**  
OF  
A PORTION OF LOT 6 LA PUERTA ON HACIENDA DEL SOL AS  
RECORDED IN BOOK 41 OF MAPS AND PLATS AT PAGE 60 IN THE  
OFFICE OF THE PIMA COUNTY RECORDER PIMA COUNTY, ARIZONA



ROBERT F. MELLEN  
REGISTERED LAND SURVEYOR  
TUCSON, ARIZONA  
JOB# 88-66