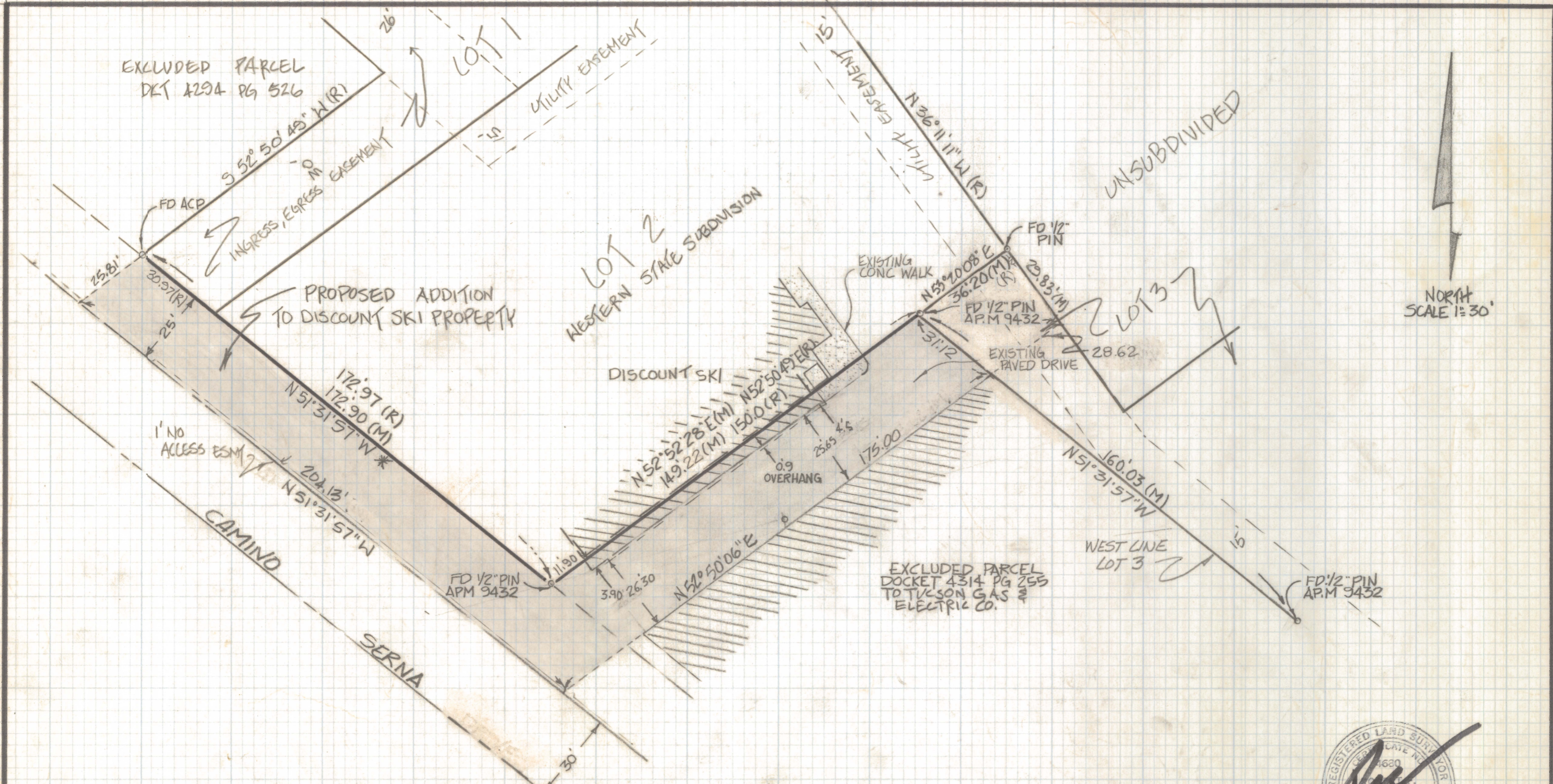


DISCLAIMER:

This unrecorded Record of Survey was donated to the City of Tucson. The City of Tucson provides this data for your personal use "as is." Additionally, the City of Tucson provides this information with the understanding that it is not guaranteed to be accurate, correct or complete and conclusions drawn from such information are the responsibility of the user.



RESULTS OF SURVEY

OF A PORTION OF LOT 2 AND A PORTION OF EXCLUDED PARCEL WESTERN
 STATE SUBDIVISION RECORDED IN BOOK 28 OF MAPS AND PLATS AT
 PAGE 28 IN THE OFFICE OF THE PIMA COUNTY RECORDER PIMA COUNTY
 ARIZONA



ROBERT F. MELLEN
 REGISTERED LAND SURVEYOR
 TUCSON, ARIZONA
 JOB # 88-79

REVISED MAP = LEGAL 12-17-90

Z-2020-801

STEVENS & COMPANY