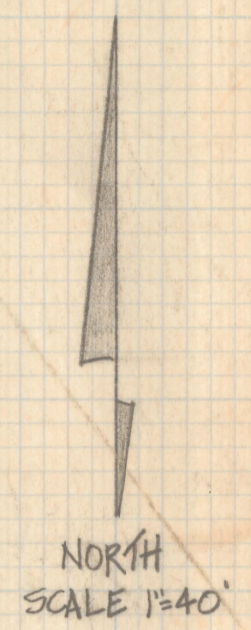
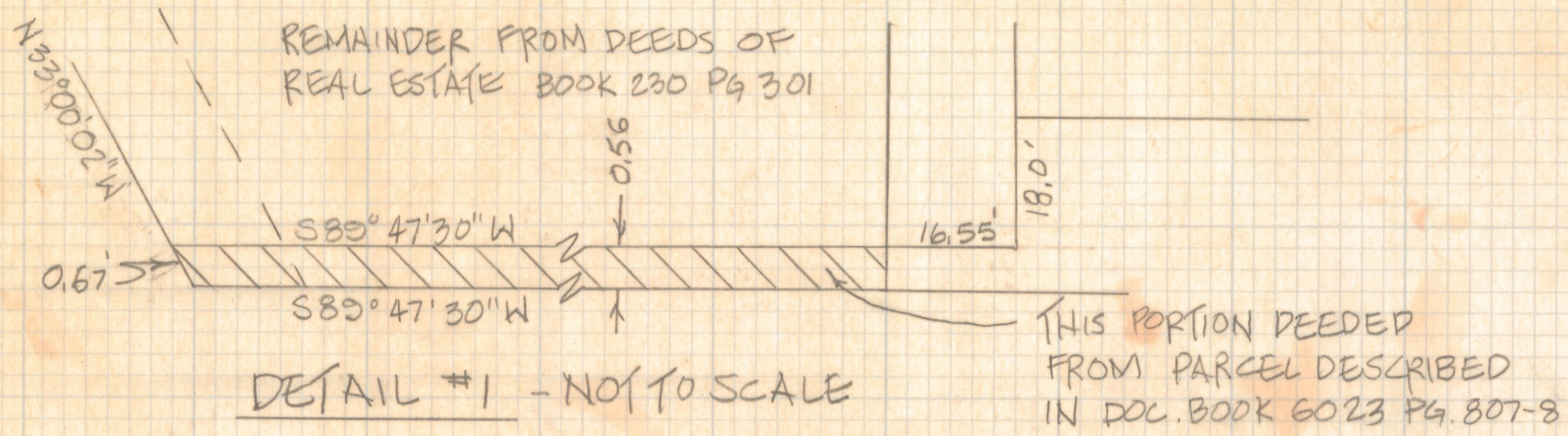
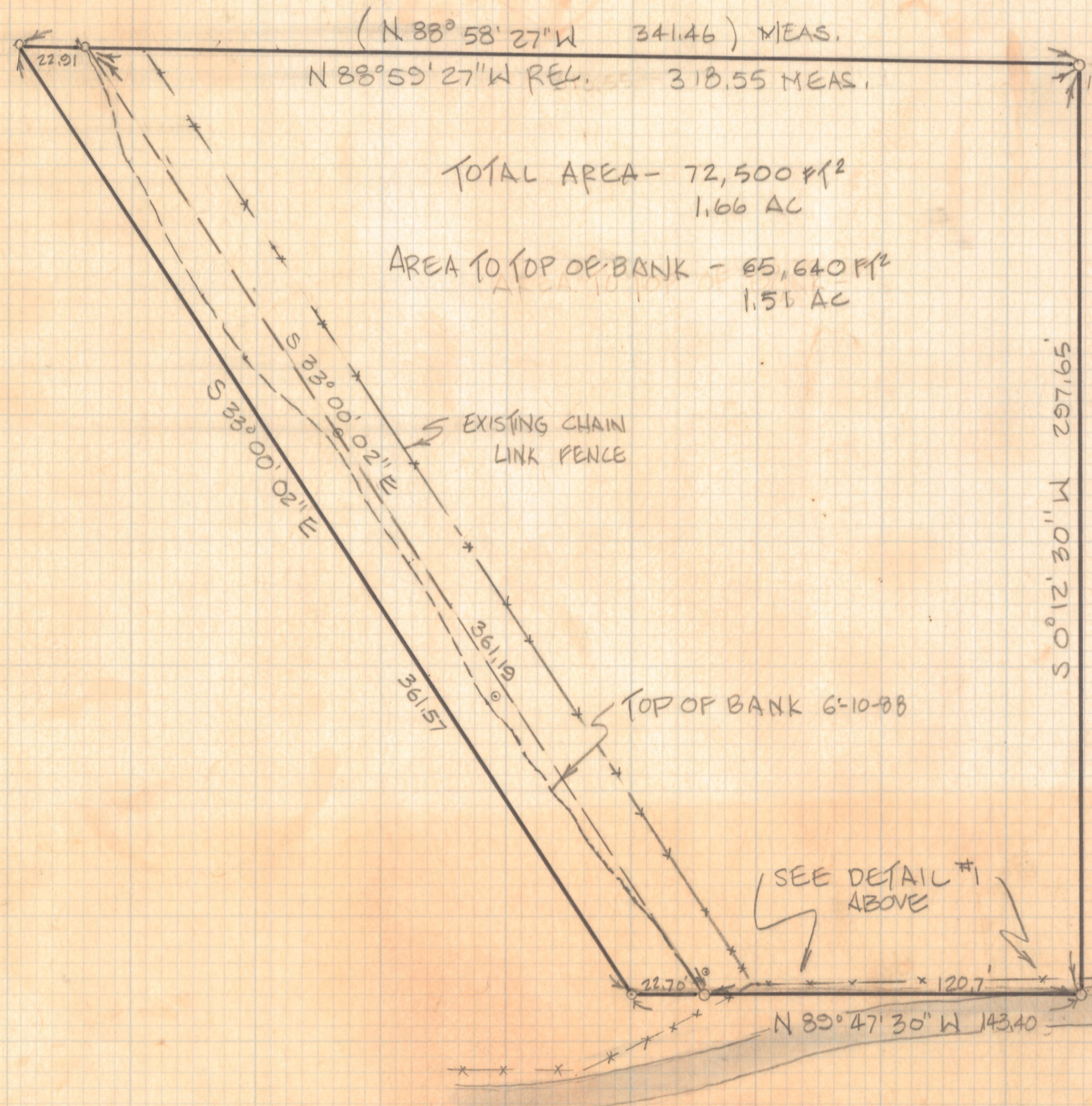


# **DISCLAIMER:**

**This unrecorded Record of Survey was donated to the City of Tucson. The City of Tucson provides this data for your personal use "as is." Additionally, the City of Tucson provides this information with the understanding that it is not guaranteed to be accurate, correct or complete and conclusions drawn from such information are the responsibility of the user.**



JULIAN WASH DIVERSION CHANNEL  
DOCKET BOOK 4372 PG 788



NOTES:

- (1) O INDICATES 1/2" STEEL PIN MKD LS 4680 UNLESS NOTED
- (2) SEE CITY OF TUCSON DRAWING #R-31-05 (EL FUENTE LANE)
- (3) THERE ARE MANY GAPS, OVERLAPS, AND AMBIGUOUS DEED CALLS IN THIS AREA
- (4) SEE JOB 83-72 (MELLEN)

SOUTHEAST COR.  
PARCEL - DRE.  
230 PG. 301  
506.0'

FD 1/2" STEEL PIN  
LS 4680  
N 89° 47' 30" W  
EXISTING PAVED ROAD  
EL FUENTE LANE  
(WIDTH VARIES - SEE MISC.  
RECORDS BOOK 79 PAGE 107)

RESULTS OF SURVEY

OF A PORTION OF THE NORTH HALF OF THE  
SOUTHEAST QUARTER OF SECTION 23, TOWNSHIP 14  
SOUTH OF RANGE 13 EAST, GILA AND SALT RIVER BASE  
AND MERIDIAN, PIMA COUNTY, ARIZONA.



ROBERT F. MELLEN  
REGISTERED LAND SURVEYOR  
TUCSON, ARIZONA  
JOB# 88-80