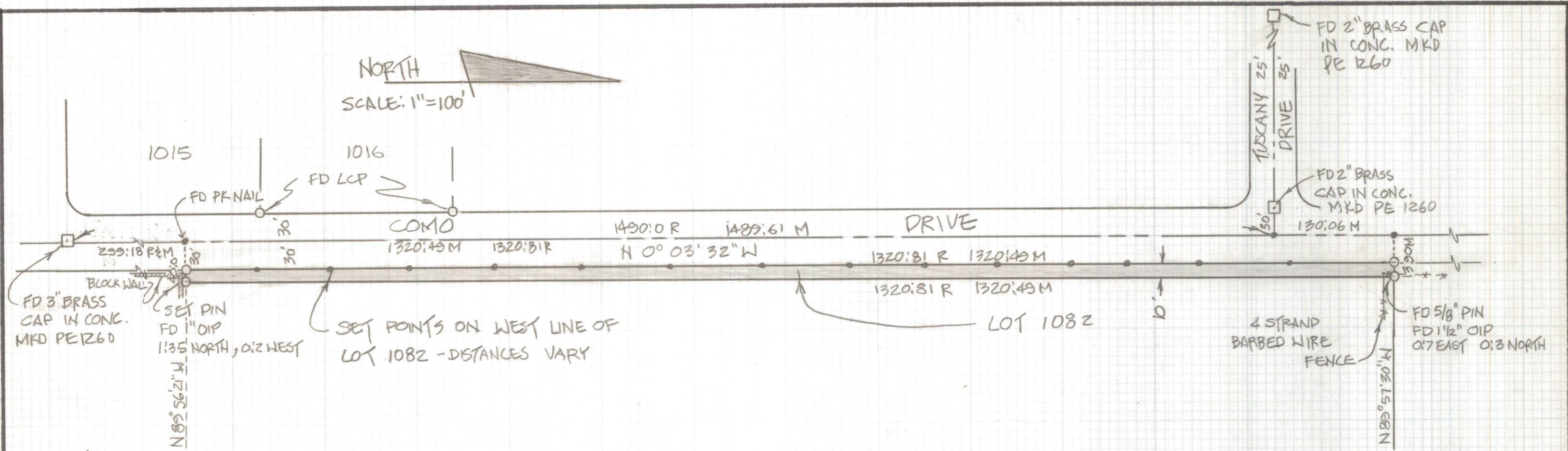


# **DISCLAIMER:**

**This unrecorded Record of Survey was donated to the City of Tucson. The City of Tucson provides this data for your personal use "as is." Additionally, the City of Tucson provides this information with the understanding that it is not guaranteed to be accurate, correct or complete and conclusions drawn from such information are the responsibility of the user.**



NOTES:

- (1) □ INDICATES 1/2" PIN MKD LS 4680 SET UNLESS NOTED
- (2) ○ INDICATES NAIL SET UNLESS NOTED
- (3) M - MEASURED
- (4) R - MAP OR PEED RECORD

RESULTS OF SURVEY

OF LOT 1082 OF THE TUCSON NATIONAL ESTATES AS RECORDED IN BOOK 18 OF MAPS AND PLATS AT PAGE 28 IN THE OFFICE OF THE PIMA COUNTY RECORDER, PIMA COUNTY, ARIZONA.



ROBERT P. MELLEN  
REGISTERED LAND SURVEYOR  
TUCSON, ARIZONA  
JOB 88-104